

A History of the USS Calvert - Research notes for the period January 1, 1963 to July 8, 1963

Year	Month	Day	Location / Movement	Historical Details	Sources, Notes
------	-------	-----	---------------------	--------------------	----------------

Introduction

This document includes chronologically ordered historical research notes for the period January 1, 1963 to July 8, 1963.

Chronological highlights for this period include:

- * San Diego, in port and underway, for upkeep and training exercises - January 1st to March 11th
 - * Family cruise - March 1st
- * Long Beach, California - March 12th to March 28th
- * San Diego - March 29th to April 8th
- * Seal Beach - April 9th to April 23rd
- * Drydocked, Terminal Island, San Pedro, CA - April 10th to April 23rd
- * National Steel Company Shipyard, San Diego - April 24th to July 7th
 - * Sea Trials - July 3rd
- * U.S. Naval Ammunition Depot, Seal Beach - July 8th

Primary sources for this document:

- * A History of the USS Calvert (APA-32), David B. Cullen
- * Calversion, various relevant editions
- * Archival materials, Calvert Marine Museum
- * Interviews, emails, and miscellaneous conversations with former crew members and family members
- * Deck Log Books, USS Calvert. When available online at the National Archives Online Catalog:
 - * Januay 1963. Online: <https://catalog.archives.gov/id/220439509>
 - * February 1963. Online: <https://catalog.archives.gov/id/220439637>
 - * Mary 1963. Online: <https://catalog.archives.gov/id/220439753>
 - * April 1963. Online: <https://catalog.archives.gov/id/220439881>
 - * May 1963. Online: <https://catalog.archives.gov/id/220440005>
 - * June 1963. Online: <https://catalog.archives.gov/id/220440133>
 - * July 1963. Online: <https://catalog.archives.gov/id/220440257>

Selected maps and charts:

- * NOAA Historic Map Locator: <https://www.historicalcharts.noaa.gov/search.php>
- * USGS Historic Map Locator: <https://store.usgs.gov/map-locator>
- * UC San Diego Digital Collection, Pacific Basin Nautical Charts: <https://library.ucsd.edu/dc/collection/bb0786509m>

Year	Month	Day	Location / Movement	Historical Details	Sources, Notes
------	-------	-----	---------------------	--------------------	----------------

Notes:

Times: All times are in "24-hour" time. For example, 0000 is midnight, 0400 is 4am, ... 1200 is noon, 2000 is 8pm ..., and so on.

Condition One-Alfa refers to active amphibious activities by the crew of the Calvert and the employment of the ship's landing craft in these exercises. This condition is represented by a variety of uses of "one alpha" including: One-Alfa, One-Alpha, 1-Alfa, 1-Alpha, and similar. For the most part this document reflects these variations as written in the Calvert's official deck log book.

Material Conditions: "The US Navy uses three "material conditions", which dictate which doors and other fittings can be opened, balancing ease of use with the need to protect the ship. Each of these objects is labeled with an X, Y or Z, as appropriate to the condition it has to be closed under. Condition X-Ray is set during the day while in port or at anchor, and involves the least restrictions. Condition Yoke is typical while a ship is at sea, or at night while in port, while Condition Zebra is used during General Quarters, or at other times when flooding is a serious concern." Source: <https://www.navalgazing.net/Battle-Stations>

Accuracy: When possible the details are corroborated, and in some cases corrected, by official Naval records. However, not all personal recollections captured in this document are corroborated by official Naval records.

Year	Month	Day	Location / Movement	Historical Details	Sources, Notes
1963				"January and February was a time of upkeep for the Calvert and training for the crew in the home port of San Diego."	Cullen, Page 30
1963	January	1	Moored, U.S. Naval Station, San Diego	<p>0000 Moored to port are we, Berth two, pier three, At the U.S. Naval Station, all In San Diego, sunny Cal., Our lines are doubled fore and aft with standard by Bosn's craft. The USS Washburn (AKA-one zero eight) Moored outboard to starboard on this date. Our condition of readiness you can bet Is Material VI with modified Yoke set. The weather is cool, the wind blowing slow; There's clouds up high and clear down below.</p> <p>We're receiving all services from the pier with various ships and units here Including the Pac Fleet, those proud Men 'o' war And yard and district craft galore. SOPA is PhibPac at the Amphib Base Still in Diego, but Coronado's the place PhibRon Five is embarked for a tour. Everything's snug in our little moor We wish you the same and lots of good cheer With all best wishes for a Happy New Year. <i>signed, L.R. Rindal, Ens, USNR</i></p>	Deck Log Book, USS Calvert, January 1963. Selected entries
1963	January	2 - 14	Moored, U.S. Naval Station, San Diego	<p>Moored as before, port side to Pier 3, Berth 32, U.S. Naval Station, San Diego. COMPHIBRON FIVE is embarked in this ship.</p> <p>January 8th: Senior member of the Board of Inspection and Survey, Pacific Section, reported aboard for two days inspection of Calvert.</p> <p>January 14th: Held dock trials.</p>	Deck Log Book, USS Calvert, January 1963. Selected entries

Year	Month	Day	Location / Movement	Historical Details	Sources, Notes
------	-------	-----	---------------------	--------------------	----------------

Chart of Piers, U.S. Naval Station, San Diego

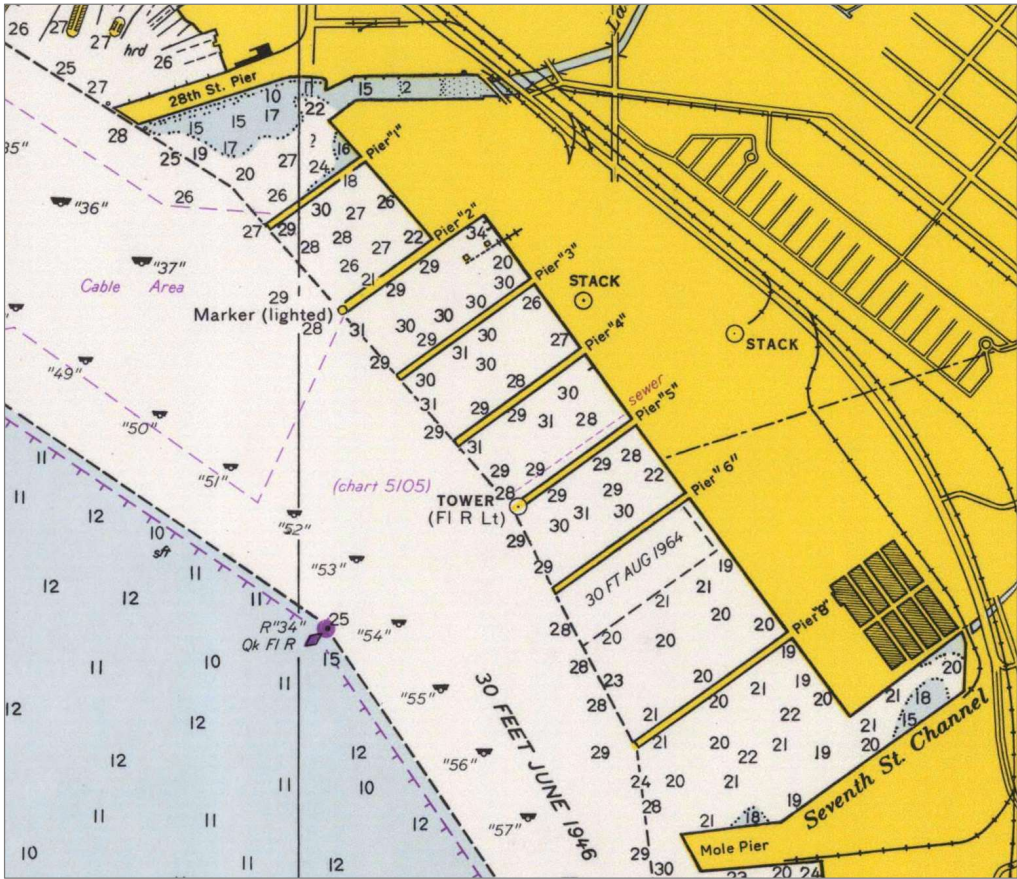



Chart is an extract of:
North San Diego Harbor, #5105,
1:12,000. Soundings in feet.
12th Edition, October 1966.
US Coastal and Geodetic Survey

Full chart online at:
<https://www.historicalcharts.noaa.gov/ima ge.php?filename=5105-10-1966>

Year	Month	Day	Location / Movement	Historical Details	Sources, Notes
1963	January	15		0000 Moored as before.	
				0530 Lit off #1 boiler. 0800 Underway for Anchorage 172, Coronado Roads. 0914 a/e/stop, maneuvering at various courses to load ammunition. 0921 Commenced loading ammunition. 0934 Completed loading ammunition. Maneuvering at various courses and speeds to Anchorage 172. 1003 Anchored. 1019 Secured steering engines and #1 boiler. 1020 Secured the Special Sea and Anchor Detail. Set in port watch. 1130 Exercised the crew at General Quarters. 1140 Set Condition 1-Alfa. 1201 Lowered away boats for ship-to-shore movement. 1430 Lit fires under #1 boiler. 1526 Set the Special Sea and Anchor Detail, commenced hoisting all boats. 1535 Secured from Condition 1-Alfa. 1540 Underway from right flank of boat lane 4 of Red Beach 2 to buoys 8 and 9, San Diego. 1654 Moored fore and aft to Buoys 8 and 9. 1718 Secured main engines and #1 boiler; shifted to auxiliary plant.	Deck Log Book, USS Calvert, January 1963. Selected entries
1963	January	16		0000 Moored as before.	
			Moored, San Diego Bay Underway and anchored, Coronado Roads Underway in the vicinity of San Diego	0833 Underway for Coronado Roads. 0918 Set Condition 1-Alfa. 0931 Anchored, Anchorage 172, Coronado Roads. 0946 Secured main and steering engines. 0946 Let fires die under #1 boiler. 1010 Commenced ship-to-shore movement. 1138 Secured from Condition 1-Alfa. 1230 Set Condition 1-Alfa. 1415 Lighted fires under #1 boiler. 1540 Secured from Condition 1-Alfa, set Special Sea and Anchor Detail, Section Two. 1551 Commenced heaving in anchor. 1601 Underway. Steaming at 7 knots.	Deck Log Book, USS Calvert, January 1963. Selected entries

Year	Month	Day	Location / Movement	Historical Details	Sources, Notes
			Anchorage 172, Coronado Roads indicated by black circle.		<p>Chart of anchorages, boat lanes, and landing beaches. Coronado Roads, Silver Strand, San Diego, CA. Extract of: San Diego Bay, #5107. 1:20,000 scale. Soundings in feet. US Coastal and Geodetic Survey, 1974 Editor's note: Presumed to represent the general location of anchorages, boat lanes, and landing beaches of earlier decades.</p> <p>Full chart online at: https://www.historicalcharts.noaa.gov/ima-ge.php?filename=5107-5-1974</p>

Year	Month	Day	Location / Movement	Historical Details	Sources, Notes
1963	January	17	Underway in the vicinity of San Diego	<p>0000 Steaming independently on local training operations out of San Diego in local operating area MM 15 on various courses to remain within area, speed 7 knots.</p> <p>1300 Exercised the crew at General Quarters for Gunnery Firing Exercises. Set speed 8 knots.</p> <p>1420 Commenced firing.</p> <p>1524 Secured from Gunnery Firing Exercises and General Quarters. Ammunition expended: Two rounds 5"38 VTFN, Seven rounds 3"50 VTNF, 83 rounds 30MM HET SD, 8 rounds 40MM BL&P.</p> <p>1530 Set speed to 15 knots.</p> <p>1825 Maneuvering in the vicinity of Bouy #5, San Diego Channel to lower Commodore's Gig.</p> <p>1834 ComPhibRon Five departed the ship. ComPhibRon Five Admin remained embarked this vessel.</p>	Deck Log Book, USS Calvert, January 1963. Selected entries
1963	January	18	<p>Underway in the vicinity of San Diego</p> <p>Moored, San Diego Bay</p>	<p>0000 Underway, steaming independently in San Diego Operating Area II-8, speed 7 knots.</p> <p>0800 Exercised the crew at General Quarters.</p> <p>0925 Secured from General Quarters.</p> <p>0932 - 0959 Held man overboard drill.</p> <p>1020 Set speed 15 knots.</p> <p>1310 Exercised the crew at In port Fire Drills.</p> <p>1336 Entering Port at San Diego.</p> <p>1516 Moored to Buoys #47 and #48, San Diego.</p>	Deck Log Book, USS Calvert, January 1963. Selected entries
1963	January	19	Moored, San Diego Bay	<p>0000 Moored as before, Buoys 47 and 48, San Diego.</p> <p>1139 Underway to Pier 3, Berth 32.</p> <p>1220 Moored, Pier 3, Berth 32.</p>	Deck Log Book, USS Calvert, January 1963. Selected entries
1963	January	20 - 27	Moored, San Diego Bay	<p>Moored as before, Pier 3, Berth 32.</p> <p>A the crew held a series of fire drills, rescue assistance drills, and collision drills during this period.</p> <p>One Branding Iron CPX was executed during this period.</p> <p>On January 21st, ComPhibRon Five returned from leave and broke his Broad Command Pennant aboard the Calvert. And a few hours later ComPhibRon departed the Calvert and shifted his Broad Command Pennant to the USS Paul Revere.</p>	<p>Deck Log Book, USS Calvert, January 1963. Selected entries</p> <p>Note: In the context of naval exercises, "CPX" stands for Command Post Exercise, a training event focusing on command and control functions, communication, and coordination between headquarters staffs, often simulating real-world scenarios.</p>
1963	January	28	<p>Moored, San Diego Bay</p> <p>Underway in the vicinity of San Diego</p>	<p>0000 Moored as before, Pier 3, Berth 32.</p> <p>0900 Underway to Local Operating Area YY 4.</p> <p>1116 Commenced exercise Z-2-CM ECM Calibration.</p> <p>1532 Set speed 15 knots.</p> <p>1725 Commenced circling to port while waiting for Comex on scheduled Z-10-CC with USS Fort Marion.</p> <p>1735 Commenced Z-010-CC drill, Calvert is tracking ship.</p> <p>2155 Completed exercise.</p>	Deck Log Book, USS Calvert, January 1963. Selected entries

Year	Month	Day	Location / Movement	Historical Details	Sources, Notes
1963	January	29	Underway in the vicinity of San Diego	0000 Steaming independently in Op Area SS-5. Speed 8 knots. 0800 Anchored in Anchorage 172, Coronado Roads. 0822 Condition Zebra set throughout the ship. Set Condition 1-Alfa. 0837 Away all designated boats. 1024 Commenced hoisting all boats. 1106 Secured from Condition 1-Alfa.	Deck Log Book, USS Calvert, January 1963. Selected entries
			Moored, San Diego Bay	1230 Set Condition 1-Alfa, continued with Beaching Exercises. 1536 Secured from Condition 1-Alfa. 1539 Underway to Buoys 8 and 9, San Diego. 1646 Moored to Buoys 8 and 9.	
1963	January	30	Moored, San Diego Bay	0000 Moored to Buoys 8 and 9, San Diego. 0756 Embarked 39 officers and 1 enlisted personnel for demonstration assault landing. 0835 Underway to Anchorage 172, Coronado Roads. 0900 Exercised the crew at General Quarters. 0909 Set Condition 1-Alfa.	Deck Log Book, USS Calvert, January 1963. Selected entries
			Underway in the vicinity of San Diego	0919 Anchored in Anchorage 172, right flank to Red Beach II, Coronado Roads. 1140 Secured from Condition 1-Alfa. 1230 Exercised the crew at Condition 1-Alfa. 40 students from Nav-PhibSchol P-1 Class were landed on Red Beach II via Assault Craft. 1511 Underway to Buoys 8 and 9, San Diego. 1559 Moored to Buoys 8 and 9.	
1963	January	31	Moored, San Diego Bay	0000 Moored to Buoys 8 and 9, San Diego. 0757 Underway. 0945 Commenced maneuvering at various courses and speeds while conducting Seamanship and Communication Exercises with USS Okanogan. 1213 Completed tactical exercises with Okanogan.	Deck Log Book, USS Calvert, January 1963. Selected entries
			Underway in the vicinity of San Diego	1315 Exercised the crew at General Quarters. Entered Op Area YY 4, commenced swinging ship to calibrate ECM D.F. Antenna. 1432 Secured from General Quarters. 1546 Enroute to Op Area II 8 for night steaming. Secured from ECM D.F. Antenna Calibration. Set speed 8 knots. 1939 Visibility decreased to about one mile, commenced sounding fog signals. 2001 Stationed Fog Lookouts on the Forecastle.	

Year	Month	Day	Location / Movement	Historical Details	Sources, Notes
1963	February	1	Underway in the vicinity of San Diego Moored, San Diego Bay	0000 Underway, steaming independently in Operation Area II-3. Speed 5 knots. Visibility is approximately 200 yards, and the ship is sounding fog signals. 0245 Lookout reported visual contact. All engines stop. 0250 All engines ahead 1/3. 0814 Ceased sounding fog signals, visibility increased to 3 miles. 0825 Commenced holding Mooring Drills, Coronado Roads. 1230 Secured from Mooring Drills. 1417 Moored to Buoys 50 and 51.	Deck Log Book, USS Calvert, February 1963. Selected entries
1963	February	2 - 9	Moored, San Diego	Moored to Buoys 50 and 51, San Diego.	Deck Log Book, USS Calvert, February 1963. Selected entries
1963	February	10 - 20	Moored, San Diego	February 10th: Gale Condition One - Heavy Weather Measure; Charlie set. February 11th: Changed mooring to Pier 3, Berth 32. The engineering plant placed in a cold iron status. February 18th: Five LCVPs dispatched to USS Oak Hill to be used in amphibian operations.	Deck Log Book, USS Calvert, February 1963. Selected entries
1963	February	21	Moored, San Diego	0000 Moored to Pier 3, Berth 32. 0530 Lit fires under #1 boiler. 0700 Set material condition Yoke throughout the ship. 0800 Underway. 0836 Moored to Buoys 47 and 48.	Deck Log Book, USS Calvert, February 1963. Selected entries
1963	February	22	Moored, San Diego	Received message from SOPA warning that unidentified swimmers were attempting to board ships in this area. Increased topside security watch to 2 men and illuminated waterborne boats.	Deck Log Book, USS Calvert, February 1963. Selected entries
1963	February	25	Moored, San Diego Underway in the vicinity of San Diego	Moored as before. 0859 Underway. 1310 Anchored in Anchorage 148, right flank of Beach Lane Yellow II, Coronado Roads. 1324 Set condition 1-Alfa. 1346 The port vang on #2 boom parted while placing LCVP 6 in the water. #2 boom out of control and LCVP 6 is swinging out of control. 1349 LCVP 6 thrown against port stantion and a hole opened up in her starboard quarter. Boat and boom are under control. 1405 LCVP 6 placed in the skids. 1500 Fog closing in, recalled all boats. Commenced sounding fog signals. 1549 Secured from Condition 1-Alfa. 2140 Underway for San Diego Operation Area II-7.	Deck Log Book, USS Calvert, February 1963. Selected entries

Year	Month	Day	Location / Movement	Historical Details	Sources, Notes
1963	February	26		0000 Steaming independently to Local Operation Area II-7. Speed 5 knots. Visibility is approximately 50 yards, sounding fog signals due to heavy fog.	Deck Log Book, USS Calvert, February 1963. Selected entries
				0804 Visibility increased to 3 miles. Secured fog signals and fog lookouts.	
1963	February	26	Underway in the vicinity of San Diego	0900 Exercised the crew at General Quarters. 0917 Maneuvering at various courses and speeds within Local Operation Areas II 6 and 7 for Exercise Z-1-G. 1108 Secured from General Quarters. Z-1-G cancelled due to poor weather conditions. 1425 Exercised the crew at General Quarters for Z-1-G Gunnery Exercise. 1500 Commenced firing 40MM to starboard.	Deck Log Book, USS Calvert, February 1963. Selected entries
			Anchored, Coronado Roads	1559 Secured from General Quarters and Gunnery Exercise. Ammunition expended: 36 rounds of 40 MM HEIT SD, 4 rounds, 40MM BL&P. 1651 Visibility decreased to two miles in fog. Stationed Fog lookouts on the bow. 1724 Sighted unidentified object close aboard to port. Commenced maneuvering to come alongside the object. 1745 Recovered object with assistance of 2 swimmers. Object identified as tail section target drone. 1755 Set speed 15 knots.	
1963	February	26	Anchored, Coronado Roads	1950 Anchored in Anchorage 146-A off Point Loma, San Diego.	Deck Log Book, USS Calvert, February 1963. Selected entries
				2000 Underway for Anchorage 148. 2020 Anchored in Anchorage 148.	

Anchorage 146 and 148, Coronado Roads indicated by black circles.

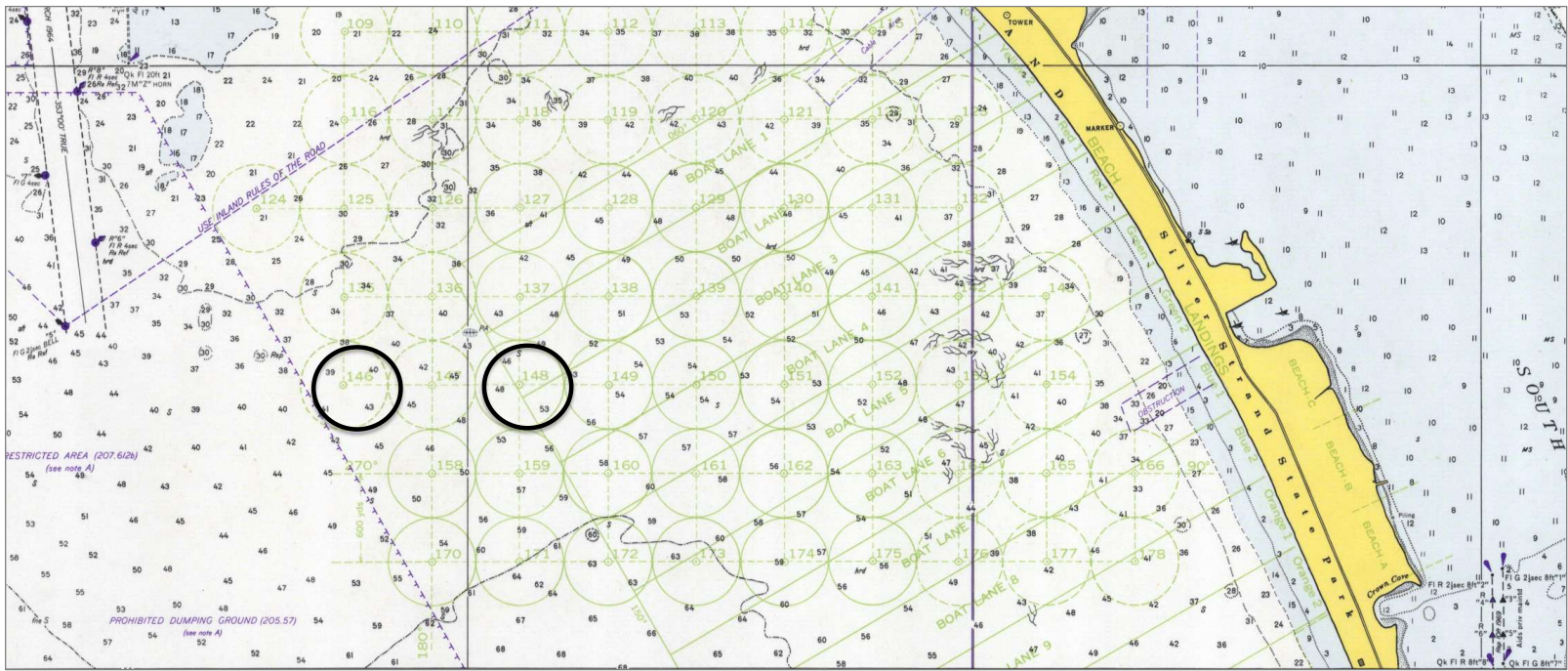


Chart of anchorages, boat lanes, and landing beaches. Coronado Roads, Silver Strand, San Diego, CA.

Extract of: San Diego Bay, #5107.
1:20,000 scale. Soundings in feet. US Coastal and Geodetic Survey, 1974

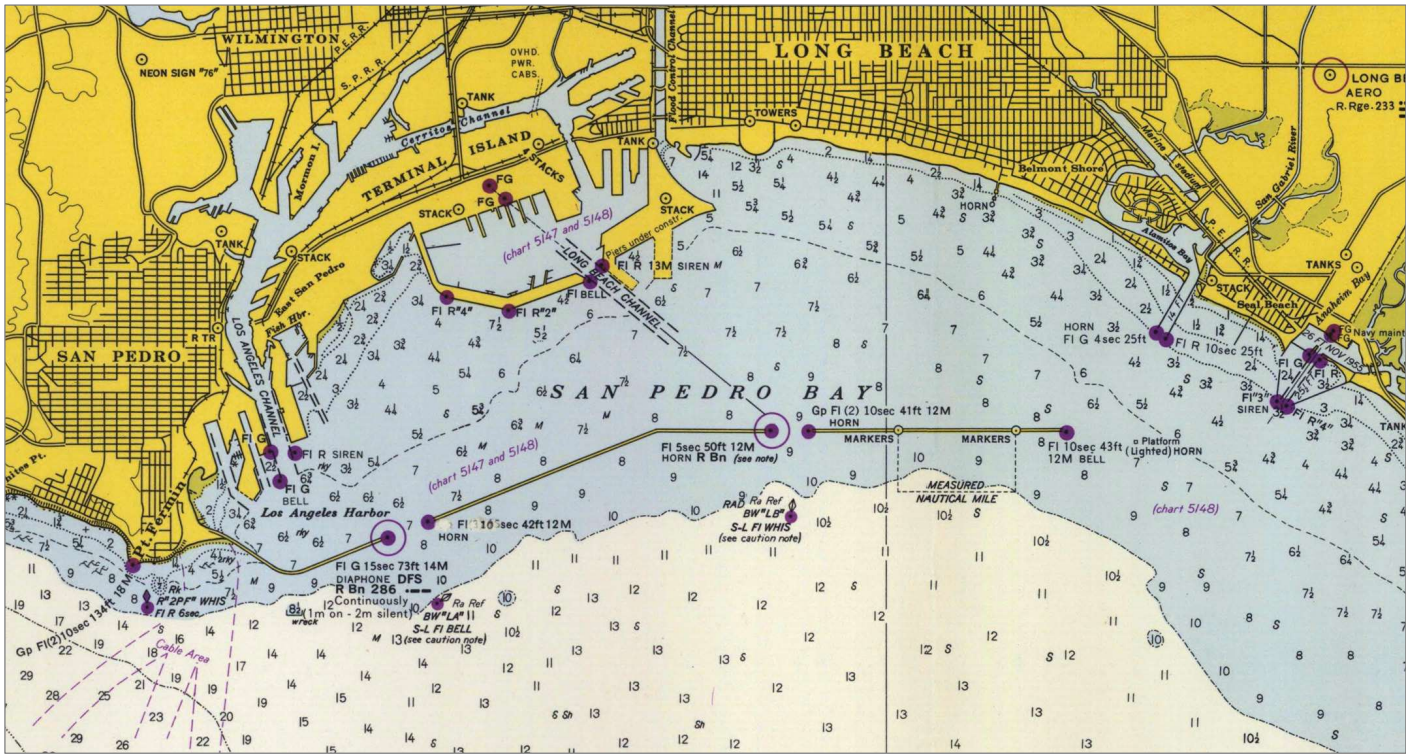
Editor's note: Presumed to represent the general location of anchorages, boat lanes, and landing beaches of earlier decades.

Full chart online at:
<https://www.historicalcharts.noaa.gov/ima ge.php?filename=5107-5-1974>

Year	Month	Day	Location / Movement	Historical Details	Sources, Notes
1963	February	27	Anchored, Coronado Roads	0000 Anchored in Anchorage 148. 0730 Exercised the crew at 1-Alfa. 1035 Commenced hoisting boats. 1112 Secured from Condition 1-Alfa. 1138 Underway from Anchorage to practice mooring buoys.	Deck Log Book, USS Calvert, February 1963. Selected entries
			Underway in the vicinity of San Diego Moored, San Diego Harbor	1146 Commenced making practice approaches on mooring buoys. 1415 Completed maneuvering on buoys. 1500 Commenced maneuvering in local Operations Area YY-3. 1501 Exercised the crew at General Quarters for Atomic Defense Drill. 1506 Set Condition Zebra throughout the ship. 1607 Secured from General Quarters. Set Condition Yoke. 1855 Commenced approach in traffic corridor to San Diego Harbor. 2110 All stop. Moored to buoy 50 and 51, San Diego Harbor.	
1963	February	28	Moored, San Diego Harbor	Moored as before.	Deck Log Book, USS Calvert, February 1963. Selected entries
1963	March	1	Moored, San Diego Harbor	0000 Moored as before, to Buoys 50 and 51, San Diego Harbor.	Deck Log Book, USS Calvert, March 1963. Selected entries
			Underway in the vicinity of San Diego Moored, San Diego Harbor	Family Cruise 0836 Underway for local operating area YY-1 with 184 dependents and guests aboard for dependents cruise. 1040 to 1135 Demonstrated highline exercise for guests, with USS Manatee. 1244 Anchored, Anchorage 178, right flank Blue Beach 2, Coronado Roads. 1300 Exercised the crew at General Quarters. Set Condition 1-Alfa. 1520 Underway from Anchorage to Buoys 50 and 51, San Diego. 1624 Moored to Buoy 50 and 51.	
1963	March	2 - 6	Moored, San Diego Harbor	Moored as before.	Deck Log Book, USS Calvert, March 1963. Selected entries
1963	March	7	Moored, San Diego Harbor	0000 Moored as before.	Deck Log Book, USS Calvert, March 1963. Selected entries
			Underway in the vicinity of San Diego Moored, San Diego Harbor	1008 Underway for local operation area II8. 1430 Exercised the crew at General Quarters; Set condition Zebra. 1535 Steaming at various speeds while conducting Z-1-G gunnery exercise. Commenced firing 40mm mounts. 1710 Secured from gunnery exercise. Expended 8 rounds of BL&T and 243 rounds of Heit 40mm. 2125 Moored to Buoys 50 and 51, San Diego Harbor.	

Year	Month	Day	Location / Movement	Historical Details	Sources, Notes
1963	March	8 - 10	Moored, San Diego Harbor	Moored as before.	Deck Log Book, USS Calvert, March 1963. Selected entries Note: CPX: Command Post Exercise.
				March 8th: Took on fresh water and fuel oil. Captain's inspection of mess and berthing compartments.	
				March 10th: Executed Branding Iron CPX.	
1963	March	11	Moored, San Diego Harbor Underway to Long Beach, California	Moored as before, to Buoys 50 and 51, San Diego. The ship is in condition of readiness V with material condition Yoke (modified) set. The engineering plant is in an auxiliary status with number 2 boiler, number 1 and 3 D.C. generators and number 1 A.C. generator providing ship's power.	Deck Log Book, USS Calvert, March 1963. Selected entries
				0645 Lit fires under No. 1 boiler.	
				0900 Underway. 1012 Set course for Long Beach, California. 1038 A/E/A Full. Set speed 16 knots. 1517 Set speed 10 knots.	

San Pedro Bay



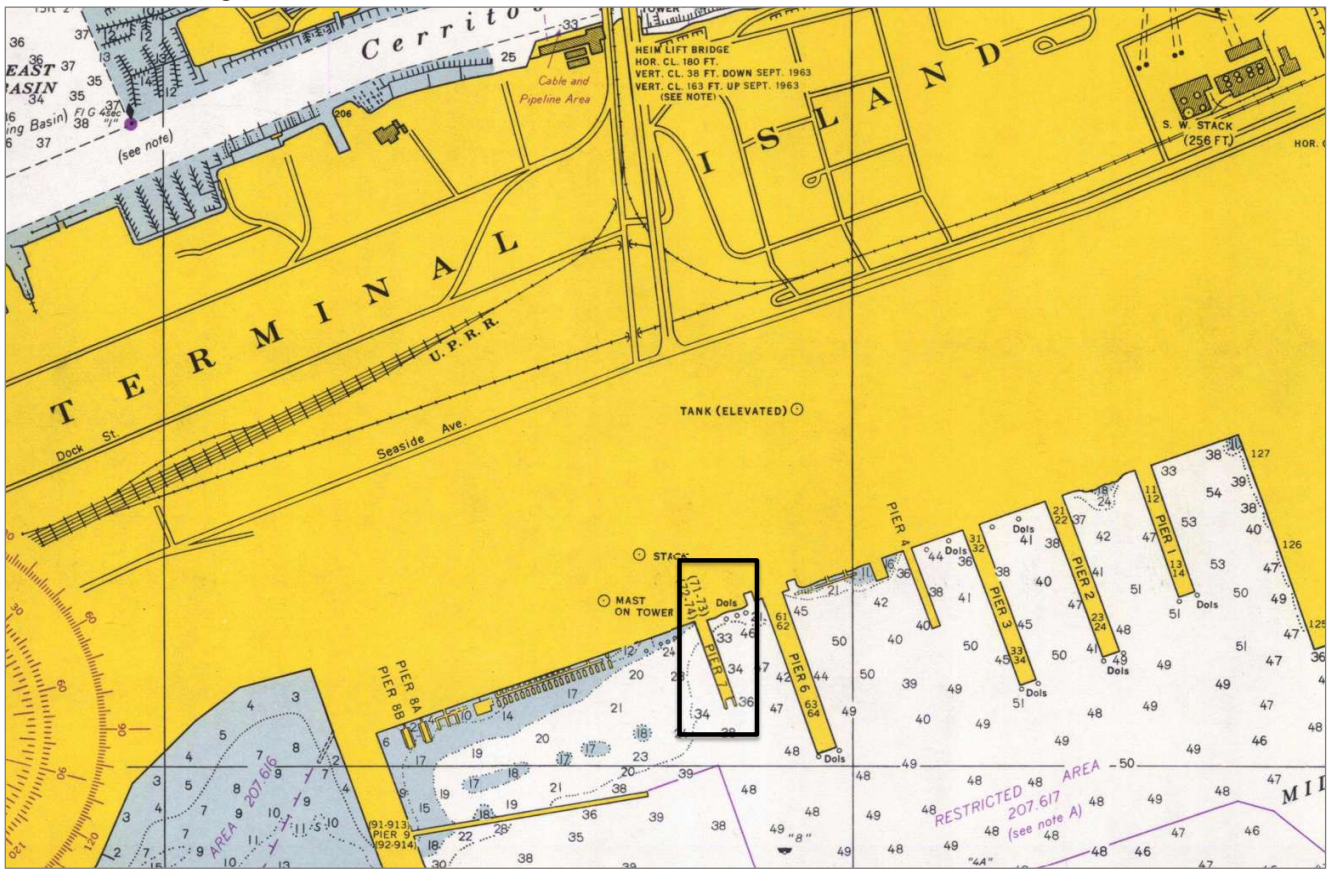
Extract of: San Pedro Channel, Chart #5143.
1:80,000 scale. Soundings in feet. US Coast and Geodetic Survey, 1958

Full chart online at:
<https://www.historicalcharts.noaa.gov/ima.ge.php?filename=5142-12-1958>

Year	Month	Day	Location / Movement	Historical Details	Sources, Notes
1963	March	11	Moored, Long Beach	1631 Moored outboard side to USS Delta (AR 9), Pier 7, U.S. Naval Station, Long Beach. 1655 Secured main engines and steering engines. Secured No. 1 boiler. 1658 USS Buckley (DD 808) moored to port side. 1810 Secured No. 2 boiler.	Deck Log Book, USS Calvert, March 1963. Selected entries

The piers at Terminal Island, U.S. Naval Station, Long Beach.

Pier 7 indicated by black rectangle.



Extract of Los Angeles and Long Beach Harbors, Chart #5147
1:12,000 scale. Soundings in feet.
U.S. Coast and Geodetic Survey Map, 1966

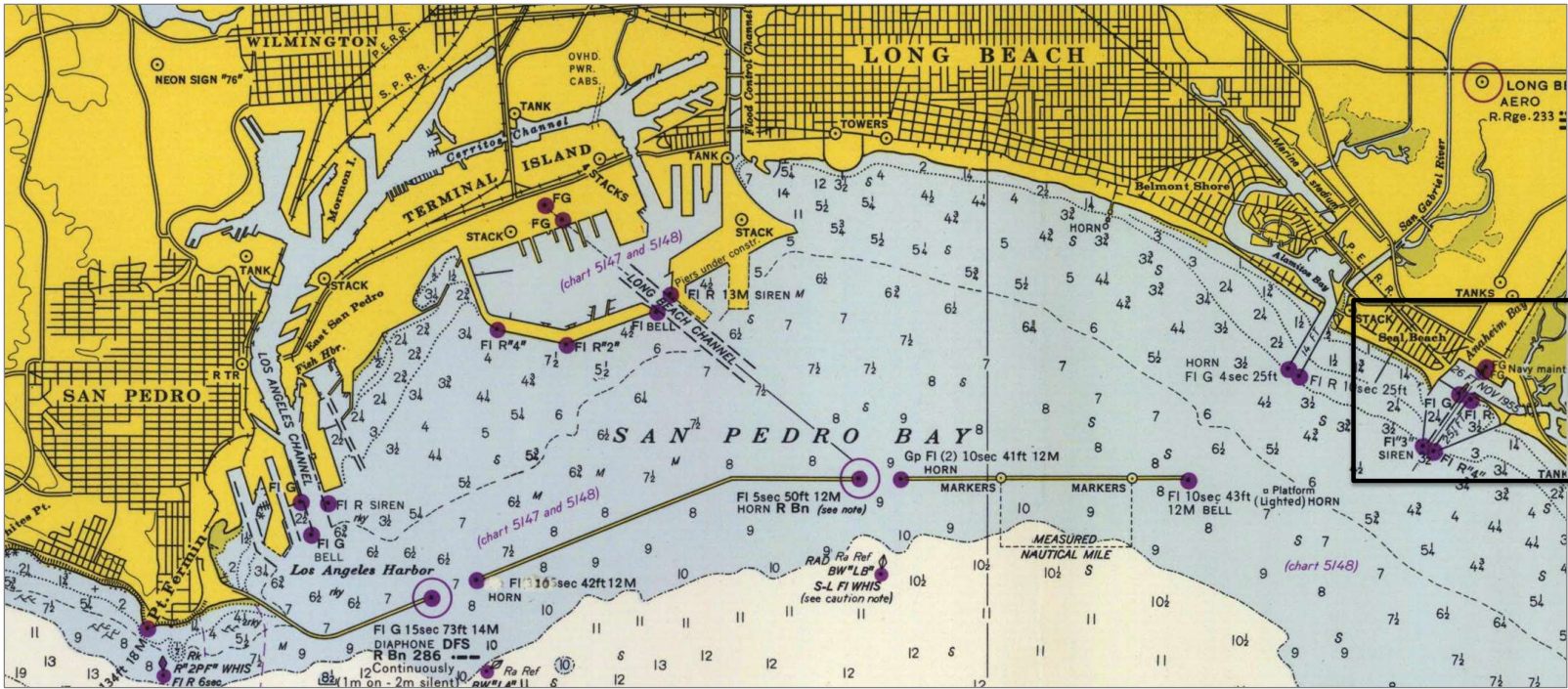
Full chart online:
<https://www.historicalcharts.noaa.gov/ima.ge.php?filename=5147-4-1966>

Year	Month	Day	Location / Movement	Historical Details	Sources, Notes
1963	March	12 - 28	Moored, Long Beach	<p>Moored as before, Pier 7, U.S. Naval Station, Long Beach. The Engineering Plant is on 48 hours notice for getting underway. The ship is in Condition of Readiness V with condition Yoke (modified) set.</p> <p>March 16: 2105 Received heavy weather warning from COMPHIBPAC; Moved all boats to sheltered area.</p> <p>March 17th: Winds peaked at 12 knots at 1000 and by sunrise calm conditions returned.</p> <p>March 22nd: CPX Branding Iron.</p> <p>March 28th: FLEWEAFAC SDIEGO established small craft warnings for the Long Beach area. Mustered crew at foul weather parade. Winds peaked at 15 knots at 0600 and returned to calm conditions by 1200.</p> <p>During this period several officers and enlisted personnel returned to the Calvert upon completion of Amphibious Training at the Coronado Naval Amphibious School, San Diego and the U.S. Fleet Anti-Air Warfare School, San Diego.</p>	Deck Log Book, USS Calvert, March 1963. Selected entries
1963	March	29	<p>Moored, Long Beach</p> <p>Underway to San Diego</p> <p>Moored, US Naval Station, San Diego</p>	<p>0000 Moored as before. Boiler No. 2 and generators No. 2 and No. 3 D.C. and No. 1 A.C. are on the line.</p> <p>0530 Lighted fires under No. 1 Boiler.</p> <p>0800 Underway for San Diego.</p> <p>0843 Commenced using International Rules of the Road, set speed 15 knots.</p> <p>0915 Set speed to 16 knots.</p> <p>0945 Mustered crew at quarters for Captain's Personnel Inspection.</p> <p>1100 Secured from Captain's Personnel Inspection.</p> <p>1413 Set various speeds and courses to conform with San Diego channel.</p> <p>1548 Moored starboard side to pier 3, Berth 35, U.S. Naval Station, San Diego.</p> <p>1600 Let fires die under No. 1 and No. 2 boilers. Secured main and steering engines.</p>	Deck Log Book, USS Calvert, March 1963. Selected entries
1963	March	30 - 31	Moored, US Naval Station, San Diego	Moored as before, starboard side to Pier 3, Berth 35, U.S. Naval Station, San Diego.	Deck Log Book, USS Calvert, March 1963. Selected entries
1963	April	1	Moored, US Naval Station, San Diego	<p>Moored as before, starboard side to Pier 3, Berth 35, U.S. Naval Station, San Diego.</p> <p>0100 Wind force 11 knots.</p> <p>1200 Wind force 20 knots.</p> <p>1630 Put out and doubled up one 5 inch nylon line aft to the pier.</p> <p>1911 SOPA set gale condition one, measure Delta.</p> <p>1930 Put a 1.25 inch wire out forward to the pier.</p> <p>2300 Wind force 14 knots.</p>	Deck Log Book, USS Calvert, April 1963. Selected entries
1963	April	2	Moored, US Naval Station, San Diego	<p>0000 Moored as before. Gale condition one, measure Delta is set.</p> <p>0100 Wind force 13 knots.</p> <p>1200 Wind force 2.</p> <p>1235 Secured from gale condition one.</p>	Deck Log Book, USS Calvert, April 1963. Selected entries

Year	Month	Day	Location / Movement	Historical Details	Sources, Notes
1963	April	3 - 7	Moored, US Naval Station, San Diego	Moored as before.	Deck Log Book, USS Calvert, April 1963. Selected entries
				April 4th: Off-loaded 152,000 gallons of N.S.F.O fuel. April 5th: Transfer of the Calvert's boats to the U.S. Naval Amphibious Base, Coronado, for storage, upkeep, and maintenance.	
1963	April	8	Moored, US Naval Station, San Diego	Moored, as before. 0600 Commenced loading vehicles. 0630 Completed loading seven vehicles onto No. 4 for transportation to Seal Beach, California. Lighted fires under No. 1 boiler.	Deck Log Book, USS Calvert, April 1963. Selected entries

Year	Month	Day	Location / Movement	Historical Details	Sources, Notes
1963	April	8	Underway to Seal Beach, CA Moored, Seal Beach, CA	Underway for Seal Beach, U.S. Naval Weapons Station 0900 Underway for Seal Beach. 1026 Set speed 16 knots. 1030 Commenced brining ammunition topside. 1539 Set speed 5 knots.	Deck Log Book, USS Calvert, April 1963. Selected entries
1963	April	8	Moored, Seal Beach, CA	1610 Moored Port Side to Ammunition Wharf, U.S. Naval Weapons Station, Seal Beach, California. 1616 Secured main and steering engines, let fires die under No. 1 boiler. 1645 Completed brining ammunition topside, forward. 1830 to 1945 Offloaded vehicles.	Deck Log Book, USS Calvert, April 1963. Selected entries

San Pedro and Seal Beach. Seal Beach Is located right center, indicated by back rectangle.

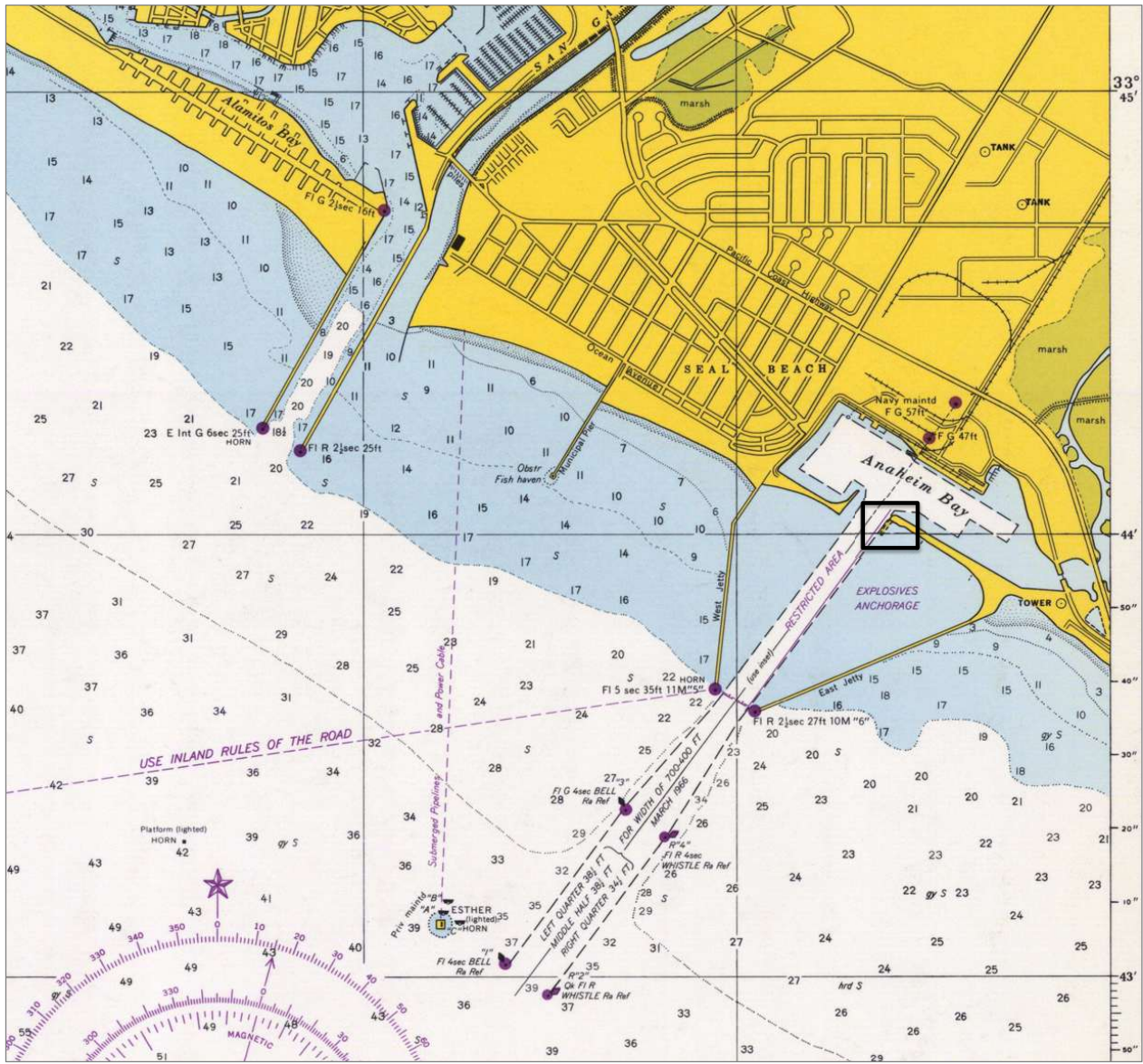


Extract of: San Pedro Channel, Chart #5143.
1:80,000 scale. Soundings in feet. US Coastal and Geodetic Survey, 1958

Full chart online at:
<https://www.historicalcharts.noaa.gov/imagetools?filename=5142-12-1958>

Year	Month	Day	Location / Movement	Historical Details	Sources, Notes
------	-------	-----	---------------------	--------------------	----------------

Seal Beach, San Pedro Bay. Presumed location of Ammunition Wharf indicated by black rectangle.



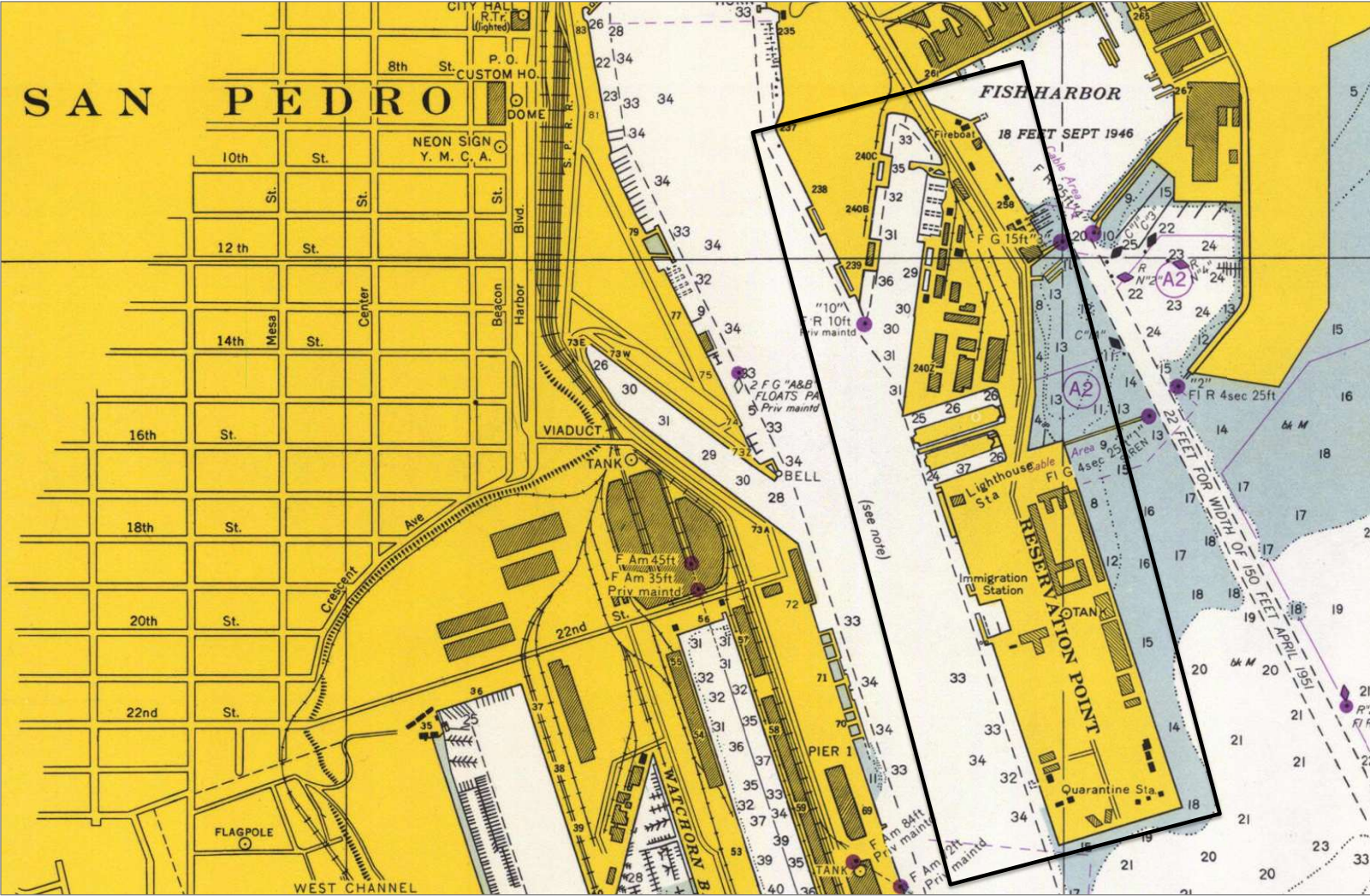
Extract of: San Pedro Bay, Chart #5148.
Original scale 1:18,000. Soundings in feet.
US Coastal and Geodetic Survey, 1968

Full chart online at:
<https://www.historicalcharts.noaa.gov/image.php?filename=5148-3-1968>

Year	Month	Day	Location / Movement	Historical Details	Sources, Notes
1963	April	9	Moored, Seal Beach, CA	0000 Moored as before. All ammunition is top side on No. 2 and 6 hatches. 0820 to 1045 Offloaded ammunition. 1242 Electrical fire in the boat shop, compartment A-0-104. 1245 Fire out, no major damage.	Deck Log Book, USS Calvert, April 1963. Selected entries
1963	April	10	Underway to San Pedro, CA Dry Docked, Bethlehem Steel Corporation, Terminal Island, San Pedro, California	0000 Moored as before. 0515 Lighted fires under boiler No. 1. 0520 Jacked over main engines. Underway to Bethlehem Steel Shipyard, Terminal Island, San Pedro 0740 Underway from Ammunition Wharf to Bethlehem Steel Shipyard, Terminal Island, San Pedro, California. 0758 Set speed 15 knots. 0834 Set speed 5 knots. 0845 YTB made up to port quarter. Drydocking 0853 Commenced swinging out to port into Channel maneuvering into position for stern first entry into dry dock No. 1, Bethlehem Steel Corp. shipyard. 0908 YTB cast off and came around to starboard bow to push. 0909 Stern passed over the sill of drydock and the docking officer assumed control of the ship. 0914 Secured main engine; Let fires die under No. 1 boiler. 0940 Commenced raising the drydock. 1005 Resting on keel blocks. 1045 Completed raising drydock.	Deck Log Book, USS Calvert, April 1963. Selected entries

Year	Month	Day	Location / Movement	Historical Details	Sources, Notes
------	-------	-----	---------------------	--------------------	----------------

Bethlehem Steel Shipyard, Terminal Island, San Pedro, CA. Shipyard indicted by black rectangle.



Extract of Los Angeles and Long Beach Harbors, Chart #5147
1:12,000 scale. Soundings in feet.
U.S. Coast and Geodetic Survey Map, 1966

Full chart online:
<https://www.historicalcharts.noaa.gov/ima.ge.php?filename=5147-4-1966>

Year	Month	Day	Location / Movement	Historical Details	Sources, Notes
1963	April 24 to Mid May		Bethlehem Steel drydock, San Pedro, California	1) "The Calvert entered the Bethlehem Steel drydock in San Pedro, California for a two and one-half week overhaul period." 2) "\$134,982 for drydocking phase of regular overhaul of the attack transport USS Calvert."	1) Cullen, Page 31 2) <u>\$3 Million Navy Shipyard Work</u> . News-Pilot, San Pedro, California. April 19, 1963
1963	April	11 - 22	Dry Docked, Bethlehem Steel Corporation, Terminal Island, San Pedro, California	Drydocked, as before, resting on keel blocks in Dry Dock No. 1, Bethlehem Steel Corp. shipyard, San Pedro, California. 15th - Commanding Officer with Bethlehem Steel Representatives and Hull Board commenced hull inspection.	Deck Log Book, USS Calvert, April 1963. Selected entries
1963	April	23	Dry Docked, Bethlehem Steel Corporation, Terminal Island, San Pedro, California Underway to San Diego Moored, National Steel Company Shipyard, San Diego	0000 Resting on keel blocks in Dry Dock No. 1 at Bethlehem Steel Corporation, Terminal Island, San Pedro, California. 0730 Lighted fires under boiler No. 2. 0800 Stationed the undocking detail. 0900 Inspection completed of all hull openings. Condition Yoke set throughout the ship. 1018 Commenced flooding the dry dock. 1042 Resting on keel blocks in 15 feet of water. Commenced inspection of lower decks and hull fittings for water tight integrity. 1110 Completed inspection, continued flooding drydock. 1126 Ship is clear of the keel blocks. 1157 Commenced moving ship clear of dry dock. 1209 Stern passed over the sill of the dry dock. 1210 Underway from Dry Dock. 1256 Tested the main engines with steam. 1345 Commenced using International Rules of the Road. Set speed to 16 knots. 2034 Moored starboard side to the North side of Pier 12, National Steel Company Shipyard, San Diego. 2050 Secured the main and steering engines. Let fires die under No. 1 boiler.	Deck Log Book, USS Calvert, April 1963. Selected entries
1963	A regular yard period at National Steel Shipyard, San Diego, for a regular yard, April 24th to July 7th.""				Cullen, Page 30-31
1963	April	24 - 31	Moored, National Steel Company Shipyard, San Diego	Moored starboard side to the North side of Pier 12, National Steel Company Shipyard, San Diego. April 27th: Captain's personnel inspection and inspection of personnel, messing, and berthing spaces. COMPHIBRON FIVE broke his full broad command pennant aboard this ship.	Deck Log Book, USS Calvert, April 1963. Selected entries

Year	Month	Day	Location / Movement	Historical Details	Sources, Notes
------	-------	-----	---------------------	--------------------	----------------

San Diego Bay. National Steel Company Shipyard indicated by black rectangle.

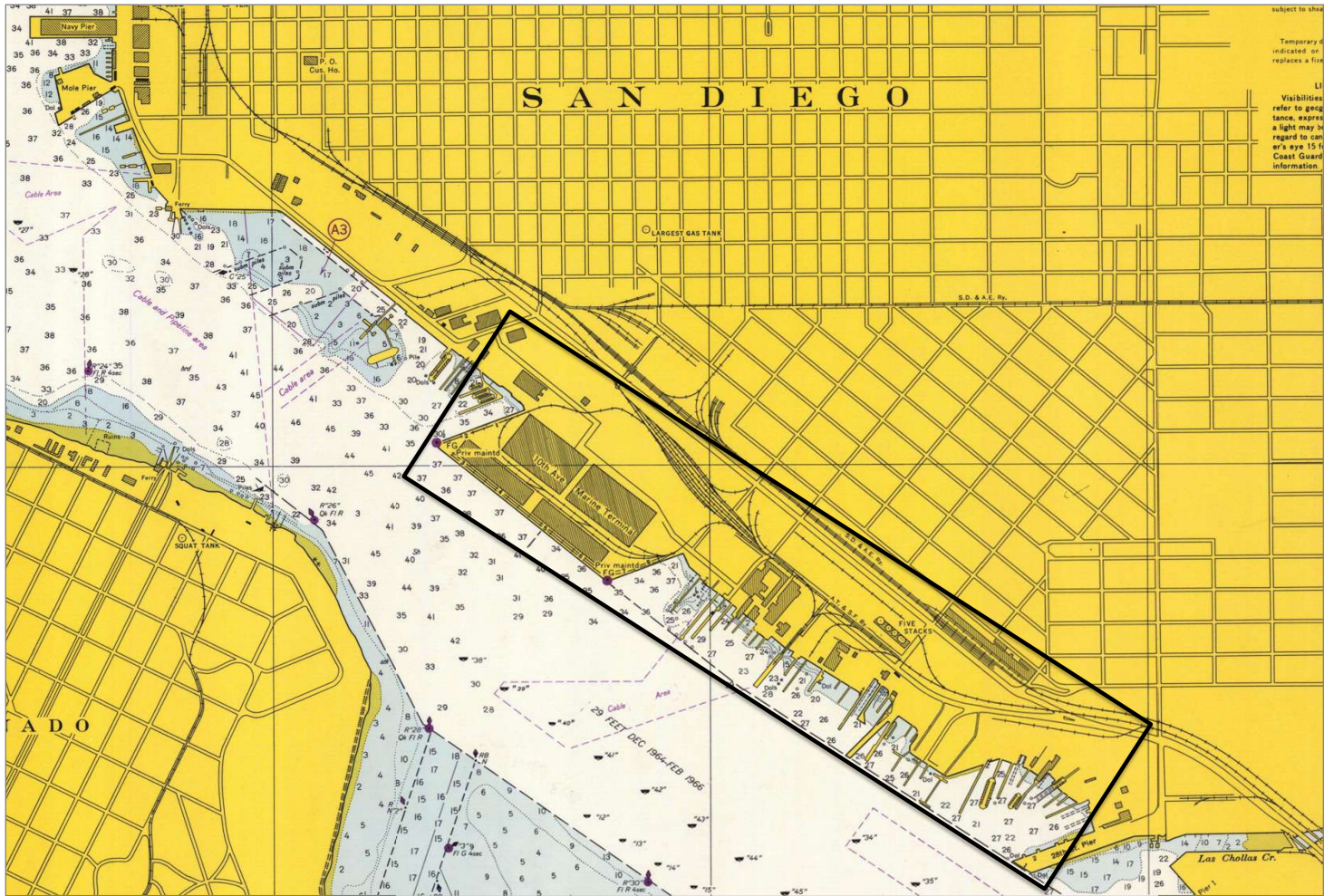


Chart is an extract of:
North San Diego Harbor, #5105,
1:12,000. Soundings in feet.
12th Edition, October 1966.
US Coastal and Geodetic Survey

Full chart online at:
<https://www.historicalcharts.noaa.gov/ima ge.php?filename=5105-10-1966>

1963	May	1 - 30	Moored, National Steel Company Shipyard, San Diego	<p>Moored starboard side to the north side of Pier 12, National Steel and Shipbuilding Company, San Diego. COMPHIRON FIVE embarked in this ship.</p> <p>May 2nd: 1807 to 1835 Conducted Fire Drill.</p> <p>May 3rd: 1500 to 1535 Captain's personnel inspection.</p> <p>May 25th: 0800 Captain returned from eleven days leave. Captains personnel inspection 0815 to 0915.</p>	Deck Log Book, USS Calvert, May 1963. Selected entries
------	-----	--------	--	---	---

Year	Month	Day	Location / Movement	Historical Details	Sources, Notes
1963	June	1 - 23	Moored, National Steel Company Shipyard, San Diego	Moored starboard side to the north side of Pier 12, National Steel and Shipbuilding Company, San Diego. COMPHIRON FIVE embarked in this ship.	Deck Log Book, USS Calvert, June 1963. Selected entries
				June 11th: CPX Branding Iron executed.	
				June 13th: Tested safeties on Boiler No. 2.	
1963	June	24 - 30	Moored, National Steel Company Shipyard, San Diego	June 15th: Captain's inspection of personnel, berthing, and messing compartments. Between the hours of 1630 and 1830 the Calvert was towed from Pier 12, and back, to make way for the launch of the USS Mars (AFS-1) to slide down the ways.	Deck Log Book, USS Calvert, June 1963. Selected entries
				Moored as before.	
				June 24th: 0930 While operating No. 8 winch, Lazy Guy pad eye on head of boom jammed against face plate, before power could be secured head block parted resulted in boom drop of approximately 8 feet. There were no personnel casualties. 1220 to 1720 Received 19,824 gallons diesel fuel and 279,510 gallons fuel oil. Approximately 100 gallons fuel oil spilled into the bay due to valve being tagged wrong. Port Control Duty Officer notified. USS Prairie (AD-15) came alongside to clean up oil spill.	
				June 26th: 0840 to 1115 Exercised at Dock Trials.	
1963	July	1 - 2	Moored, National Steel Company Shipyard, San Diego	June 28th: 1010 to 1150 Exercised at Dock Trials.	Deck Log Book, USS Calvert, July 1963. Selected entries
				Moored starboard side to the north side of Pier 12, National Steel and Shipbuilding Company, San Diego. COMPHIRON FIVE embarked in this ship.	

Year	Month	Day	Location / Movement	Historical Details	Sources, Notes
1963	July	3		0000 Moored as before, starboard side to Pier 12, National Steel and Shipbuilding Company, San Diego. 0515 Lighted fires under #1 boiler. 0530 Lighted fires under #2 boiler. Commenced jacking over main engines.	
			Moored, National Steel Company Shipyard, San Diego	Underway for Sea Trials 0810 A/E/Back 2/3, Underway for sea trials. 0821 Ship's whistle found to be out of commission. 0831 Receiving antenna on the open bridge parted. 0935 Commenced using international rules of the road. 1029 Set speed 10 knots. 1034 Set speed 12 knots. 1041 Set speed 15 knots. 1154 Set speed 16 knots. 1245 A/E/A flank. Set speed 18 knots. 1345 Steering by hand electric. 1408 Exercised the crew at General Quarters. 1425 Set speed 10 knots. 1435 Secured from General Quarters. 1519 Maneuvering on various courses and speeds to stand into San Diego Harbor.	Deck Log Book, USS Calvert, July 1963. Selected entries
			Underway in the vicinity of San Diego for Sea Trials	1634 Moored starboard side to the north side of Pier 12, National Steel and Ship Building Co., San Diego.	Editor's note: The 1245 to 1425 speed of 18 knots is the fastest recorded speed of the Calvert known based review of Deck Log entries (1940s, 1960s), where previous top speeds are logged at 16.5 knots.
1963	July	4 - 7		Moored as before.	
			Moored, National Steel Company Shipyard, San Diego	July 4th: 1100 Rang ship's bell for four minutes in honor of the anniversary of our Nations Independence.	Deck Log Book, USS Calvert, July 1963. Selected entries
1963	July	8		0000 Moored as before. COMPHIBRON FIVE is embarked in this ship.	
			Moored, National Steel Company Shipyard, San Diego	0604 SPS-10 Radar Antenna removed. 0630 Fires lighted under #2 boiler. 0905 A/B 1/3. Underway enroute to Seal Beach, California. 1104 Set speed to 16 knots. 1253 Fathometer out of order. 1418 A/E/A Flank. Set speed 16.5 knots. 1617 Moored port side to mole pier, U.S. Naval Ammunition Depot, Seal Beach.	Deck Log Book, USS Calvert, July 1963. Selected entries

End of VOLUME for the period January 1, 1963 to July 8, 1963