

A History of the USS Calvert - Research notes for the period January 1, 1959 to December 31, 1959

Year	Month	Day	Location / Movement	Historical Details	Sources, Notes
------	-------	-----	---------------------	--------------------	----------------

Introduction

This document is a chronologically ordered set of historical research notes for the period January 1, 1959 to December 31, 1959.

Chronological highlights for 1959

- * Upkeep and amphibious training in San Diego and Coronado Roads - January 1 - February 2.
- * PHIBLEX 12-59 at Camp Pendleton - February 3 - 12
- * San Diego Naval Station - February 12 - 23
- * San Diego and Coronado Roads area - Amphibious training exercises and at sea exercises - February 24 - April 1
- * PHIBLEX 15-59 - Operation Big Land - Coronado Roads and Camp Pendleton - April 2 - 8
- * San Diego Naval Station - April 9 - May 17
- * Phiblex 17-59, Operation Twin Peaks - Coronado Roads, and Camp Pendleton - May 18 to June 1
- * San Diego Naval Station - June 2 - 11 - A period of upkeep (Cullen, p 25)
- * San Diego area - June 12 - Dependents' Day Cruise
- * San Diego area - June 13 - 17 - Operations
- * San Diego Naval Station - June 18 - July 5
- * San Diego to Acapulco; Acapulco to San Diego - July 6 - 19
- * San Diego Naval Station - July 20 - 26
- * San Diego and Coronado Roads area - July 16 - September 2
 - * August 7th Captain William M. Kaufman, USN, relieved Captain Walter L. Phaler, USN, as Commanding Officer.
- * San Diego to Hawaii - September 3 - 11
 - * Pearl Harbor - September 12 - 15
 - * Lahaina Roads, Maui and Kokole Point, Kauai - Operation Clear Ridge, Phiblex 5-60 - September 16 - 24
 - * Pearl Harbor - September 25 - 27
- * Hawaii to San Diego - September 28 - October 5
- * San Diego Naval Station - October 6 - 11
- * San Diego and Long Beach - October 12 - 14
- * San Diego Naval Station - October 15 - 20
- * Camp Pendleton - Operation Eagle Eye - October 21 - 28
- * San Diego Naval Station - October 29 - November 15
- * San Diego Naval Station and Coronado Roads - November 16 - December 31
 - * Dependents' Cruise - December 14

Primary sources for this document

- * A History of the USS Calvert (APA-32), David B. Cullen
- * Calversion, various relevant editions
- * Archival materials, Calvert Marine Museum
- * Interviews, emails, and miscellaneous conversations with former crew members and family members

* Deck Log Books, USS Calvert. When available online at the National Archives Online Catalog

- * January 1959. Online <https://catalog.archives.gov/id/214001891>
- * February 1959. Online <https://catalog.archives.gov/id/214002019>
- * March 1959. Online <https://catalog.archives.gov/id/214002135>
- * April 1959. Online <https://catalog.archives.gov/id/214002263>
- * May 1959. Online <https://catalog.archives.gov/id/214002387>
- * June 1959. Online <https://catalog.archives.gov/id/214002515>
- * July 1959. Online <https://catalog.archives.gov/id/214002639>
- * August 1959. Online <https://catalog.archives.gov/id/214002767>
- * September 1959. Online <https://catalog.archives.gov/id/214002895>
- * October 1959. Online <https://catalog.archives.gov/id/214003019>
- * November 1959. Online <https://catalog.archives.gov/id/182417915>
- * December 1959. Online <https://catalog.archives.gov/id/182418039>

Selected maps and charts

- * NOAA Historic Map Locator <https://www.historicalcharts.noaa.gov/search.php>
- * USGS Historic Map Locator <https://store.usgs.gov/map-locator>
- * UC San Diego Digital Collection, Pacific Basin Nautical Charts <https://library.ucsd.edu/dc/collection/bb0786509m>

Notes

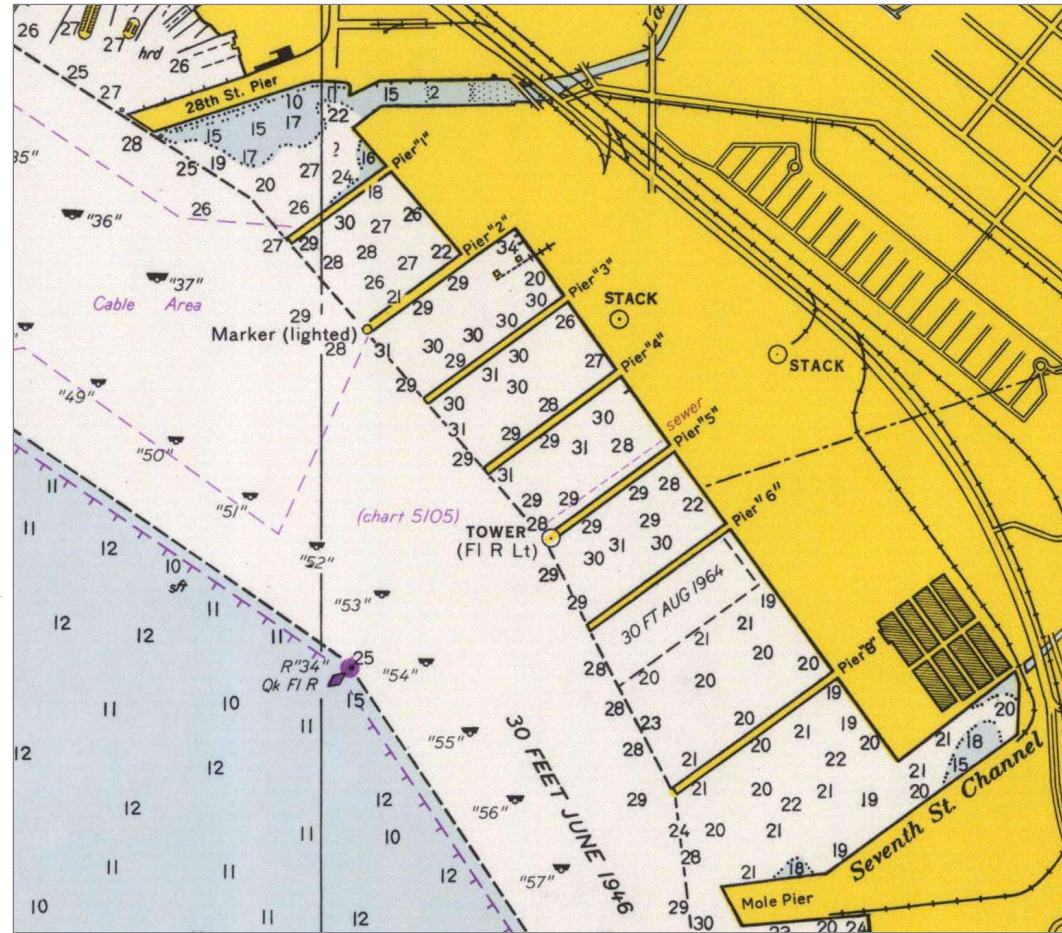
Times All times are in "24-hour" time. For example, 0000 is midnight, 0400 is 4am, ... 1200 is noon, 2000 is 8pm ..., and so on.

Condition One-Alfa refers to active amphibious activities by the crew of the Calvert and the employment of the ship's landing craft in these exercises. This condition is represented by a variety of uses of "one alpha" including One-Alfa, One-Alpha, 1-Alfa, 1-Alpha, and similar. For the most part this document reflects these variations as written in the Calvert's official deck log book.

Accuracy When possible the details are corroborated, and in some cases corrected, by official Naval records. However, not all personal recollections captured in this document are corroborated by official Naval records.

1959	January	1	San Diego Naval Station	<p>0000 'Tis eight bells at midnight, now beginning First watch, new year, a tale worth spinning We're here in Diego, just like before. With mighty ESTES inboard at pier three, berth three four. Secured with doubled lines of hemp As we watch for weather, clouds and temp. In our fine ship our plant is cold But with our watch it's well patrolled. Our deck is covered with miscellaneous gear For all our power is from the pier. We've ships around both far and near With a Korean "T" moored here. Throughout the ship "YOKE" is set To keep our decks from getting wet. COMNAVAIRPAC is the senior "boat" NAS North Island is where he's afloat. The night is clear, the watch is set With one more duty to perform yet. To all our shipmates we heartily say Happy New Year to you, This New Years Day. And to all the Fleet, we hope it tells. As we start the watch with sixteen bells. Signed A.H. Mills, LTJG USNR</p>	Deck Log, USS Calvert, January 1959
1959	January	1 - 18	San Diego Naval Station	<p>Jan 1 - Jan 13 Moored as before, Pier 3, Berths 3-4. Ship in cold iron status.</p> <p>Jan 13 Dispersing officer returned on board with twenty thousand (\$20,000) dollars in United States currency.</p> <p>Jan 14 Lighted number two boiler. Lifted safety valves by hand. Received 15,000 gallons fresh water from the pier. Shifted from pier power to ship's power.</p> <p>Jan 15 Lighted number one boiler.</p> <p>Jan 17 Captain's Personnel inspection. Received 14,000 gallons fresh water from the pier.</p>	Deck Log, USS Calvert, January 1959

Chart of Piers, U.S. Naval Station, San Diego



San Diego Naval Station

An extract of San Diego Bay, #5107
120,000 scale. Soundings in feet.
26th Edition, May 1966
US Coastal and Geodetic Survey

Full chart online
<https://www.historicalcharts.noaa.gov/image.php?filename=5107-5-1966>

1959	January	19	San Diego Naval Station	0000 Moored as before.	Deck Log, USS Calvert, January 1959
			Coronado Roads	Underway in the vicinity of San Diego for various drills and exercises, including a highline exercise with the USS Magoffin in the early afternoon.	
			San Diego Bay	1730 Moored to buoys 47 and 48 in San Diego Bay.	
1959	January	20	San Diego Bay	0000 Moored as before, in San Diego Bay.	Deck Log, USS Calvert, January 1959
			Coronado Roads	Underway off Coronado Roads for amphibious exercises.	
				1930 Anchored Line of Departure, Beach Lane 8, Coronado Roads.	

				0000 Anchored as before, LOD, Beach Lane 8, Coronado Roads.	
1959	January	21	Coronado Roads	<p>0647 - 0830 Experienced low-water casualty in both boilers. 0832 0832 Underway for OP-AREA II-3 1045 - 1120 Exercised at gunnery drills. 1356 Anchored on right flank, Line Of Departure, Beach Lane 8, Coronado Roads. 1404 Away all boats; Commenced amphibious landing exercises. 1545 Amphibious exercises completed; Commenced hoisting in all boats. 1630 Secured from Condition ONE-ALFA</p>	Deck Log, USS Calvert, January 1959
				0000 Anchored on right flank of Line Of Departure, Beach Lane 8, 3800 yards off shore, Coronado Roads, San Diego	
1959	January	22	Coronado Roads	<p>0755 Underway for OP-AREA MM 15. 0801 Steering various courses and speeds standing out of Coronado Roads. 0830 Exercised at general drills. 0915 Secured from all drills.</p> <p>1837 Activated TE-53.5.2.1 (Calvert, Oak Hill, Fort Marion) forming formation D, speed 7.5 knots.</p>	Deck Log, USS Calvert, January 1959

Beach Lane Blue 2, Coronado Roads indicated by black rectangle.

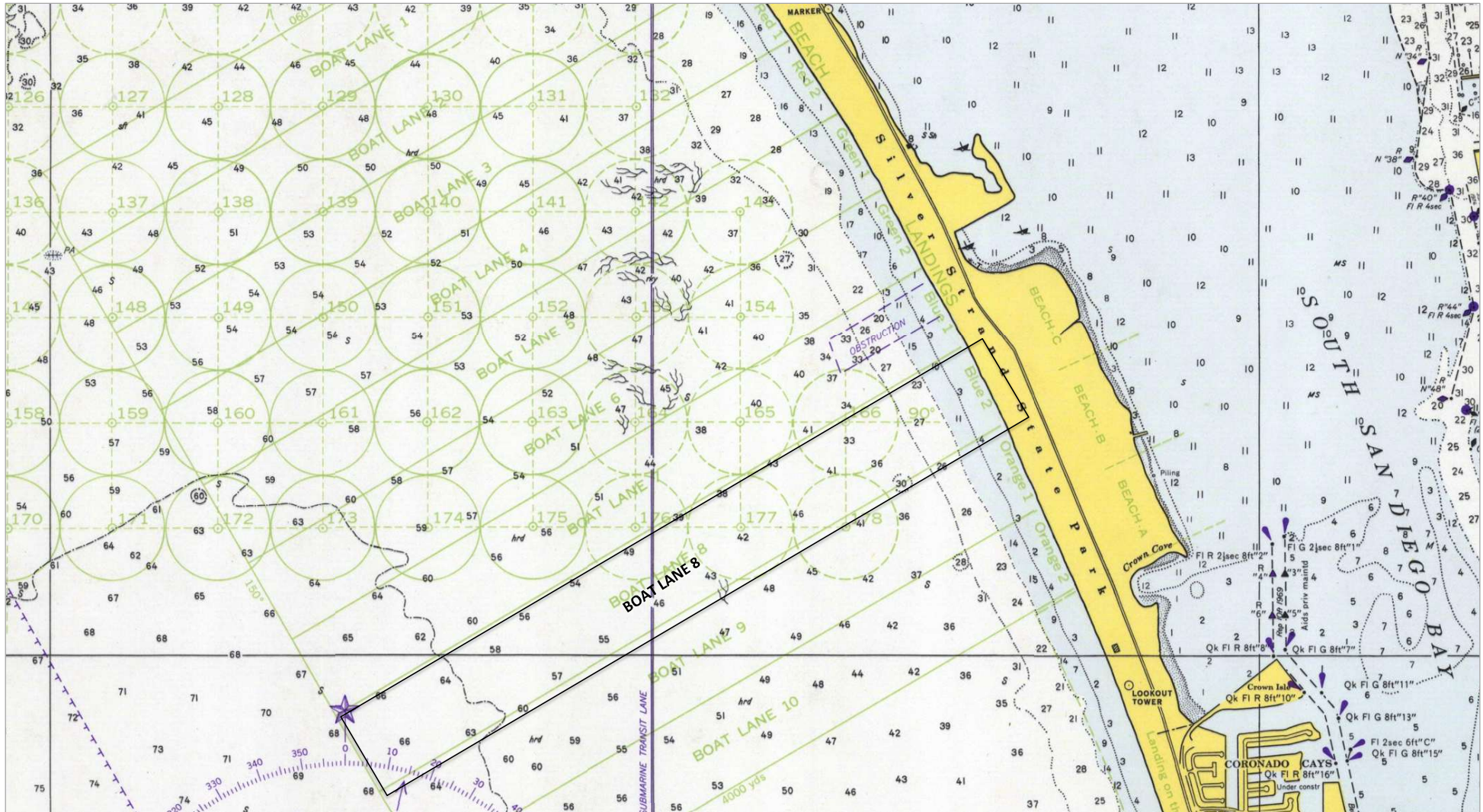
Chart of anchorages, boat lanes, and landing beaches. Coronado Roads, Silver Strand, San Diego, CA.

Editor's note: Presumed to represent the general location of anchorages, boat lanes, and landing beaches of earlier decades.

Extract of: San Diego Bay, #5107. 1:20,000 scale. Soundings in feet. US Coastal and Geodetic Survey, 1974

Online:

<https://www.historicalcharts.noaa.gov/ima.ge.php?filename=5107-5-1974>



1959	January	23	Coronado Roads San Diego Naval Station	<p>0000 Steaming in company with units of TU-53.5.2 in the night steaming area southwest of San Diego, maintaining station 3–5 miles from the point of intended movement on courses between 042° and 082°. Boilers No. 1 and 2 and generators No. 1 and 2 on the line; ship darkened except navigation lights.</p> <p>0355 Steering various courses and speeds to proceed to anchorage A-5; Captain took the conn.</p> <p>0400 Went to general quarters. 0410 Set Condition ONE-ALFA. 0435 Anchored in berth A-5, Coronado Roads, in 10 fathoms of water with 45 fathoms of chain to the port anchor. Bearings Point Loma 314°, Coronado Hotel 357°, Ballast Point 326.4°. 0445 Away all boats. 0448 Secured the special sea and anchor detail; ship remained in Condition ONE-ALFA conducting amphibious exercises. 0940 Secured from Condition ONE-ALFA; set regular sea watch. 1115 Set the special sea and anchor detail. 1127 Underway, steering various courses and speeds standing into San Diego Bay.</p> <p>1307 Moored port side to Pier 1, Berth 14, U.S. Naval Station San Diego, with standard mooring lines doubled.</p>	Deck Log, USS Calvert, January 1959
1959	January	24 - 31	San Diego Naval Station	Moored port side to Pier 1, Berth 14, U.S. Naval Station San Diego, California, with standard mooring lines doubled. Engineering plant in cold-iron status, receiving all services from the pier.	Deck Log, USS Calvert, January 1959
1959	February	1	San Diego Naval Station	As before.	Deck Log, USS Calvert, February 1959
1959	February	2	San Diego Naval Station	<p>0000 Moored port side to berth 14, pier 1, U.S. Naval Station, San Diego.</p> <p>0420 Lighted fires under No. 1 boiler. 0635 Discontinued shore power, placed boiler No. 1 and generator No. 2 on the line.</p> <p>1030 Commenced embarking marine personnel and cargo.</p>	Deck Log, USS Calvert, February 1959
1959	February	3	San Diego Naval Station	<p>0000 Moored as before.</p> <p>1625 COL. D.M. SCHMUCK, USMC with 54 Officers and 612 Enlisted men came aboard in connection with PHIBLEX 12-59</p>	Deck Log, USS Calvert, February 1959

PHIBLEX 12-59 - San Diego & Camp Pendleton - February 3 - 13

On 3 February 1959, the Calvert embarked units of the 5th Marines, 1st Marine Division, and the regimental commander, Colonel D.M. Schmuck, USMC, and sailed for Camp Pendleton to participate in Phiblex 12-59 as a unit of TG 53.5.

Cullen, Page 25

2) February 2 to February 13 The 9th Provisional Marine Brigade consisting of Regimental Landing Team 5, Battalion Landing Team 3/7, and Marine Aircraft Groups 15 and 36 took part in PHIBLEX 12—59 at Camp Pendleton, California.

2) A Chronology of the United States Marine Corps, 1947-1964, Volume III, 1971, Pg 40

3) A devastating nuclear blast, coupled with a 75-helicopter troop air movement. ... USS Thetis Bay was base of operations for the helicopters. "Vertical envelopment" is the moving of combat troops from ship to shore by helicopter. In the nuclear age, the practice is thought to have advantages over beach landings in that troops attacking a beach are more exposed to heavy fire and beach defenses. ... Ships from the Amphibious Task Force were commanded by RAdm. Charles K. Duncan.

3) Repel The Invaders, Naval Aviation News, June 1959, p35

4) From 2 to 10 February 1959, the 9th Marine Provisional Brigade participated in Phiblex 12-59, a large scale amphibious assault on "aggressor held" beaches at Camp Pendleton. VMO-6 OEs directed naval gunfire for the landing.

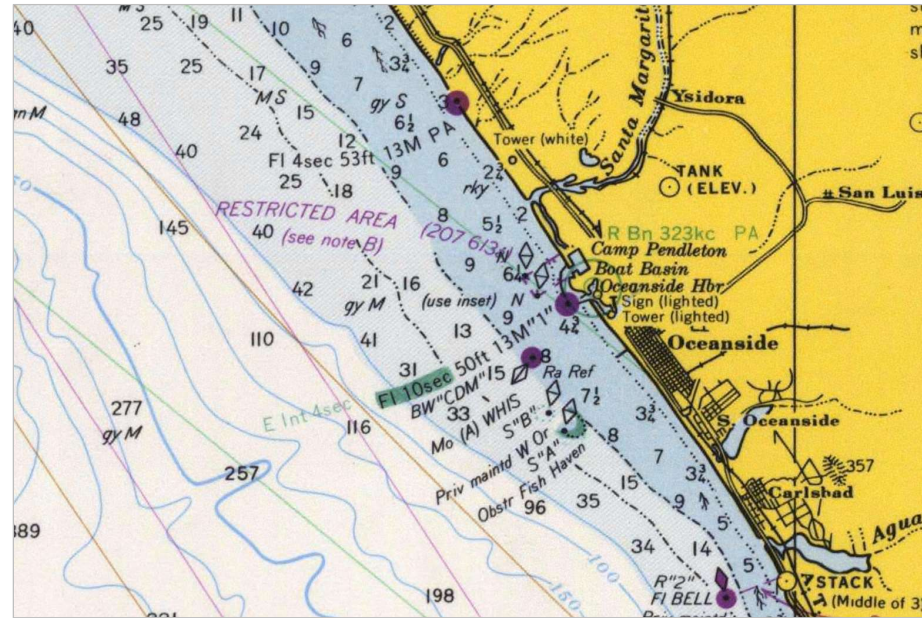
4) A History of Marine Observation Squadron Six, p31

			0000 Moored port side to pier 1, berth 14 U.S. Naval Station San Diego.	
1959	February	4	<p>San Diego Naval Station</p> <p>0545 Commenced making preparations for getting underway. 0630 Lighted fires under No. 1 boiler, and placed on the line.</p> <p>Underway off San Diego</p> <p>0911 Underway for sea to conduct amphibious operations. 1100 CALVERT assumed OTC of Task Element 53.5.3.1 composed of CALVERT and USS OAKHILL (LSD-7). 1314 Commenced type tactics 1537 Completed type tactics.</p> <p>1731 Darkened ship except for shaded stern blue light.</p>	Deck Log, USS Calvert, February 1959

			0000 Steaming in company with units of Task Element 53.5.3.1 (Fast Movement Element Alpha) composed of CALVERT and USS OAK HILL (LSD-7). En route to the rehearsal area in Coronado Roads to conduct rehearsal landing exercise for Operation PHIBLEX 12-59. Other ships of Task Unit 53.5.3 are steaming in the same general area toward the same objective in a radiometric formation maintaining station on PIM. PIM course 068°, speed 12 knots. Ship's course 068°, speed 12 knots. In condition of readiness III (modified) with material condition YOKE set throughout the ship. Ship darkened except for shaded blue stern light. Boilers No. 1 and 2 and generators No. 1 and 3 on the line.	
1959	February	5	<p>Underway off San Diego</p> <p>0045 PIM dissolved; steaming independently to assigned anchorage.</p> <p>Coronado Roads</p> <p>0205 Anchored in berth A-5, Coronado Roads, San Diego, California. Other ships present include units of Amphibious Squadron Five conducting PHIBLEX 12-59. OCE is COMPHIBGRU-ONE in USS PAUL REVERE (APA-248).</p> <p>0310 Went to General Quarters. 0318 Set Condition 1-A. 0341 Away all boats. 0517 Commenced debarking troops and unloading equipment. 0639 First wave touchdown. 0835 Commenced backloading troops and equipment. 0900 Commenced hoisting all boats. 1145 All boats aboard; secured from Condition 1-A.</p>	Deck Log, USS Calvert, February 1959

				0000 Anchored in assigned anchorage, A-5, Coronado Roads.	
				0950 Commenced making all preparations for getting underway. 1006 Underway for sea to conduct amphibious operations. Steering various courses and speeds standing out of Coronado Roads.	
1959	February	6	Coronado Roads Underway off San Diego	1135 Formed Formation ALFA, speed 9 knots; CALVERT guide and OTC in station 1, FORT MARION (LSD-22) in station 2, OAK HILL (LSD-7) in station 3. 1205 Formed Formation DELTA; CALVERT guide and OTC in station 1, FORT MARION in station 2, OAK HILL in station 3, at double standard distance (2000 yards). 1215 Merchantman on bearing 161° closing range on steady bearing. 1237 Merchantman not giving right of way; reduced speed to 10 knots; sounded five short blasts. 1240 Reduced speed to 5 knots; S.S. ARCHANDROS (Liberian, registered Monrovia) crossed bow port to starboard at 500 yards, violating International Rules of the Road and disregarding whistle signals. 1245 Increased speed to 12 knots.	Deck Log, USS Calvert, February 1959
1959	February	6	Underway off San Diego	1423 - 1435 Exercised crew at fire drill; sounded General Quarters. 1503 Exercised crew at General Quarters. 1508 Held abandon ship drill. 1521 Received guard mail by helicopter on the fantail. 1536 Secured from all drills. 1539 Received second shipment of guard mail by helicopter on the fantail. 1743 Darkened ship except shaded stern blue light. 1805 Changed formation to diamond CALVERT station 1, FORT MARION station 2, OAK HILL station 3.	Deck Log, USS Calvert, February 1959
1959	February	7	Underway for Camp Del Mar, Camp Pendelton	0000 Steaming in company with Task Element 53.5.3.1 (CALVERT, FORT MARION, OAK HILL) en route to Coronado Roads and the objective area off Camp Del Mar to conduct Operation PHIBLEX 12-59. In diamond formation with CALVERT guide in station 1, FORT MARION in station 2, OAK HILL in station 3. Steering various courses and speeds keeping station on PIM, speed 12 knots. Other units of TU-53.5.3 in same area in radiometric formation maintaining station on PIM. 0030 PIM dissolved. 0117 Proceeding independently to assigned anchorage 0219 Anchored in berth A-5 off Camp Del Mar in 28 fathoms, mud and sand bottom, with 90 fathoms of chain to the starboard anchor. Bearings Aero Beacon 101.3°; nearest land bearing 055°, range 6200 yards. 0300 Went to General Quarters. 0320 Set Condition 1-A. 0347 Away all boats. 0432 All boats in the water. 0459 Commenced off-loading troops and equipment. Remainder of February 7th Anchored as before in Condition 1-A, unloading troops and equipment. Several LCUs came alongside for loading. 1737 Darkened ship except aircraft warning lights.	Deck Log, USS Calvert, February 1959

Camp Pendleton area



Extract of Extract of U.S. Coast and
Geodetic Survey Map #5101
San Diego to Santa Rosa Island, 1966
1234,270 scale

Original online
https://www.historicalcharts.noaa.gov/imag_e.php?filename=5101-1-1966

0000 Anchored off Camp Del Mar, Oceanside, California, in assigned anchorage A-5. Continuing off-loading. LCUs continue to come alongside for loading.

1315 Relocated to administrative anchorage B-12.

1753 Set Sneak Attack Drill.

2020 Sighted swimmer off starboard bow; illuminated with searchlight; swimmer submerged.

2110 Sighted swimmer off starboard bow again.

2113 Three UDT swimmers came aboard.

2150 UDT boat picked up the three swimmers to return to parent ship.

2230 Secured Anti-Sneak Attack watch; hoisted staff motorboat to rail.

2247 Veered chain to 90 fathoms on deck; passed two stoppers; set anchor watch.

Wind 20–30 knots from the north; seas 8–10 feet.

Commenced maintaining plot in CIC to monitor for dragging by this ship or adjacent ships.

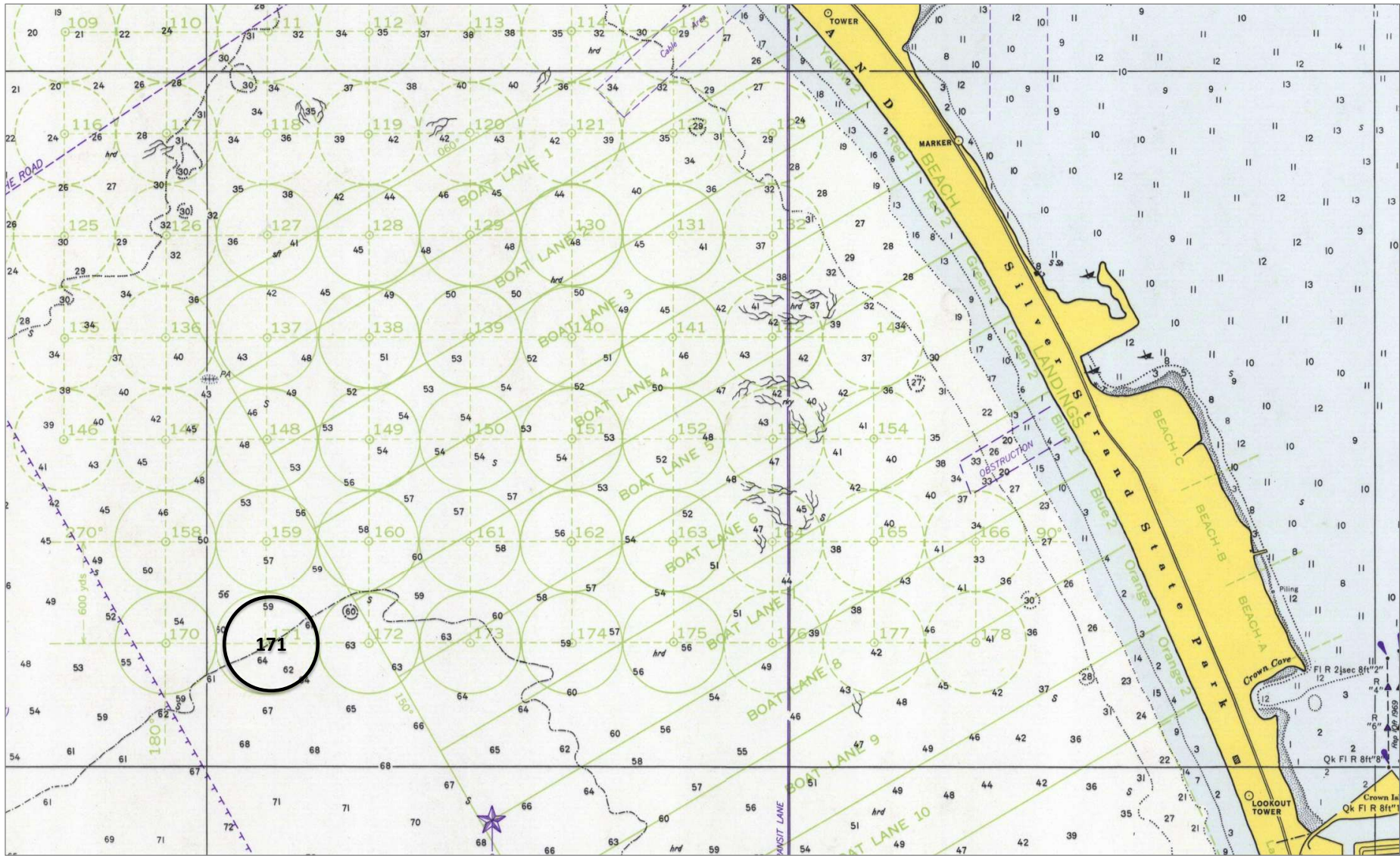
1959 February 8 Camp Pendleton

Deck Log, USS Calvert, February
1959

				0000 Anchored in anchorage B-12 off Camp Del Mar, Oceanside, California, conducting PHIBLEX 12-59.	
1959	February	9	Camp Pendelton	0846 Went to General Quarters; set Material Condition ZEBRA. 0855 Lighted off steering engines. 0910 Commenced spinning main engines. 0930 Completed off-loading. 0945 Set Condition ONE-ALFA. 0954 Set Condition YOKE. 1025 Placed engine room on one-hour notice. 1042 Secured from Condition ONE-ALFA. 1733 Darkened ship except for aircraft warning lights; set Anti-Sneak Attack watch. 2007 Secured Anti-Sneak Attack watch.	Deck Log, USS Calvert, February 1959
1959	February	10	Camp Pendelton Underway to San Diego	0000 Anchored in anchorage B-12, Camp Pendleton. 1800 Commenced preparations for getting underway. 1815 Tested main engines with steam. 2143 Underway for San Diego, California, steaming independently by magnetic compass (master gyro inoperative)	Deck Log, USS Calvert, February 1959
1959	February	11	Underway to San Diego San Diego Naval Station	0000 Steaming as before, for San Diego. 0154 Anchored in berth 300, North San Diego Bay. 0848 Underway shifting berths to Pier 4, 1022 Moored port side to Pier 4, Berth 46, U.S. Naval Station San Diego	Deck Log, USS Calvert, February 1959
1959	February	12 - 23	San Diego Naval Station	0000 Moored port side to pier 4, berth 46, U.S. Naval Station, San Diego, California. Engineering plant in cold iron status.	Deck Log, USS Calvert, February 1959
1959	February	24	San Diego Naval Station Underway off San Diego Coronado Roads	0000 Moored port side to Pier 4, Berth 46, U.S. Naval Station San Diego. 0600 Lighted fires under No. 2 boiler. 0800 COMPHIBRON FIVE hauled down pennant and shifted to USS FORT MARION (LSD-22). 0830 Commenced preparations for getting underway. 0930 Underway per COMPHIBRON FIVE employment order. 1140 Commenced engineering drills. 1148 Completed engineering drills. 1329 Commenced Gunnery Exercise Z-1-G. 1343 Completed Gunnery Exercise Z-1-G; expended 104 rounds 40mm BL&T. 1447 Maneuvering on various courses and speeds conducting damage control and steering casualty drills. 1607 Held abandon ship drill. 1631 Secured from all drills. 1732 Anchored in anchorage 171, Coronado Roads, San Diego.	Deck Log, USS Calvert, February 1959

Chart of anchorages, boat lanes, and landing beaches. Coronado Roads, Silver Strand, San Diego, CA.
Editor's note Presumed to represent the general location of anchorages, boat lanes, and landing beaches of earlier decades.

Chart Extract from the 1974 U.S. Coast and Geodetic Survey chart of San Diego Bay. 120,000



1959	February	25	Coronado Roads San Diego Bay	<p>0000 Anchored in anchorage 171, Coronado Roads, San Diego.</p> <p>0415 Lighted fires under No. 1 boiler. 0728 Underway in accordance with COMPHIBRON FIVE employment schedule. 0737 Speed 15 knots en route OPAREA MM15. 0905 Conducted Man Overboard drill; maneuvered at various courses and speeds for recovery. 0936 Secured from Man Overboard drill; set course 320°, speed 15 knots. 0937 Exercised crew at General Quarters; Condition ZEBRA set. 1146 Secured from General Quarters.</p> <p>1250 Steering various courses and speeds standing into San Diego Bay. 1340 Anchored in berth 301, San Diego Bay.</p>	Deck Log, USS Calvert, February 1959
1959	February	26	San Diego Bay Coronado Roads	<p>0000 Anchored in berth 301, San Diego Bay. 0500 Lighted fires under No. 2 boiler. 0630 Made all preparations for getting underway; set Material Condition YOKE. 0645 Set the special sea and anchor details; Captain and Navigator on the bridge; OOD has the conn. 0705 Underway per COMPHIBRON FIVE employment schedule, en route to Coronado Roads. 0745 Passed into international waters. 0757 Anchored in anchorage 160, Coronado Roads 0825 Exercised crew at General Quarters; set Condition ZEBRA. 0825 Set Condition ONE-ALFA. 1135 Secured from Condition ONE-ALFA. 1345 Set Condition of Readiness ONE-ALFA; commenced amphibious exercises.</p>	Deck Log, USS Calvert, February 1959
1959	February	27	Coronado Roads San Diego Naval Station	<p>0000 Anchored in anchorage 160, Coronado Roads. 0315 Lighted fires under No. 1 boiler. 0531 Underway en route OPAREA VV6. 0830 Set Condition ZEBRA. 0840 Steering various courses and speeds running measured mile. 1006 Secured from all drills; set Condition YOKE. 1135 Changed speed to 17 knots. 1215 Changed speed to 12 knots. 1320 Exercised crew at General Quarters; conducted damage control and engineering drills while maneuvering at various courses and speeds. 1422 Secured from all drills. 1445 Steering various courses and speeds standing into San Diego Bay. 1614 Moored port side to pier 4, berth 46, U. S. Naval Station, San Diego. 1700 COMPHIBRON FIVE shifted his pennant from U.S.S FORT MARION (LSD-22) to U.S.S. CALVERT (APA-32).</p>	Deck Log, USS Calvert, February 1959
1959	February	28	San Diego Naval Station	0000 Moored port side to pier 4, berth 46, U. S. Naval Station, San Diego.	Deck Log, USS Calvert, February 1959
1959	March	1	San Diego Naval Station	0000 Moored port side to pier 4, berth 46, U. S. Naval Station, San Diego.	Deck Log, USS Calvert, March 1959

0000 Moored port side to Pier 4, Berth 46, U.S. Naval Station, San Diego.

0841 Underway for sea, commenced various courses and speeds standing out of San Diego Bay.

1025 Went to General Quarters.

1026 Making degaussing speed, 13 knots.

1124 Passed final position of degaussing run.

1125 Exercising with units of TG 10.1; formed Formation 51, speed 13 knots.

1145 Sighted torpedo trail passing ahead, 450 yards port to starboard.

1210 Commenced zigzagging per Plan 115.

1227 Set Material Condition YOKE.

1238 Secured from General Quarters.

1256 Ceased zigzagging, speed 13 knots.

1300 Opposed sortie completed; proceeding independently to conduct trials.

1314 Went to General Quarters to conduct practice battle problem.

1400 Commenced practice battle problem.

1506 Commenced various courses and speeds standing into San Diego Harbor.

1603 Anchored in Berth 208, San Diego Harbor

Deck Log, USS Calvert, March
1959

1959 March 2 Underway,
Coronado Roads
San Diego Harbor

0000 Anchored in anchorage 208, San Diego.

0645 Commenced preparations for getting underway.

0708 Underway for sea.

0700 Commenced sounding fog signals; visibility 1 mile due to fog.

0749 Ceased sounding fog signals.

1020 Commenced Battle Problem; steering various courses and speeds to conform.

1055 Ceased Battle Problem.

1249 Steering various courses and speeds to maneuver for Gunnery Exercise Z-28-G.

1321 Commenced firing.

1338 Completed firing.

1350 Commenced firing.

1355 Completed firing.

1443 Completed Gunnery Exercise Z-28-G.

1445 Secured from General Quarters. Ammunition expended 36 rounds 3"/50 BL&P projectiles, 12 rounds 3"/50 BL&T projectiles.

1703 Secured from all drills.

1855 Anchored in anchorage 208, San Diego, California.

Deck Log, USS Calvert, March
1959

1959 March 3 Underway,
Coronado Roads
San Diego Harbor

				0000 Anchored in anchorage 208, San Diego.	
				0600 Made all preparations for getting underway. 0641 Underway to assigned operating area. 0950 Went to General Quarters for ORI; CO USS MAGOFFIN (APA-199) is Assistant Chief Observer for Combat Battle Problem. Condition ZEBRA set; commenced steering various courses and speeds to simulate casualties and battle tactics.	
1959	March	4	San Diego Harbor Underway, Coronado Roads San Diego Bay	1130 Problem completed; went to Abandon Ship stations for ORI. 1137 Secured from Abandon Ship stations; re-manned General Quarters stations. 1235 Secured from General Quarters; set Condition IV. 1342 Went to General Quarters. 1400 Commenced Gunnery Exercise 7-4-4. 1428 Secured from General Quarters. Ammunition expended 171 rounds 40mm RLOT. 1431 Steaming various courses and speeds to pick up sleeve from Gunnery Exercise. 1449 Sleeve recovered. 1530 Commenced full power run; building up to full power; steaming at various speeds. 1600 Commenced making full power. 1715 Completed full power run; commenced deceleration. 1933 Anchored in anchorage 208, San Diego Bay.	Deck Log, USS Calvert, March 1959
1959	March	5	San Diego Bay Underway, Coronado Roads San Diego Naval Station	0000 Anchored in anchorage 208, San Diego. 0724 Underway from anchorage. 0815 Set Condition ONE-ALFA. 0831 Set General Quarters. 0900 Steering various courses and speeds standing into Coronado Roads; Condition ONE-ALFA set. 0923 Anchored near LOD, Beach Lane 2, Coronado Roads. 1346 Secured from Condition ONE-ALFA. 1355 Underway from assigned anchorage to San Diego Bay. 1620 Moored port side to Pier 4, Berth 46, U.S. Naval Station San Diego.	Deck Log, USS Calvert, March 1959
1959	March	6 - 16	San Diego Naval Station	Moored port side to Pier 4, Berth 46, U.S. Naval Station San Diego. The ship is in a cold iron status.	Deck Log, USS Calvert, March 1959
				0000 Moored port side to Pier 4, Berth 46, U.S. Naval Station San Diego. 0800 COMPHIBRON FIVE hauled down pennant and departed on 3 days leave; Admin remains aboard.	
1959	March	17	San Diego Naval Station Underway, Coronado Roads San Diego Harbor	0908 MGNL Waldemar P. Bredster, USMC, and 26 Amphibious School students came aboard. 0943 Underway per COMPHIBRON FIVE employment schedule en route to Beach Lane 2, Coronado Roads. 1122 Anchored Left Flank, L.O.B., Beach Lane 2, Coronado Roads 1205 Set Condition 1-Alpha; commenced amphibious operations for NAVPHIBSCHOOL class P-1225. 1428 Commenced hoisting all boats aboard. 1507 All boats hoisted aboard. 1508 Secured from Condition 1-Alpha. 1606 Anchored in Anchorage 208, San Diego Harbor.	1) Deck Log, USS Calvert, March 1959 2) Cullen, Page 25
				2) On 17 March 1959, with Major General Waldemar F. Bredster, USNG, Commanding General 32nd National Guard Division, Wisconsin National Guard, embarked, the Calvert was employed as Phibpac School Ship.	

				0000 Anchored in anchorage 208, San Diego, California.	
1959	March	18	San Diego Harbor Underway, Coronado Roads San Diego Harbor	0815 Anchor away; Captain and Navigator on the bridge. Underway per COMPHIBRON FIVE employment schedule, proceeding independently to OpArea SS-2. Steering various courses and speeds standing out of anchorage 208. 1011 All engines stopped; lowered LCVP No. 14 into the water. 1025 Steering various courses and speeds to conduct tactical data analysis. 1029 Commenced tactical data analysis. 1206 Ceased tactical exercises. Commenced steaming various courses at 4 knots to remain in OpArea SS-2. 1250 Commenced steaming various courses and speeds while taking tactical data, using LCVP No. 14 as reference point. 1544 Completed tactical data collection; maneuvering to hoist in LCVP No. 14. 1610 LCVP No. 14 hoisted in. 1736 Anchored in Berth 211, San Diego Bay	Deck Log, USS Calvert, March 1959
1959	March	19	San Diego Harbor Underway, Coronado Roads San Diego Naval Station	0000 Anchored in anchorage 211, San Diego Harbor. 0756 Underway; proceeding independently to practice mooring buoys, Coronado Roads. 0852 Commenced rubber docking drill to practice mooring buoys, Coronado Roads. 1401 Conducted man overboard drill. 1416 Secured from man overboard drill. 1603 Commenced steering various courses and speeds to enter port; Captain and Navigator on the bridge. 1603 Sounded five short blasts as USS KOKA (ATA-185) with tow crossed bow from port to starboard. 1605 Altered course to starboard; slowed to one-third ahead to avoid closing with KOKA and tow. 1606 All engines back two-thirds; sounded three short blasts to give USS P.F. LEADER (LST MECHANIZED) right of way. LEADER crossed bow from starboard to port, 450 yards. 1610 Continued steering various courses and speeds through channel. 1739 Moored port side to Pier 4, Berth 46, U.S. Naval Station, San Diego.	Deck Log, USS Calvert, March 1959
1959	March	20	San Diego Naval Station	0000 Moored port side to Pier 4, Berth 46, U.S. Naval Station, San Diego. 0900 Captain Merle F. Bonham, USN, reported aboard per BuPers order 058329 of 20 Nov 1958, for duty with COMPHIBRON FIVE Staff and as relief of Captain J.G. Spangler, USN. 1816 Cut in shore steam; receiving all services from pier. Engineering plant placed in cold iron status.	Deck Log, USS Calvert, March 1959
1959	March	21	San Diego Naval Station	0000 Moored as before. 0900 All Enlisted Reserve personnel completed active duty training and were detached from this command.	Deck Log, USS Calvert, March 1959
1959	March	22 - 31	San Diego Naval Station	Moored as before. The engineering plant in cold iron status.	Deck Log, USS Calvert, March 1959
1959	April	1	San Diego Naval Station	Moored as before. The engineering plant in cold iron status.	Deck Log, USS Calvert, April 1959

Moored as before.

1959	April	2	San Diego Naval Station	0915 Commenced embarking main body of Marine Corps personnel for operation "BIG LAND" 1425 Col. J.H. Masters, USMC, Commanding Officer 4th Marine Regt. Reported aboard with the last of Marine Corp personnel. Total USMC personnel embarked, 23 Officers and 290 Enlisted.	Deck Log, USS Calvert, April 1959
------	-------	---	-------------------------	---	-----------------------------------

Phiblex 15-59, Operation Big Land - April 2 - 8 - San Diego, Coronado Roads, and Camp Pendleton

1) On 2 April, units of the 4th Marines, 1st Marine Brigade, commanded by Colonel John H. Masters, USMC embarked and the Calvert sailed to participate as a unit of TG 53.6 in Phiblex 15-59, Operation Big Land at Camp Pendleton.

2, 3, 4) Operation Big Land included 25 ships, 5,500 Navy men and 5,500 Brigade Marines in an exercise designed "to improve the professional skills of Navy and Marine personnel in the conduct of amphibious warfare in the nuclear age." During the exercise a fully equipped Brigade Marines participated in "the vertical envelopment assault landings from the helicopter aircraft carrier Thetis Bay."

1) Cullen, Page 25

2) [Brigade Begins Embarkation For Camp Pendleton Landing](#), Windward Marine, March 6, 1959, p1

3) [1st Brigade Embarks For Camp Pendleton](#), Windward Marine, March 13th, p1

4) [Maneuvers](#), Windward Marine, March 6th, p4

Sources for Operation Big Land, April of 1959

* Windward Marine, Vol VIII, No 10, March 6, 1959, p1 - available online at https://static.dvidshub.net/media/pubs/pdf_16826.pdf
Brigade Begins Embarkation For Camp Pendleton Landing, pp1
Maneuvers, Windward Marine, March 6th,

* Windward Marine, Vol VIII, No 11, March 13, 1959 - available online at https://static.dvidshub.net/media/pubs/pdf_16828.pdf
1st Brigade Embarks For Camp Pendleton, pp1

* Windward Marine, Vol VIII, No 14, Friday, April 3, 1959 - available online at https://static.dvidshub.net/media/pubs/pdf_16833.pdf
Big Land Forces Hit Beaches Mon., pp1

* Windward Marine, Vol VIII, No 15, Friday, April 10, 1959 - available online at <https://static.dvidshub.net/media/pubs/16835>
K-Bay Troops End Big Land Exercises, pp1, 2

1959	April	3	San Diego Naval Station Underway off Coronado Roads	<p>0000 Moored port side to Pier 4, Berth 46, U.S. Naval Station San Diego.</p> <p>0600 Lighted fires under Boiler No. 2.</p> <p>0800 Commenced preparations for getting underway.</p> <p>0854 Underway per COMPHIBGRU ONE OP as unit of Task Group 53.6 to conduct PHIBLEX 5-59, Operation BIG LAND.</p> <p>1000 Formed Formation Alfa USS SKAGIT (AKA-105) in station 1 (guide); USS MAGOFFIN (APA-199) in station 2; USS UNION (AKA-106) in station 3; USS MONTROSE (APA-212) in station 5; USS OAK HILL (LSD-7) in station 5; CALVERT in station 6; USS MONTICELLO (LSD-35) in station 7; USS FORTORD (LSD-26) in station 8 1202 CALVERT assumed guide in formation.</p> <p>1226 Commenced zigzagging per Zigzag Plan 20-S; base course 270°, speed 12 knots 1300 Commenced tactical exercises; ceased zigzagging; maneuvering on various courses and speeds. 1700 Commenced steering sinuous courses, CAM 5; base course 180° 1745 Changed speed and formation to 10 knots 1814 Darkened ship except stern white light 1815 Ceased sinuous courses; completed tactical exercises</p>	Deck Log, USS Calvert, April 1959
1959	April	4	Underway off Coronado Roads Coronado Roads	<p>0000 Steaming in company with Task Force 53.6.1 (fast movement element Alfa), en route San Diego to rehearsal area off Coronado Roads (Silver Strand) for Operation BIG LAND rehearsals. Other elements of TU 53.6.3 maneuvering in same general area. Ship darkened except screened stern light.</p> <p>0217 Anchored in anchorage A-6, Coronado Roads. 0300 Went to General Quarters. 0309 Set Condition 1-Alpha for landing exercise. 0329 Away all boats. 0410 All boats in the water. 0600 Observed H-hour, R-day. 0630 Commenced hoisting boats; completed by 0730. 1045 Secured from Condition 1-Alpha. 1559 Anchor aweigh; underway per COMPHIBRON ONE OpOrder 306-59 en route from Coronado Roads rehearsal area to objective area Camp Pendleton for Operation BIG LAND. 1652 Formed fast movement elements A, B, and C. Element A (TF 53.6.3.1) in column sequence – CALVERT (APA-32) station 1 (guide), – GEORGE CLYMER (APA-27) station 2, – MONTICELLO (LSD-35) station 3, – VERNON COUNTY (LST-1161) station 4. Standard distance 1000 yards from guide. 1813 Darkened ship except for screened stern light.</p> <p>2) Rehearsals off Coronadoon April 4th.</p>	<p>1) Deck Log, USS Calvert, April 1959</p> <p>2) <u>Big Land Forces Hit Beaches Mon., #14, Friday, April 3, 1959, p1</u></p>

				0000 Steaming in company with units of TE 53.6.3.1 (fast movement element Alfa), en route from Coronado Roads to assault area off Camp Pendleton for landing exercise in Operation BIG LAND. CTG 53.6.3.1 is COMPHIBRON FIVE in CALVERT. Other TU 53.6.3 elements maneuvering in same area. Ship darkened except screened stern light.	
				0658 Formed diamond formation in sequence order.	
1959	April	5	Underway off Camp Pendleton	0820 Commenced tactical exercises; steering various courses and speeds. 1200 - 2000 Conducting tactical exercises on various courses and speeds. 1600 Observed unusual magnetic variation 4°L to 0° between San Nicolas Island and San Clemente Island. Approximate position 33°00'N, 119°01'W. 1818 Darkened ship except screened stern light. 2051 Turned on all navigational lights except stern light.	Deck Log, USS Calvert, April 1959
				0000 Steaming in company with Task Element 53.6.3.1 (Fast Movement Element ALFA), en route from Coronado Roads to assault area off Camp Pendleton for Operation TRIP LAND.	
1959	April	6	Underway off Camp Pendleton Camp Pendleton	0143 Dissolved TE 53.6.3.1; all ships proceeding independently. 0223 Captain took the conn. 0246 Anchored in anchorage A-6 off Camp Pendleton 0301 Secured special sea and anchor detail. 0303 Set Condition 1-Alpha. 0305 Let fires die under Boiler No. 2. 0317 Away all boats. 0345 All boats in the water. 0555 Commenced offloading cargo and equipment. 0600 Observed H-hour, D-day.	Deck Log, USS Calvert, April 1959
				"In the early hours of the landing exercises on Monday (6th) about 3,000 Marines made the beach assault from landing craft. A battalion of troops, heli-lifted from the decks of Thetis Bay, landed in interior positions. The vertical envelopment was designed to hold key positions for eventual linkup with the amphibious assault troops later in the exercise.	
1959	April	6	Camp Pendleton	Operation Big Land is the second large-scale amphibious exercise to be held on the California coast this year. It was designed to improve the professional skills of Navy and Marine personnel in the conduct of amphibious warfare in the atomic age. Big Land assumed a "brush fire" situation which could be typical of a mission assigned an amphibious task force. The objective; to land, seize, occupy and defend a fictitious island for development into a base for further operations against an enemy mainlane. Emphasis in the exercise was on the coordinating of assault by surface and helicopter-born troops, to their objectives. Prior to the landing Navy frogmen cleared the boat lanes and beaches of obstacles."	<u>K-Bay Troops End Big Land Exercises</u> , #15, Friday, April 10, 1959, p1

1959	April	6	Camp Pendleton	1700 Commenced hoisting in LCVPs. 1812 Darkened ship except aircraft warning lights. 1918 Completed hoisting LCVPs; secured from Condition 1-Alpha. 2305 Class C fire reported in the Engine room. 2310 Fire under control in compartment B-2-E. 2316 Fire out.	Deck Log, USS Calvert, April 1959
1959	April	7	Camp Pendleton	0000 Anchored as before. Ship darkened except aircraft warning lights. Continuing Operation BIG LAND. 1930 Carried out Anti-Sneak Attack Bill in preparation for scheduled sneak attack exercise.	Deck Log, USS Calvert, April 1959
1959	April	8	Camp Pendleton Underway to San Diego San Diego	0000 Anchored as before. Ship darkened except aircraft warning lights. Continuing Operation BIG LAND. 0010 Secured from anti-sneak attack drill. 0843 Underway to shift berths to anchorage between Red and White Beach. 0912 Anchored 300 yards from beach in assault area off Red Beach, Camp Pendleton. 1220 Underway for San Diego. 1805 Moored starboard anchor chain to buoys 47 and 48, San Diego Harbor. 1930 Carried out Anti-Sneak Attack Bill in preparation for scheduled sneak attack exercise.	Deck Log, USS Calvert, April 1959
1959	April	9 - 30	San Diego Harbor & Naval Station	April 9 - 16 Moored, buoys 47 and 48, San Diego Harbor. April 16 Relocated to Pier 4, Berth 46, U.S. Naval Station, San Diego. The engineering plant was placed in a cold iron status.	Deck Log, USS Calvert, April 1959
1959	May	1 - 17	San Diego Naval Station	May 8 Captain's inspection of lower decks 1300 to 1450. May 12 and 13 Administrative party from the USS Seminole came aboard for a series of inspections. May 15 COMPHIBRON FIVE hauled down his pennant in this vessel and broke his pennant in the USS Paul Revere (APA_248). All Officers and Enlisted men of COMPHIBRON FIVE's staff were transferred to the USS Paul Revere. May 16 Conducted static and dynamic tests of after thirty ton boom and vang. May 17 Shifted berths to berth "N" at U.S. Naval Air Station, San Diego. Loaded ammunition and medical supplies into No. 2 hold. Shifted berths to berth 46, U.S. Naval Station, San Diego.	Deck Log, USS Calvert, May 1959

Phiblex 17-59, Operation Twin Peaks - May 18 to June 2 - San Diego, Coronado Roads, and Camp Pendleton

1) On 20 May, the Calvert, again combat-loaded, embarked Brigadier General Thomas F. Riley, USMC, Assistant Division Commander, 1st Marine Division, and his staff, and returned to Camp Pendleton to conduct Phiblex 17-59, Operation Twin Peaks as a unit of TG 11.4.

2) Twin Peaks got underway Thursday, May 28 off the coast of the southern California coast and ended June 5th. Twin Peaks was the largest amphibious maneuvers conducted by the Navy and Marines since January 1956, on the West Coast.

3) 60 ships and 25,000 Marines participated in the exercise.

4) PHIBLEX 17-59 "Various new concepts in war were viewed with interest ... included mass helicopter movements of troops and equipment, and simulated atomic weapon explosions."

1) Cullen, Page 25

2) Brigade Marines In 'Twin Peaks' Aggressor Role, P1, June 5, 1959
Windward Marine, Vol VIII, No 23, June 5, 1959 - available online at
https://static.dvidshub.net/media/pubs/pdf_16850.pdf

3) Twin Peaks Exercise' Tests Copter-Carrying Princeton. Windward Marine, Vol VIII, No 21, Ma 22, 1959 - available online at
https://static.dvidshub.net/media/pubs/pdf_16846.pdf

4) Afloat and Ashore, Pacific Command, Second Canadian Escort Squadron - Crowsnest, Volume 11, No 10, August 1959, p18

1959	May	18	San Diego Naval Station	0000 Moored port side to pier 4, berth 46, U.S. Naval Station, San Diego. 1145 Commenced loading equipment for exercise Twin Peaks.	Deck Log, USS Calvert, May 1959
1959	May	19	San Diego Naval Station Underway off San Diego	0000 Moored as before. 1140 Completed loading vehicles and equipment for Operation TWIN PEAKS. 1338 Brigadier General T.F. Riley, USMC, came aboard with 50 officers and 269 enlisted personnel. 1350 Made all preparations for getting underway. 1431 Underway per CTU 11.4.3 (COMPHIBRON FIVE) sortie plan and CTG 11.4 (COMPHIBGRU ONE) to conduct PHIBEX 17-59, Exercise TWIN PEAKS. 1944 Darkened ship except navigation and wake lights.	Deck Log, USS Calvert, May 1959

1959	May	20	Underway off San Diego	<p>0000 Steaming in company with TU 11.4.3 (fast movement unit Charlie), en route from San Diego to sea for Operation TWIN PEAKS (PHIBEX 17-59). Ship darkened except screened stern blue light. Other units TU 11.3 and COMPHIBRON FIVE in PAUL REVERE; CTU 11.4.5 is COMPHIBRON ONE in ELDORADO; CTF 11 is COMPHIBPAC in GEORGE CLYMER (APA-27).</p> <p>0900 USS PRINCETON (LPH-5) helicopter reported sonar contact bearing 18A, range 2000 yards; TU 11.4.1 units commenced tracking.</p> <p>0943 Commenced sinuous course CAM 5.</p> <p>1030 Sighted white smoke flare bearing 195°, range 7000 yards</p> <p>1035 Sighted green flare bearing 190°, range 3000 yards; sounded General Quarters; set Condition ZEBRA.</p> <p>Captain took the conn.</p> <p>1038 Sighted torpedo off starboard side No. 4 hold</p> <p>1039 Sighted periscope off starboard quarter bearing 220°, range 2000 yards</p> <p>1040 speed 5 knots; left rudder to assess simulated torpedo damage</p> <p>1041 Condition ZEBRA set throughout</p> <p>1048 speed 12 knots; maneuvering to regain station A-2</p> <p>1056 Sighted floating object portside; simulated hit between frames 135–140, 3'x9' hole, flooding to second platform</p> <p>1114 speed 15 knots</p> <p>1116 Sighted floating object bearing 200°, range 1000 yards</p> <p>1127 Set Condition YOKE throughout</p> <p>1129 Secured from General Quarters</p>	Deck Log, USS Calvert, May 1959
1959	May	20	Underway off San Diego	<p>1139 Speed 16 knots</p> <p>1207 Commenced sinuous course CAM 5, base course 270°, speed 12 knots</p> <p>1355 Exercised crew at General Quarters</p> <p>1401 Set Condition ZEBRA throughout</p> <p>1459 Simulated atomic air burst on surface bearing 220°, range 3200 yards</p> <p>1507 Commenced sinuous course CAM 5, F185base course 090°, speed 12 knots</p> <p>1517 Set Condition I-Alpha</p> <p>1518 Held abandon ship drill. 1541 Secured from abandon ship drill</p> <p>1546 Set Condition YOKE throughout.</p> <p>1559 Sighted unidentified white smoke flare, range 2000 yards.</p> <p>1946 Darkened ship.</p>	Deck Log, USS Calvert, May 1959
1959	May	21	Underway off San Diego	<p>0000 Steaming in company with TU 11.1.3 (fast movement unit Charlie), maneuvering at sea per CTG 11.1 (COMPHIBRON ONE) OpOrder 307-59 for Exercise TWIN PEAKS (PHIBRIX 17-59). Formation circular 5.0 PAUL REVERE (APA-248) — guide, station 0; MAGOFFIN (APA-199) — station A-1; CALVERT — station A-2; MONTROSE (APA-212) — station A-3; SEMINOLE (AKA-104) — station A-4; SKAGIT (AKA-105) — station A-5; WHETSTONE (LSD-27) — station A-6 Circle spacing 13,000 yards. Speed 14 knots Other TG 11.1.4 units in area maintaining station.</p> <p>0925 Passed through large oil slick at Lat. 32°19.5'N, Long. 118°08.0'W</p> <p>1846 Set EmCon Condition Delta</p> <p>2013 Set EmCon Condition Bravo</p> <p>2056 Formed column formation PAUL REVERE, MAGOFFIN, SKAGIT, SEMINOLE, MONTROSE, CALVERT, WHETSTONE</p> <p>2352 Turned off navigational lights except screened stern blue light</p>	Deck Log, USS Calvert, May 1959

1959	May	22	Underway off San Diego	<p>0000 Steaming in company with TU 11.1.4.3 (fast movement unit Charlie), en route from sea to rehearsal area off Coronado, California, for Exercise TWIN PEAKS (PHIBLEX 1-59) per CTF 11.1 OpOrder 307A-59. Column formation PAUL REVERE (APA-248) — station 1; MOUNT MCKINLEY (AGC-7) — station 2; SKAGIT (AKA-105) — station 3; SEMINOLE (AKA-104) — station 4; MONTROSE (APA-212) — station 5; CALVERT — station 6 – WESTON (LSD-27) — station 7;</p> <p>0002 Reduced formation spacing to 1000 yards 0030 Increased spacing to 2000 yards. 0138 CALVERT detached from TU 11.1.3, proceeding independently. 0244 Set Material Condition ZEBRA 0245 Set Condition I-Alpha 0252 Lowered designated boats to rail 0257 Away all boats 0335 Secured from Condition I-Alpha; reset special sea and anchor detail 0340 Completed offloading boats; proceeding independently to sea-echelon area 0507 Turned off navigational lights except screened stern blue light. 0725 Joined TU 11.1.4; took station 5 in column formation Guide USS WESTON — station 1; SEMINOLE — station 2; MONTROSE — station 3; MAGOFFIN — station 4; CALVERT — station 5; PICKAWAY — station 6; SKAGIT — station 7 Standard distance 2500 yards 0920 Speed 12 knots. Proceeding independently in wake of guide to rehearsal/admin area. 1100 Anchored in Anchorage A-10, Coronado Roads, San Diego</p>	Deck Log, USS Calvert, May 1959
1959	May	22	Underway off San Diego	<p>1720 Underway for sea as a unit of TU 11.4 per COMPHIBGRU ONE. 1820 Commenced forming Formation 57C Guide USS PAUL REVERE, station 0, bearing 010°, 3000 yards Stations MAGOFFIN (A-1); CALVERT (A-2); MONTROSE (A-3); SEMINOLE (A-4); SKAGIT (A-5); WEIMAR (A-6); ELDORADO (AGC-11) (A-7)</p> <p>1951 Darkened ship except screened stern blue light.</p>	Deck Log, USS Calvert, May 1959
1959	May	23	Underway off San Diego	<p>0000 Steaming in company with TU 11.3.4, en route from Coronado Roads to sea for Operation TWIN PEAKS (PHIBEX-17-59) per COMPHIBGRU ONE OpOrder 307-59. Formation circular 570. Steering control in after; ship darkened except screened stern blue light. 1425 High water casualty in Boiler No. 2; slowed to 5 knots; left formation 1430 Casualty restored; speed 10 knots. 1444 Regained station. 1541 Commenced zigzagging per Zigzag Plan 2R. 1608 Ceased zigzagging. 2100 Set EmCon condition Bravo.</p>	Deck Log, USS Calvert, May 1959

1959	May	24	Underway off San Diego	<p>0000 Steaming in company with TU 11.1.3 at sea, conducting PHIBLEX 17-59 (Operation TWIN PEAKS) per COMPHIBGRU ONE. Formation circular 59G. Ship darkened except screened blue stern light.</p> <p>0550 Formed replenishment formation 62. 0646 Received first line from SIRIUS; SEMINOLE alongside SIRIUS to port. 0655 Commenced taking stores. 0700 Commenced highline transfer of personnel. 0716 All lines clear. 0903 Commenced approach to starboard side of RAINIER. 0920 Received first line from RAINIER 0925 Commenced receiving dummy loaded ammunition 0940 Commenced breakaway from RAINIER. 1325 Commenced approach to port side of USS GUADALUPE; Captain at the conn. 1347 Received first line from oiler. 1351 Commenced receiving supplies at No. 4 hatch via highline. 1352 Received fuel hose from oiler. 1353 SEMINOLE alongside to starboard of GUADALUPE. 1355 Commenced highline transfer of personnel. 1401 Highline transfer completed. 1409 Commenced receiving fuel. 1430 Completed fueling — received 884 barrels. 1959 Darkened ship except screened blue stern light.</p>	Deck Log, USS Calvert, May 1959
1959	May	25	Underway off San Diego	<p>0000 Steaming in company with TU 11.1.3 at sea, conducting PHIBLEX 17-59 (Operation TWIN PEAKS) per COMPHIBGRU ONE. Formation circular 59G. Speed 9 knots. PAUL REVERE (APA-248) — station 0; MAGOFFIN (APA-199) — station A-1; CALVERT — station A-2; MONTROSE (APA-212) — station A-3; SEMINOLE (AKA-104) — station A-4; SKAGIT (AKA-105) — station A-5; WINTONIDE (LSD-27) — station A-7; MONTCELLO (LSD-35) — station A-8; POINT DEFIANCE (LSD-31) — station A-9</p> <p>A second 6-ship circular formation 3500 yards astern of TU 11.1.3 maintaining station on PHIBRON ONE. CALVERT assigned sector 180R–270R to PHIB axis, within 20 miles. Boilers No. 1 and 2, Generators No. 1 and 2 on the line. Ship darkened except screened blue stern light. Condition of Readiness III modified; Material Condition R set.</p> <p>0410 Turned on running lights and aircraft warning lights; energized surface search radar 0550 Formed replenishment formation 62. CALVERT maneuvering independently to take station B-4.</p> <p>0600 Commenced approach on starboard side of SIRIUS 0646 Received first line from SIRIUS; SEMINOLE alongside SIRIUS to port 0655 Commenced taking stores 0700 Commenced highline transfer of personnel 0716 All lines clear; maneuvering to clear SIRIUS and take station B-5 astern of RAINIER. Range 3600 yards. 0903 Commenced approach to starboard side of RAINIER.</p>	Deck Log, USS Calvert, May 1959

1959	May	25	Underway off San Diego	<p>0920 Received first line from RAINIER 0925 Commenced receiving dummy loaded ammunition 0940 Commenced breakaway from RAINIER 0945 All lines clear; maneuvering to take station B-1, 2000 yards astern of GUADALUPE 0958 Officer of the Deck given the conn 1003 Captain took the conn; A/B Two-Thirds; sounded three short blasts 1004 All engines stop 1005 SEMINOLE passed ahead starboard to port, approx. 500 yards 1005 All engines ahead standard 1007 Officer of the Deck given the conn 1025 On station B-1, 2000 yards astern of GUADALUPE.</p>	Deck Log, USS Calvert, May 1959
1959	May	25	Underway off San Diego	<p>1325 Commenced approach to port side of USS GUADALUPE; Captain at the conn. 1347 Received first line from oiler. 1351 Commenced receiving supplies at No. 4 hatch via highline. 1352 Received fuel hose from oiler. 1353 SEMINOLE alongside to starboard of GUADALUPE. 1355 Commenced highline transfer of personnel 1401 Highline transfer completed. 1409 Commenced receiving fuel. 1430 Completed fueling — received 884 barrels.</p> <p>1658 Formed Formation 57C 1959 Darkened ship except screened blue stern light.</p>	Deck Log, USS Calvert, May 1959
1959	May	26	Underway off San Diego	<p>0000 Steaming in company with units of TU 11.4.3, conducting second detecting phase of Operation TWIN PEAKS (PHIBLEX 17-59) per COMPHIBGRU ONE OpOrder 307-59. Formation circular 57C. Speed 10 knots. PAUL REVERE (APA-248) — station A-0; CALVERT — station A-1; SKAGIT (AKA-105) — station A-2; SEMINOLE (AKA-104) — station A-3; MAGOFFIN (APA-199) — station A-4; MONTROSE (APA-212) — station A-5; WHETSTONE (LSD-27) — station A-6. Ship darkened except screened blue stern light.</p> <p>0805 Set Condition ZEBRA throughout. 0821 Commenced sinuous course (Cam 5). 0845 SEMINOLE sighted green flare off starboard beam 0846 Ceased sinuous course. 0851 Set Condition YOKE throughout 0853 MONTROSE sighted submarine periscope 500 yards off port beam 0857 Resumed sinuous course (Cam 5). 0900 WHETSTONE sighted submarine periscope bearing 137°, distance 400 yards 0905 WHETSTONE repeated sighting; 0908 WHETSTONE sighted periscope 200 yards off deck; 0909 WHETSTONE repeated sighting; 0910 WHETSTONE repeated sighting 0912 Secured from General Quarters; set Condition III 0915 Received warning RUBY 0916 Went to General Quarters 0919 Resumed sinuous course (Cam 5). 0921 Set Condition ZEBRA 0927 Received warning WHITE. Set speed 13 knots</p>	Deck Log, USS Calvert, May 1959

1959	May	26	Underway off San Diego	<p>0930 Set Condition YOKE main deck and above 0933 Ceased sinuous course; secured from General Quarters; set Condition III. 1003 SEMINOLE assumed air search radar guard; set EMCON condition DELTA 1025 Ceased sinuous course; Set speed 14 knots. 1137 Resumed sinuous course (Cam 5). Speed 11 knots. 1306 Ceased sinuous course. Speed 14 knots. 1307 Received guard mail via helicopter from USS PRINCETON (LPH-5). 1358 Received guard mail via helicopter from LPH-5. 1532 Commenced steering sinuous course, Cam 5. 1842 Ceased sinuous course; speed 13 knots. Formed column formation. Speed 10 knots PAUL REVERE — station 1; CALVERT — station 2; SEMINOLE — station 3; SKAGIT — station 4; MAGOFFIN — station 5; MONTROSE — station 6; WHETSTONE — station 7.</p> <p>1951 Darkened ship except screened blue stern light. 2142 Formed column open order.</p>	Deck Log, USS Calvert, May 1959
1959	May	27	Underway for Camp Pendleton Off Camp Pendleton	<p>0000 Steaming in company with TU 11.4.3, approaching assault area off Camp Pendleton, California, for Operation TWIN PEAKS (PHIBEX 17-59) per COMPHIBGRU ONE OpOrder 307-4-59. Column formation. Speed 10 knots. Distance between ships 1200 yards. Boilers No. 1 and 2, Generators No. 1 and 3 on the line.</p> <p>0001 CALVERT assumed tactical command of CALVERT, SEMINOLE, and SKAGIT. Speed to 14 knots. 0210 Went to General Quarters.</p> <p>0219 Set Condition 1-Alpha. 0246 Anchored in anchorage O-6 off Camp Pendleton. 0257 Away all designated boats. 0413 Underway for anchorage N-18 off Camp Pendleton. 0515 Anchored in anchorage N-18 in assault area off Camp Pendleton. 0730 Commenced loading vehicles. 0800 - 1645 Offloaded troops, vehicles, and equipment. Except ship's platoon. 1650 By order of Commanding Officer, COMMANDER T.J. Mullins, USN, First Marine Division, placed under arrest 1951 Darkened ship. 2336 Underway, proceeding to sea-echelon area. 2340 Turned on navigational lights..</p>	Deck Log, USS Calvert, May 1959

1959	May	28	Off Camp Pendleton	<p>0000 Steaming independently en route from assault area off Camp Pendleton to sea echelon area per COMPHIBGRU ONE OpOrder 307A-59 for Operation TWIN PEAKS (PHIBLEX 17-59). Steering various courses and speeds to clear assault area.</p> <p>0250 Made rendezvous with TE 11.1.0.1; took station 3 in column formation. Speed 10 knots. RENVILLE (APA-227) — station 1; PICKAWAY (APA-222) — station 2; CALVERT — station 3.</p> <p>0618 Detached from formation and TE 11.1.0.1; proceeding independently to area off Del Mar boat basin, Camp Del Mar, for transfer of COMMANDER T.J. MULLINS to U.S. Naval Hospital, Oceanside.</p> <p>0842 Underway to sea echelon area.</p> <p>0925 Joined TE 11.1.0.1; took station 6 in column formation. Speed 10 knots. RENVILLE (APA-227) — station 1; PICKAWAY (APA-222) — station 2; MONTROSE (APA-212) — station 3; HENRICO (LSD-27) — station 4; SKAGIT (AKA-105) — station 5; CALVERT — station 6 .</p> <p>1210 Left formation to proceed to green beach to pick up LCMs Sighted submarine periscope bearing 010°, range 9000 yards; commenced evasive action Captain had the conn 1235 Lost contact; Officer of the Deck resumed conn 1239 Set special sea and anchor detail; proceeding to green beach 1315 Embarked LCMs 105 and 107 (5th Infantry Regiment).</p> <p>1358 Anchored in LST standby area "G" off green beach.</p>	Deck Log, USS Calvert, May 1959
			Underway at sea, off San Diego	<p>1429 Underway for sea echelon area; steering various courses and speeds to clear anchorage. 1449 Secured special sea and anchor detail. 1527 Conducted weekly test of degaussing system — conditions satisfactory. 1555 Proceeding to White Beach area to transfer patient Robert D. Muir, FN, USN, to medical detachment.</p> <p>1600 Lying to off White Beach for patient transfer. 1617 Patient transferred to medical detachment at White Beach. Commenced using engines to maintain station off White Beach. 1935 Underway from assault area to sea echelon area; steering various courses and speeds to clear area.</p>	Deck Log, USS Calvert, May 1959
1959	May	28	Underway at sea, off San Diego	<p>2000 Joined TE 11.1.0.1; took station 6 in column formation. Formation column Speed 10 knots WHETSTONE (LSD-27) — station 1; SKAGIT (AKA-105) — station 2; NAGOGFON (APA-199) — station 3; RENVILLE (APA-227) — station 4; SEMINOLE (AKA-104) — station 5; CALVERT — station 6.</p> <p>2225 Speed 14 knots. Simulated firing on torpedo boats port and starboard, distance 1000 yards</p>	Deck Log, USS Calvert, May 1959

1959	May	29	Underway at sea, off San Diego	<p>0000 Steaming in sea echelon area off Camp Pendleton, California, conducting PHIBLEX 17-59 (Operation TWIN PEAKS). In column formation, speed 10 knots. Ship darkened except masthead and screened stern blue light.</p> <p>1030 Sighted surfaced submarine USS PERCH (APSS-313), bearing 045°, distance 7500 yards.</p> <p>1115 Detached from TE 11.1.0.2; proceeding independently to ISE/sea echelon area.</p> <p>1235 Commenced independent ship exercises; various courses and speeds</p> <p>1445 Completed exercises; course 335°, speed 5 knots to rejoin TE 11.1.0.1</p> <p>1455 Maneuvering to take station 4 in column formation off ISE area</p> <p>1530 On station. Column formation. Speed 10 knots. MAGOFFIN — station 1; RENVILLE — station 2; SEMINOLE — station 3; CALVERT — station 4; PICKAWAY — station 5; MONTROSE — station 6; WHITSTONE — station 7; SKAGIT — station 8. Distance between ships 2500 yards</p> <p>1553 CALVERT Commanding Officer assumed Tactical Command of TE 11.1.0.1.</p> <p>2208 Sighted small craft bearing 225 degrees, range 1500 yards. Simulated firing on small craft.</p>	Deck Log, USS Calvert, May 1959
1959	May	30	Underway at sea, off San Diego	<p>0000 Steaming in sea echelon area off Camp Pendleton, California, conducting PHIBLEX 17-59 (Operation TWIN PEAKS). In column formation, speed 10 knots. Boilers No. 1 and 2, Generators No. 1 and 3 on the line. Ship darkened except masthead and screened stern blue light.</p> <p>1115 Detached from TE 11.1.0.2; proceeding independently to ISE/sea echelon area.</p> <p>1235 Commenced independent ship exercises; various courses and speeds</p> <p>1445 Completed exercises; course 335°, speed 5 knots to rejoin TE 11.1.0.1</p> <p>1455 Maneuvering to take station 4 in column formation off ISE</p> <p>1500 On station</p> <p>Formation column</p> <p>Speed 10 knots</p> <p>MAGOFFIN — station 1; RENVILLE — station 2; SEMINOLE — station 3; CALVERT — station 4; PICKAWAY — station 5; MONTROSE — station 6; WHITSTONE — station 7; SKAGIT — station 8</p> <p>Distance between ships 2500 yards</p> <p>OTC Commanding Officer MAGOFFIN</p> <p>1553 CALVERT Commanding Officer assumed Tactical Command of TE 11.1.0.1</p> <p>Formation column</p> <p>Speed 10 knots</p> <p>SEMINOLE — station 1; CALVERT — station 2; WHITSTONE — station 3; SKAGIT — station 4</p> <p>OTC Commanding Officer CALVERT</p>	Deck Log, USS Calvert, May 1959

				0000 Steaming in company with ships of TBL1.1.0.1 in sea echelon area off Camp Pendleton, California, conducting Exercise TWIN PEAKS (PHIBLEX 17-59) per COMPHIBGRU ONE Order 3074-59. Formation column Speed 10 knots SEMINOLE (AKA-104) — station 1; CALVERT — station 2; WHITESTONE (LSD-27) — station 3; SKAGIT (AKA-105) — station 4 Standard distance 2500 yards.	
1959	May	31	Underway at sea, off San Diego Off Camp Pendleton	0549 Formed column formation WHITESTONE — station 1; SKAGIT — station 2; SEMINOLE — station 3; CALVERT — station 4 – 0552 speed 8 knots, then 10 knots – 0616 course 045° 0628 Dissolved TBL1.1.0.1; WHITESTONE, SKAGIT, SEMINOLE directed to proceed independently to administrative anchorage 0630 Set special sea and anchor detail; steering independently to anchorage A-18 Captain and Navigator on bridge; Captain took the conn 0717 Anchored in anchorage A-18 off Camp Pendleton 1415 Commenced offloading ammunition 1425 Completed offloading ammunition 1528 Ship's platoon disembarked	Deck Log, USS Calvert, May 1959
1959	June	1	Off Camp Pendleton Underway for San Diego San Diego Harbor	0000 Anchored in Administrative Anchorage A-18 off Camp Pendleton, California, conducting PHIBLEX 17-59 (Operation TWIN PEAKS). Bearings Aero Beacon 088.1° Marker 048.2° Depot 036.5° Pier 108° Inner Breakwater Light 086.5°. Ship darkened except aircraft warning lights. 0705 Underway for San Diego. 0745 Speed 14 knots. 1235 Moored fore and aft to Buoys 47 and 48, San Diego Harbor	Deck Log, USS Calvert, June 1959
1959	Early June to early July		San Diego	Upon completion of this exercise the Calvert returned to San Diego for an upkeep period.	Cullen, Page 25
1959	June	2	San Diego Harbor	0000 Moored fore and aft to Buoys 47 and 48, San Diego Harbor. 1935 Patient reported with symptoms of appendicitis. 1936 LCVP 15 called away as hospital boat. 1937 Ambulance requested from U.S. Naval Station, San Diego. 1940 Patient lowered into LCVP 15. 1953 Hospital boat underway for Pier 2.	Deck Log, USS Calvert, June 1959
1959	June	3	San Diego Naval Station	1548 Underway in accordance with COMPHIBPAC msg 022243Z / June / 1959. Shifting berths from buoys 47 and 48 to berth 42 pier 4 U.S. Naval Station, San Diego California. 1632 Moored port side to pier 4 berth 42, U.S. Naval Station, San Diego, California.	Deck Log, USS Calvert, June 1959
1959	June	4	San Diego Naval Station	As before.	Deck Log, USS Calvert, June 1959

1959	June	5	San Diego Naval Station	1505 Underway in accordance with Admin, COMPHIBPAC message 02 2243Z of June 1959, shifting berths from pier 4, U.S. Naval Station, San Diego, California to buoys 47 and 48, in San Diego Harbor. Commenced steering various courses at various speeds proceeding to buoys. CAPTAIN at the Conn. 1534 Moored fore and aft to buoys 47 and 48	Deck Log, USS Calvert, June 1959
1959	June	6 - 11	San Diego Naval Station	June 10 1130 The Disbursing Officer returned aboard with \$26,000. June 11 0853 Energized the gyrocompass. 0925 Completed taking on fuel oil, having received 27,024 gallons NSFO. 1810 Completed taking on fresh water, having received 35,000 gallons potable water.	Deck Log, USS Calvert, June 1959
Dependents' Day Cruise					
1959	June	12	San Diego Naval Station Coronado Roads San Diego Harbor	0000 Moored as before. 0725 Civilian personnel (Dependents) commenced coming on board for one (1) day cruise. 0850 Underway in accordance with COMPHIBRON FIVE employment schedule to conduct dependents cruise. 0935 Lying to off Fleet Sonar School anchorage to complete embarking dependents for dependents cruise. 104 dependents and guests aboard. 0941 Underway standing out of San Diego, Harbor. 1027 Exercised the crew at general quarters. 1039 Set condition 1-Alfa. 1045 Steering various courses at various speeds proceeding to anchorage off Coronado Roads, lowered all designated boats to the rail. 1050 Away all boats. 1053 Anchored on right flank of Green Beach 1, in 11 fathoms of water, hard sand bottom, with 60 fathoms of chain to the port anchor on the following bearings; Bearings Coronado Hotel 014 Ballast Point 323.1 Point Loma 302 1109 Secured the special sea and anchor detail. 1130 Commenced hoisting in boats. 1204 Secured from condition 1-Alfa. 1321 Underway. 1723 Moored fore and aft to buoys 47 and 48, San Diego Harbor 1830 All dependents and guests left the ship.	Deck Log, USS Calvert, June 1959
1959	June	13 - 14	San Diego Harbor	As before.	Deck Log, USS Calvert, June 1959
1959	June	15	San Diego Harbor Coronado Roads San Diego Harbor	0000 Moored as before. 0815 Underway. 1030 Went to general quarters. 1038 Set condition 1-Alfa. 1044 Anchored on Right Flank LOD, Green Beach, Coronado Roads, California. 1058 Away all boats. 1122 All designated boats in the water. Conducting boat lowering exercise. 1154 Secured from condition 1-Alfa, set a modified steaming watch. 1240 Set condition of readiness 1-Alfa. 1532 Underway. 1732 Anchored in anchorage 204, San Diego Harbor.	Deck Log, USS Calvert, June 1959

1959	June	16	San Diego Harbor Coronado Roads San Diego Harbor	0000 Anchored in anchorage 204, San Diego Bay.	Deck Log, USS Calvert, June 1959
				0806 Underway	
				0850 Set Condition of readiness I.	
				0853 Set condition 1-Alfa.	
				0900 Lowered all designated boats to the rail. Commenced steering various courses at various speeds standing in to anchorage, Coronado Roads.	
				0915 Anchored on Right Flank LOD, Beach Lane 9.	
				0918 Away all boats.	
				1130 All boats alongside and tied up. Secured from condition 1-Alfa.	
				1232 Underway shifting to berth 173.	
				1307 Let go the port anchor, anchored in anchorage 173, Coronado Roads.	
				Conducting amphibious exercises.	
				1316 Secured the special sea and anchor detail.	
				1517 All amphibious exercises completed. Commenced hoisting in boats.	
1530 All boats aboard. Secured from condition 1-Alfa.					
1610 Underway, proceeding to anchorage 204 San Diego Harbor.					
1703 Anchored in berth 204, San Diego Harbor.					
1807 Lost electrical power throughout the ship. Secured No. 2 boiler.					
1811 Restored electrical power with emergency generator.					
1959	June	17	San Diego Harbor Underway off San Diego	0556 Underway.	Deck Log, USS Calvert, June 1959
				0632 Entered International Waters.	
				0944 Set material condition Yoke below the main deck.	
				1000 Commenced exercise Z-1-G.	
				1135 Commenced firing runs.	
				1202 Ceased firing. Completed exercise Z-1-G.	
				1203 Set material condition Yoke throughout the ship.	
				1204 c/c to 270, and c/s to 10 knots.	
				1208 Secured from general quarters, ammunition expended 296 rounds 40mm, HEIT, and 20 rounds 3"50 cal. VTF, no casualties.	
				1920 Commenced steering various courses at various speeds standing into Coronado Roads. CAPTAIN and Navigator on the bridge.	
1948 Lying to, disembarked Officers and enlisted men to conduct Battle Problem on the USS MAGOFFIN (APA-199), in the MAGOFFIN mike boat-24.					
1954 Underway.					
1959	June	17	Underway off San Diego San Diego Harbor	2001 Commenced steering various courses at various speeds standing out of Coronado Roads, and standing into San Diego Harbor.	Deck Log, USS Calvert, June 1959
				2006 Entered Inland Waters.	
				2050 Anchored in anchorage 300 San Diego Harbor.	
				Anchored in anchorage 300, as before.	
1959	June	18	San Diego Harbor	1135 Completed taking on fresh water, having received 55,000 gallons. YW 111 cast off and clear of the ship.	Deck Log, USS Calvert, June 1959
				1145 Commenced taking on ammunition.	
				1220 Secured from taking on ammunition, having received 124 rounds 5"/38 cal., 256 rounds 3" 50 cal. and 1840 rounds 40mm.	

				Anchored in anchorage 300, as before.	
1959	June	19	San Diego Harbor	<p>0330 Commenced counter clockwise swing with the changing tide. 0430 Completed swinging to the flood tide. 0750 Loss of vacuum in the main condenser due to seaweed. 1130 Underwater Operations Commenced diving (starboard side, frame 110) to remove kelp from main condenser intake suction strainer. Diver DEBUS, Jerome (n) 518 10 98 DC3, USN. 1350 Underway for berth shift to buoys 47 and 48. 1505 Moored fore and aft to buoys 47 and 48, San Diego Harbor. 1615 The Commanding Officer, CAPTAIN W.L. PHALER, USN, departed on five (5) days leave.</p>	Deck Log, USS Calvert, June 1959
1959	June	20 - 30	San Diego Harbor	<p>22 Shifted berths, moored to Pier 4, Berth 41, U.S. Naval Station, San Diego. Engineering plant placed in a cold iron status. 23 Received 52,404 gallons of fresh water. 24 Commanding officer returned from leave. 25 Received 15,244 gallons of fresh water. 26 Received 10,231 gallons of fresh water.</p>	Deck Log, USS Calvert, June 1959
1959	July	1	San Diego Naval Station	<p>Moored starboard side to pier 4, berth 41, U.S. Naval Station, San Diego.</p> <p>1000 Flag Shift COMPHIBRON 5 shifted flag from CALVERT to U.S.S. PAUL REVERE (APA-248). 1058 Fire Incident Fire reported at frame 156, shaft alley, hold #5. Ship's fire alarm sounded; Naval Station Fire Department called. 1116 Fire extinguished. Cause Welding heat conducted through bulkhead.</p>	Deck Log, USS Calvert, July 1959
1959	July	2 - 4	San Diego Naval Station	Moored as before.	Deck Log, USS Calvert, July 1959
1959	July	5	San Diego Naval Station	<p>Moored as before.</p> <p>1200 Nine reserve officers reported aboard for reserve training. 1510 Passengers Embarked 17 Sea Scouts and leaders reported for transportation to Acapulco, Mexico.</p> <p>Leaders Merle J. MIELKE, John HURDMAN. Scouts Andrews, Bailey, Beasley, Dahl, Evans, Jensen, Lyons, Lynch, Mitchell, Nelson, Phaler, Smith (J), Smith (R), Vasquez, Wozniak.</p>	Deck Log, USS Calvert, July 1959
Sea Scouts Cruise to Acapulco, Mexico - July 6 - 19					
On 6 July 1959, in company with USS Skagit (AKA-105), and with 35 Explorer Scouts embarked, the Calvert sailed to Acapulco, Mexico for a ship's visit. During the four days in that port, hundreds of civilians visited the ships. Liaison was established with the local Mexican Boy Scouts; and members of the Mexican Army and Navy were official guests of the ships.					Cullen, Page 25

1959	July	6	San Diego Naval Station Underway for Acapulco, Mexico	<p>0000 Moored starboard side to pier 4, berth 41, U.S. Naval Station, San Diego, 0735 Mr. George Moen, Sea Scout leader reported on board for transportation to Acapulco, Mexico. 0929 Underway for Acapulco Mexico in company with U.S.S. SKAGIT (AKA-105). 1002 Engineering Casualty Engine Room reported overheated main condenser. 1004 Restored engineering casualty.</p> <p>1040 Flight Incident Aircraft P-5M-1 BU No. 7718VF-40 cut across the bow of this ship and then made a complete circle forcing this ship to back down. 1200 Maneuvering on various courses at various speeds proceeding to operating area 33.7.1212 all stop.</p> <p>Engineering Casualty Engineering casualty due to low water in boilers. 1218 Engineering casualty restored. 1340 Went to General Quarters, set Material Condition Zebra.</p> <p>1350 Commenced exercise Z-1-G. 1411 Commenced firing runs. 1422 Completed firing runs.</p> <p>1424 Set Material Condition Yoke. Completed exercise Z-1-G.</p> <p>1432 C/S to 13 knots.</p> <p>1433 Secured from General Quarters, ammunition expended 68 rounds HEIT-SD; 116 rounds HET. Gun casualty Inner Crank, Mount 41 broken.</p>	Deck Log, USS Calvert, July 1959
1959	July	7 - 10	Underway for Acapulco, Mexico	<p>Steaming in company with the U.S.S. SKAGIT (AKA 105) enroute San Diego, California to Acapulco, Mexico in accordance with CINCPACFLT employment schedule.</p> <p>In line abreast to port with SKAGIT guide in station 1 and CALVERT in station 2. Distance 2000 yards. Speed 13 knots (78 RPM).</p> <p>July 7 and 8 During the afternoon each of these days the Skagit and Calvert exercised at highline transfers.</p> <p>July 10 0312 Entered thunderstorm area. Experienced 7 degree Westerly deviation on magnetic compass. Visibility decreased to 3 miles. 0340 Cleared storm area. Visibility 10 miles. 0510 Magnetic compass deviation returned to normal. 1507 Passed Bufadero Bluff Lighthouse abeam to port approximately 10 miles. 2005 Sighted Punta Garrobo light bearing 062, distance about 18 miles. 2011 Sighted Roca Negra light bearing 055 distance about 15 miles. 2041 Merchant vessel S.S. ROCK LANDING passed abeam to starboard distance 2.8 miles. 2103 Passed Roca Negra light abeam to port distance about 13 miles.</p>	Deck Log, USS Calvert, July 1959

				<p>July 11 0000 Steaming, as before, 13 knots. 0736 Anchored in Boca Grande, Acapulco, Mexico on the following bearings Pier 331.8, Grifo Point Light 179, Beacon 275 and shoal 053.5.</p>	
1959	July	11	Acapulco, Mexico	<p>July 12 1300 Commenced general visiting aboard. 1545 Secured from general visiting.</p>	Deck Log, USS Calvert, July 1959
				<p>July 13 1305 Commenced general visiting. 1600 General visiting completed. Approximately 600 persons having visited the ship. No casualties.</p>	
1959	July	15	Underway for San Diego	<p>0420 Underway for San Diego, California in accordance with CINCPACFLT employment schedule. Captain and Navigator on the bridge. Captain at the conn. 0425 Steering various courses at various speeds standing out of Boca Grande harbor.</p>	Deck Log, USS Calvert, July 1959
1959	July	16 - 19	Underway for San Diego San Diego Bay	<p>July 16 - 19 Steaming in company with U.S.S. SKAGIT (AKA 105) enroute Acapulco, Mexico to San Diego, California. Speed 15 knots. July 17 Exercised at high line transfers. July 18 Exercised at battle problems.</p>	Deck Log, USS Calvert, July 1959
				<p>July 19 0909 Moored fore and aft to buoys 30 and 31, San Diego, CA. Disembarked civilian Sea Scouts and reserve officer contingent.</p>	
1959	July	20 - 26	San Diego Naval Station	<p>July 20 Shifted berths to Pier 1, Berth 14, U.S. Naval Station, San Diego. 1415 - 1900 Removal of air search radar antennae.</p>	Deck Log, USS Calvert, July 1959
1959	July	27	San Diego Naval Station Coronado Roads	<p>0000 Moored port side to pier 1, berth 14, U. S. Naval Station, San Diego. 0903 Underway for Coronado Roads for amphibious exercises. 1120 Anchored at LCU beach lane No. 4, Coronado Roads. 1212 Went to General Quarters; set Material Condition Zebra and Condition 1-A. 1241 Commenced amphibious exercises. Away all boats. 1515 Completed amphibious exercises; commenced hoisting in boats. 1620 Secured from condition 1-A; set modified steaming watch.</p>	Deck Log, USS Calvert, July 1959

1959	July	28	Coronado Roads	<p>0000 Anchored on right flank, LCU Beach Lane 4, Coronado Roads.</p> <p>0800 General Quarters Condition Zebra and Condition 1-A set for amphibious exercises. 0824 Away all boats. 0940 Observers The Commanding Officer of the USS MONTROSE (APA-212) and additional observers arrived on board to monitor exercises. 1145 Secured from Condition 1-A; set modified steaming watch. 1314 Set Condition 1-A; resumed amphibious exercises. 1528 Exercises completed; commenced hoisting boats. 1620 Observers from USS MONTROSE departed the ship. 1642 LCM 4 utilized to return observers to their ship. 1847 Secured from Condition 1-A. 1850 All boats successfully hoisted aboard.</p>	Deck Log, USS Calvert, July 1959
1959	July	29	Coronado Roads	<p>0000 Anchored on right flank, LOD, Beach Lane 4, Coronado Roads.</p> <p>0800 Went to General Quarters. 0807 Condition Zebra set. 0808 set Condition 1-A. Commenced amphibious exercises. 0824 Away all boats. 0940 Commanding Officer USS MONTROSE (APA-212) and observers arrived aboard. 1145 Secured from Condition 1-A. 1314 Set Condition 1-A; commenced amphibious exercises. 1528 Exercises completed; commenced hoisting boats aboard. 1620 Commanding Officer USS MONTROSE and observers departed. 1642 All boats aboard except LCM 4 (returning observers). 1647 Secured from Condition 1-A; set modified steaming watch. 1820 Last boat hoisted aboard.</p>	Deck Log, USS Calvert, July 1959
1959	July	30	Coronado Roads	<p>0000 Anchored on right flank LOD, Beach Lane No. 4, Coronado Roads. 0500 Underway for Op-Area EB-2B for Exercise 2-1-G. 0833 Commenced engineering drills; completed 0915. 0945 Commenced battle problem with various courses and speeds. 1132 Completed battle problem; 1146 set Condition Yoke. 1153 Secured from General Quarters, set Condition IV. 1250 Went to General Quarters for firing exercise. 1331 Commenced firing exercise 2-1-G. 1430 Completed firing exercise; Ammo Expended 290 rounds 40MM, HEIT. Maneuvering to retrieve sleeve. 1446 Secured from General Quarters. 1938 Anchored in Anchorage 171, Coronado Roads.</p>	Deck Log, USS Calvert, July 1959

1959	July	31	Coronado Roads San Diego Bay	<p>0000 Anchored in Anchorage 171, Coronado Roads.</p> <p>0613 Underway for Operas 12-21, 15 per COMPHIBRON FIVE employment for battle problems. 0730 Lying to in Anchorage 213, San Diego Harbor to embark observers. 0735 Commanding Officer USS MONTPELIER (APA-197), plus Officers and Enlisted men, came aboard for battle problem. 0739 Underway, steering various courses/speeds standing out of harbor. 1145 Went to General Quarters. 1200 Commenced battle problem. 1323 Completed battle problem. 1333 Secured from General Quarters. 1827 Anchored in Anchorage 304, San Diego</p>	Deck Log, USS Calvert, July 1959
1959	August	1 - 3	San Diego Harbor	<p>Aug 1 - 3 Anchored in Anchorage 304, San Diego Harbor.</p> <p>Aug 3 Relocated to Anchorage 204, San Diego Harbor, including several practice moorings.</p>	Deck Log, USS Calvert, August 1959
1959	August	4	San Diego Harbor Underway off San Diego San Diego Harbor	<p>0000 Anchored as before.</p> <p>0647 Underway for sea per COMPHIBRON FIVE schedule for ISE exercises. 0800 - 1400 Exercised the crew at various drills Man overboard, Fire, Abandon Ship. 1617 Anchored in Anchorage 204, San Diego Harbor.</p>	Deck Log, USS Calvert, August 1959
1959	August	5	San Diego Harbor Underway off San Diego San Diego Harbor	<p>0000 Anchored as before.</p> <p>0648 Underway for gunnery exercises. 0940 Went to General Quarters for gunnery exercise Z-30-G. 1100 Closed to 1/3 speed due to engineering casualty (low steam pressure); restored at 1103. 1109 Completed exercise. Set speed 12 knots. 1115 Set Condition Yoke and secured from General Quarters.</p> <p>1250 Went to General Quarters; set Condition Zebra for gunnery exercises. 1426 Completed firing; Set speed 15 knots. 1450 Near-collision incident S.S. ECLIPSE (Socony Vacuum) identified as Skunk "Mike" at 12,050 yards. 1455 S.S. ECLIPSE failed to acknowledge 5 short blasts; violated Rules of the Road (right of way).</p> <p>1456 USS CALVERT executed 30 degrees right rudder to avoid collision; no personnel visible on ECLIPSE bridge.</p> <p>1550 Standing into San Diego Harbor. 1736 Anchored in Anchorage 204, San Diego Harbor.</p>	Deck Log, USS Calvert, August 1959

1959	August	6	San Diego Harbor	0000 Anchored as before.	Deck Log, USS Calvert, August 1959
			Underway off San Diego	0655 Underway for amphibious exercises in Coronado Roads. 0745 Anchored on Right Flank, LOD, Beach Lane No. 2, Coronado Roads. 1130 Went to General Quarters; 1138 set Condition Zebra. 1139 set Condition 1-Alfa. 1156 Away all boats for amphibious exercise. 1430 Exercise completed; all boats aboard by 1517. 1707 Moored port side to Pier 1, Berth 14, U.S. Naval Station, San Diego.	
1959	August	7	San Diego Naval Station	0000 Moored port side to Pier 1, Berth 14, U.S. Naval Station, San Diego. Change of Command 1050 COMPHIBRON 3 arrived for Change of Command. 1105 CAPT William M. HAYDEN relieved CAPT Walter L. PHALEN as Commanding Officer, U.S.S. CALVERT (APA-32). 1125 COMPHIBRON 3 departed. 1311 CAPT Walter L. PHALEN detached; ordered to Field Command, AFSWP, Albuquerque, NM.	Deck Log, USS Calvert, August 1959
			San Diego Naval Station	Moored as before.	
1959	August	10	San Diego Naval Station	0000 Moored as before.	Deck Log, USS Calvert, August 1959
			Underway off San Diego	1004 Underway for sea. 1521 Lying to for double echo check with USS MONTROSE (APA-212); completed at 1541. 1640 Anchored in Anchorage 208, San Diego Harbor.	
1959	August	11	San Diego Harbor	0000 Anchored as before.	Deck Log, USS Calvert, August 1959
			Underway off San Diego	0850 Received 59 Sea Scouts and Boy Scouts and their leaders aboard for a 24 hour cruise.. 0939 Underway. 1612 Anchored in Anchorage 206, San Diego Bay.	
1959	August	12	San Diego Bay	0000 Anchored as before.	Deck Log, USS Calvert, August 1959
			Underway off San Diego	0855 Underway. 1030 Exercised crew at General Quarters for engineering casualty drills. 1140 Secured from drills and General Quarters. 1418 Anchored in Anchorage 206, San Diego Bay. 2354 Underway, enroute to Camp Del Mar, Oceanside, California.	

1959	August	13	Underway for Camp Del Mar, Oceanside, CA Camp Del Mar	0000 Steaming independently from San Diego Bay to Oceanside, California. 0614 Anchored 3500 yards off Camp Del Mar breakwater, Oceanside. 0840 LCU-1387 alongside port bow; 0845 commenced off-loading Class "B" cargo. 1405 LCU-1387 cast off.	Deck Log, USS Calvert, August 1959
1959	August	14	Camp Del Mar Underway for San Deigo San Diego Naval Station	0000 Anchored as before, off Camp Del Mar. 0624 Underway for San Diego. 1144 Moored starboard side to Pier 4, Berth 45, U.S. Naval Station, San Diego. 1415 Engineering plant placed in cold iron status.	Deck Log, USS Calvert, August 1959
1959	August	15 - 31.	San Diego Naval Station	Moored starboard side to Pier 4, Berth 45, U.S. Naval Station, San Diego. Aug 24 Captain's inspection of lower decks. Aug 25 RADM E. B. MCKINNEY (Board of Inspection and Survey), and staff, for inspection of the ship. Aug 31 Lighted fires under boiler number 1 and number 2.	Deck Log, USS Calvert, August 1959
1959	September	1 - 2	San Diego Naval Station	Moored starboard side to Pier 4, Berth 45, U.S. Naval Station, San Diego.	Deck Log, USS Calvert, September 1959
Phiblex 5-60, Operation Clear Ridge - Hawaii - September 3 - October 5					
On 3 September 1959, a few days after the completion of a material inspection by Rear Admiral E.B. McKinney, USN, Head of the Board of Inspection and Survey, Pacific Coast Section, the Calvert sailed for Pearl Harbor where she and her crew participated in Phiblex 5-60, Operation Clear Ridge					Cullen, Page 25
1959	September	3	Underway for Hawaii	0753 Underway for Pearl Harbor, Hawaii (unit of TG 53.6.3.2) for Operation CLEAR RIDGE. 0955 Formed column CALVERT (Guide, Station 1), USS FORT MARION (LSD-22) (Station 2), USS CATAMOUNT (LSD-17) (Station 3). Speed 12 knots. 1555 Rendezvous with TG 53.6.3.2; formed Formation 510 CALVERT (Guide, Station 0); USS CATAMOUNT (Station 2); USS OAK HILL (LSD-7) (Station 4); USS FORT MARION (Station 4-A); USS VERNON COUNTY (LST-1161) (Station 4-B). COMPHIBRON FIVE, in Calvert.	Deck Log, USS Calvert, September 1959
1959	September	4 - 10	Underway for Hawaii	Underway as before, for Hawaii, with unit TG 53.6.3.2. Speed 12 knots.. Sept 6 1057 At Latitude 29° 21' N, Longitude 132° 45' W, stopped all engines. 1057 Dumped radioactive waste material in 2420 fathoms of water. 1058 Commenced maneuvering to resume station.	Deck Log, USS Calvert, September 1959
1959	September	11	Underway for Hawaii Pearl Harbor	0000 Steaming as before. 0600 Formed Column Formation CALVERT (Guide); USS SEAGRIT; USS FORT MARION; USS CATAMOUNT; USS OAK HILL (LSD-7). 0801 Passed Diamond Head Lighthouse abeam to starboard, distance 4 miles. 0834 Proceeding independently into Pearl Harbor. 1000 Moored port side to Berths B1 and B2, U.S. Naval Base, Pearl Harbor, Hawaii.	Deck Log, USS Calvert, September 1959

1959	September	12 - 13	Pearl Harbor	Moored port side to Berths B1 and B2, U.S. Naval Base, Pearl Harbor. Sept 12 0800 Commenced offloading cargo. 1215 Completed offloading all cargo.	Deck Log, USS Calvert, September 1959
1959	September	14 - 15	Pearl Harbor	0000 Moored port side to Berths B1 and B2, U.S. Naval Base, Pearl Harbor. 0800 Commenced loading cargo and vehicles. 1315 Completed loading all cargo and vehicles.	Deck Log, USS Calvert, September 1959
1959	September	16	Pearl Harbor Underway for Kahoolawe, Hawaii	0000 Moored as before. 1352 Underway for sea as a unit of TE 53.6.4.3. 1542 Formed in Column Formation with CALVERT, guide, in Station 1; U.S.S. SKAGIT (AKA-105) in Station 2; and U.S.S. OAK HILL (LSD-7) in Station 3. Formation course 090. Formation speed 9 knots. OTC CTE 53.6.4.2, COMPHIBGRU FIVE, in CALVERT. 1559 With Diamond Head Light abeam to port, distant 2 miles, took departure for Smuggler's Cove, Kahoolawe, Hawaii.	Deck Log, USS Calvert, September 1959

Phiblex 5-60, Operation Clear Ridge, Hawaii - September 13 to September 26 (1, 2)

3) "Operation Clear Ridge is an amphibious exercise conducted by units of the U.S. Pacific Fleet and the Fleet Marine Force, Pacific (PMFPac). This operation is based on the commitment of a Marine Brigade, acting as part of a Naval Task Force in assisting a friendly nation in destroying an Aggressor invader. Fleet Marine Force, Pacific participation involves over 3,000 men of the Marine Brigade, composed of the 4th Marine Regiment (Infantry), 3rd Battalion 12th Marines (artillery), Marine Helicopter Transport Squadron 161 and Serice Battalion (logistical support), plus certain organic and attached combat support and combat service elements stationed at Kaneohe Bay. Some support units and helicopters are from California based units.

Objective of Clear Ridge is to provide maximum training in planning and conducting an amphibious/airborne operation, to provide wide-scale team training for assigned units of the Pacific Fleet and Fleet Marine Force in order to improve, develop and evaluate Navy-Marine Corps Amphibious tactics and techniques."

4, 5) Leathernecks of the 1st Marine Brigade invaded Kauai will face an entrenched and determined "aggressor" force composed of 250 members of "F" Co., 2nd Bn, 7th Marines, 1st Marine Division (based at Camp Pendleton, Calif). During the landing (September 20th) and three days of simulated combat, with umpire groups, attached to both attacking and defending forces, assessed casualties, losses of equipment and supplies, and capture of prisoners.

"The 1st Marine Brigade began embarking Monday, September 14th aboard vessels of the Navy's Amphibious Group Three at Pearl Harbor and Kaneohe Bay in preparation for an amphibious landing exercise on Kauai. Combat loading of the Leathernecks continued through Wednesday the 16th. Some troops embarked aboard LST's Tom Green County and Westchester County last Saturday at Kaneohe Bay.

Adm. Cooper's flagship, the USS Paul Revere (APA 248), the helicopter carrier Princeton (LPH 5), and the USS Monticello (LSD 35), were scheduled to depart Pearl Harbor Wednesday afternoon. The USS Catamount (LSD 17) was also scheduled to leave that same afternoon."

1)) Cullen, Page 25

2) A Chronology of the United States Marine Corps, 1947-1964, Volume III, 1971, Pg 42

4) Calif. Marines to Oppose Brigade During Clear Ridge, Windward Marine, Vol VIII, No. 36, P1, September 4, 1959

5) TECG Already Busy Planning For Operation Clear Ridge, Windward Marine, Vol VIII, No. 36, p4, September 4, 1959

3) Techniques Are Stressed At Kauai, Windward Marine, Vol VIII, No. 38, p1, 3, Septmber 18, 1959

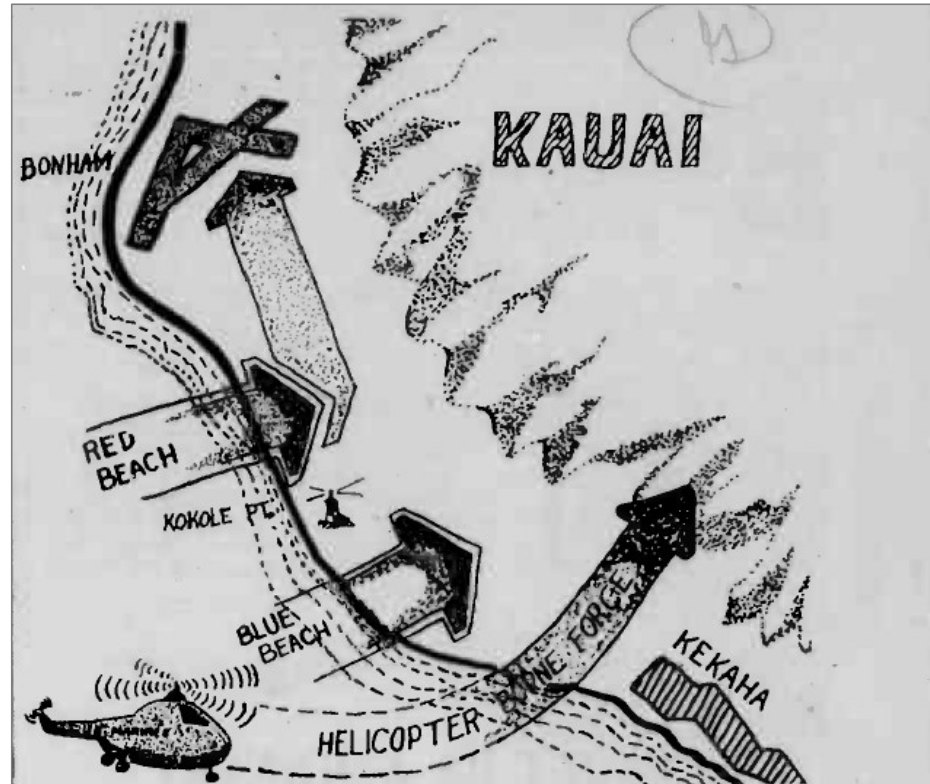
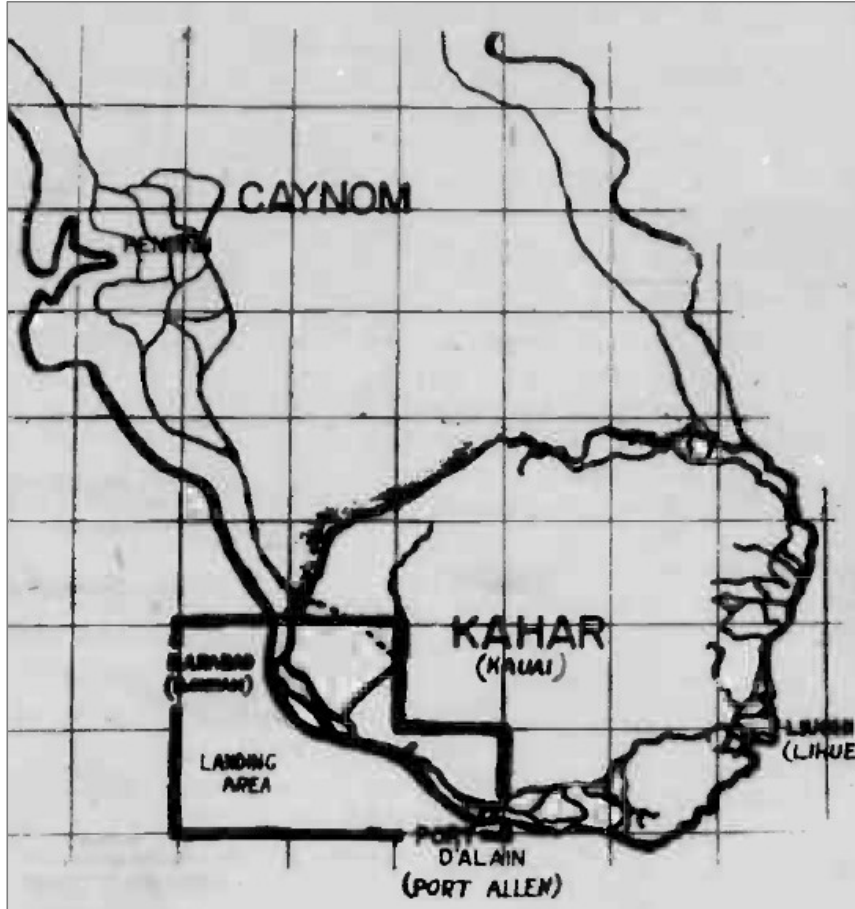
1) Landing Force Embarks On Amphib Group 3 Vessels, Windward Marine, Vol VIII, No. 38, p1, September 18, 1959

1959	September	17	Underway for Kahoolawe, Hawaii Lahaina Roads, Maui	0000 Steaming in company with units of TE 53.6.4.2 enroute Pearl Harbor, Hawaii to Kahoolawe, Hawaii for Operation CLEAR RIDGE. 0802 Exercised crew at General Quarters. 0811 Set Condition of Readiness 1A. 0840 Held abandon ship drill. 0855 Secured from drill; remanned General Quarters stations. 0900 Secured from General Quarters. 1208 Anchored in Rehearsal Administrative Anchorage B-11, Smuggler's Cove, Kahoolawe, Hawaii. 1440 Underway for Maui, Hawaii as part of TE 53.6.4.2. 1723 Anchored in anchorage E-13, Lahaina Roads, Lahaina, Maui, Hawaii.	Deck Log, USS Calvert, September 1959
1959	September	18	Lahaina Roads, Maui	0000 Anchored as before. 1310 Underway from anchorage standing out into Auau Channel. 1553 Anchored in anchorage E-13, Lahaina Roads, Lahaina, Maui, Hawaii.	Deck Log, USS Calvert, September 1959
1959	September	19	Lahaina Roads, Maui Underway for Kokole Point, Kauai	0000 Anchored in anchorage E-13, Lahaina Roads, Lahaina, Maui, Hawaii. 0901 Underway for objective area with TE 53.6.4.2. 0925 Formed Column Formation CALVERT (Guide, Station 1), USS SKAGIT (AKA-105) (Station 2), USS OAK HILL (LSD-7) (Station 3), and USS FORT MARION (LSD-22) (Station 4). Formation Details Course 305, speed 10 knots. 1300 Formed Formation 51-C. Axis 000, course 270, speed 8 knots. Formation Composition CALVERT (Guide, Station 0), SKAGIT (A-1), OAK HILL (A-2), FORT MARION (A-3), USS VERNON COUNTY (LST-1161) (A-4), USS WESTCHESTER COUNTY (LST-1167) (A-5), and USS TOM GREEN COUNTY (LST-1159) (A-6). 1655 Passed Barber's Point, O'ahu, abeam to starboard, distance 18 miles.	Deck Log, USS Calvert, September 1959
1959	September	20	Underway for Kokole Point, Kauai Kokole Point, Kauai	0000 Steaming en route Lahaina, Maui to Kokole Point, Kauai, Hawaii for Operation CLEAR RIDGE. 1033 OAK HILL, FORT MARION, VERNON COUNTY, WESTCHESTER COUNTY, TOM GREEN COUNTY, and QUAPAW detached for independent stations. 1100 TE 53.6.4.2 dissolved. CALVERT and SKAGIT formed TE 53.6.4.3.. 1450 Anchored in anchorage B-19, Kekaha, Kauai, Hawaii in 18 fathoms (sand and coral). Bearings Kokole Point Light (310.4), Kekaha Sugar Company chimney (013.2).	Deck Log, USS Calvert, September 1959

1959	September	20	Kokole Point, Kauai	<p>1602 Commenced off-loading combat cargo and troops. 1610 LCU-1374 made up alongside the port bow. 1612 Air Raid Warning RED. 1629 Simulated opening fire on aggressor aircraft approaching from 135; 1630 Cease fire. 1632 Air Raid Warning WHITE. 1642 Air Raid Warning RED; aggressor aircraft approaching from the northeast. 1652 Simulated opening fire; 1654 Cease fire. 1657 Air Raid Warning WHITE. 1703 Air Raid Warning RED; aggressor aircraft overhead. Simulated opening fire; 1705 Cease fire. 1714 Air Raid Warning WHITE. 1720 Air Raid Warning RED; BLUE BEACH under simulated strafing attack. 1728 Air Raid Warning WHITE. 1733 LCU-1374 cast off and clear of the ship. 1836 Darkened ship except for aircraft warning lights. 1934 Completed cargo handling. Secured from Condition of Readiness 1A. Security Set Picket Boat circling the ship.</p>	Deck Log, USS Calvert, September 1959
------	-----------	----	---------------------	--	---------------------------------------

Operation Clear Ridge

Landing Force Embarks On Amphib Group 3 Vessels, Windward Marine, Vol VIII, No. 38, p1, September 18, 1959



BARKING SANDS ASSAULT—Arrows point the way Leathernecks of the 1st Marine Brigade will attack Kauai on Sunday, Sept. 20. Main action of the amphibious assault, tabbed CLEAR RIDGE, will take place in the Barking Sands area between the Kokole Point Lighthouse and the town of Kekaha. From the air, a battalion of helicopter-borne Marine infantrymen will swoop down on the high ground behind the beaches and attempt to dislodge an entrenched "aggressor" force. Activities at Red Beach will be limited to a "paper war" with all forces being committed constructively there to add realism to the maneuvers.

1) The land phase of Operation Clear Ridge, an amphibious exercise involving some 10,000 Navymen and Marines is scheduled to begin Sunday September 20th on Kauai. The purpose of this exercise is to test the ability of the unit commanders to cope with problems that would be faced in combat.

2) "The assault will be accomplished in two phases utilizing the ships of Amphibious Squadron 5, plus the Princeton (LPH-5) and minor support ships. The first phase will be accomplished by a transport unit composed of fast ships, capable of sustaining a formation speed of 21 knots, which will land two battalions of the First Marine Brigade.

In addition, the plan will provide for landing one constructive battalion (note The constructive battalion landed at Red Beach).

The assault forces will be landed by surface craft over Blue and Red Beaches, and by Helicopter in Helicopter Landing Zones Yellow and Orange. Red Beach forces are all constructive.

The second phase involves the support of the initial assault forces by the slower ships of the transport unit and their embarked forces from the 1st Marine Brigade. (note The Calvert would have been a part of this group.)

Air and ground forces will oppose the assault. These forces will have an atomic capability for using small tactical weapons. Clear Ridge forces will possess a similar capability; however, these weapons will not be employed unless the aggressor initiates their use; or, until ordered by the Commander of the Amphibious Task Force."

1) Aggressor Forces Fortify Island, Brigade Will Land, Windward Marine, Vol VIII, No. 38, p4, September 18, 1959

2) Concept Explained, Windward Marine, Vol VIII, No. 38, p4, September 18, 1959

1959 September 20 Kokole Point, Kauai

1) "The 1st Marine Brigade will attack Kauai on Sunday, Sept 20. Main action of the amphibious assault will take place in the Barking Sands area between Kokole Point Lighthouse and the town of Kekaha. From the air, a battalion of helicopter-borne Marine infantrymen will swoop down on the high ground behind the beaches and attempt to dislodge an entrenched 'aggressor' force. Activities at Red Beach will be limited to a 'paper war' with all forces being committed constructively there to add realism to the maneuvers."

2) Landing craft and troops encountered heavy, high-crashing surf and strong undertoe.

1) Barking Sands Assault, Windward Marine, Vol VIII, No. 38, p1, 3, September 18, 1959

2) Brigade Lands, Enemy Flees, Kauai Beaches, Windward Marine, Vol VIII, No. 39, p4, September 15, 1959

1959 September 20 Kokole Point, Kauai

Sources for Operation Clear Ridge, Mid September to Late September, 1959

* Windward Marine, Vol VIII, No. 36, September 4, 1959 - available online at https://static.dvidshub.net/media/pubs/pdf_16877.pdf
Calif. Marines to Oppose Brigade During Clear Ridge, pp1

* Windward Marine, Vol VIII, No. 37, September 4, 1959 - available online at https://static.dvidshub.net/media/pubs/pdf_16878.pdf
TECG Already Busy Planning For Operation Clear Ridge, pp4

* Windward Marine, Vol VIII, No. 38, Septmber 18, 1959 - available online at https://static.dvidshub.net/media/pubs/pdf_16881.pdf
Brigade Departs For Clear Ridge, pp1 (maps of landing areas)
Amphib Landing Concept Explained, pp1, 4
Techniques Are Stressed At Kauai, pp1, 3
Landing Force Embarks On Amphib Group 3 Vessels, p1
Aggressor Forces Fortify Island, Brigade Will Land, p4

* Windward Marine, Vol VIII, No. 39, September 25, 1959 - available online at https://static.dvidshub.net/media/pubs/pdf_16884.pdf
Brigade Lands, Enemy Flees, Kauai Beaches, p4

0000 Anchored as before.

0630 Secured from darkened ship and secured the picket boat.

0800 Set Condition of Readiness 1A; commenced off-loading cargo and troops.

Air Defense Drills

0835 Air Raid Warning RED (Aggressors from North). 0850 Simulated fire; 0853 Cease fire. 0900 Warning WHITE.

0926 Air Raid Warning RED. 0928 Simulated fire. 0931 Warning WHITE.

1117 Air Raid Warning RED. 1123 Simulated fire (overhead). 1126 Warning WHITE.

1137 Secured from Condition 1A; set Condition of Readiness IV.

1225 Set Condition of Readiness 1A; resumed off-loading operations. Air Defense Drills

1349 Air Raid Warning RED. 1353 Simulated fire; 1355 Cease fire. 1357 Warning WHITE.

1532 Air Raid Warning RED. 1534 Simulated fire; 1536 Cease fire. 1542 Warning WHITE.

1540 LCU-1396 made up alongside to starboard. Medical Receipts (from FORT MARION)

1705 LCU-1396 cast off and clear.

1837 Darkened ship (except aircraft lights); stationed picket boat.

1915 Set Anti-Sneak Attack Condition.

2215 Completed off loading troops and cargo.

2330 Secured Anti-Sneak Attack Condition.

1959 September 21 Kokole Point, Kauai

Deck Log, USS Calvert, September 1959

0000 Anchored in anchorage B-19, Kekaha, Kauai, Hawaii. Ship is darkened; on ten minute steaming notice.

0929 Air Raid Warning RED, guns free.

0936 Air Raid Warning WHITE, guns tight.

1030 Air Raid Warning RED, guns free.

1040 LCM-1 returned to ship with ramp casualty; hoisted in.

1057 Air Raid Warning WHITE, guns tight.

1330 Air Raid Warning RED; set Condition of Readiness I.

1353 Air Raid Warning WHITE; set Material Condition ZEBRA.

1959 September 22 Kokole Point, Kauai

1356 Set Material Condition YOKE.

Deck Log, USS Calvert, September 1959

1358 Air Raid Warning RED, guns tight.

1359 Air Raid Warning WHITE, guns tight.

1400 Air Raid Warning RED, guns tight.

1405 Air Raid Warning WHITE, guns tight.

1409 Set Condition of Readiness III.

1437 Air Raid Warning RED, guns tight; set Condition of Readiness I.

1447 Air Raid Warning WHITE, guns tight.

1454 Set Condition of Readiness III.

1603 Air Raid Warning WHITE.

1959	September	22	Kokole Point, Kauai	<p>1836 Darkened ship; set Anti-Sneak Attack Condition. 2050 Sighted boat approximately 1 mile to seaward. 2050 Sent picket boat to investigate and simulate attack. 2050 Picket boat reported that boat contained ten UDT swimmers; conducted simulated attack. 2110 Sighted red flare bearing 350, 750 yards distant. 2115 Sighted second red flare bearing 350, 750 yards distant. 2117 Sighted third red flare bearing 350, 1000 yards distant. 2130 Picket boat intercepted UDT swimmer boat again about 500 yards shoreward from ship; conducted simulated attack. 2335 Secured Anti-Sneak Attack Condition and personnel.</p>	Deck Log, USS Calvert, September 1959
1959	September	23	Kokole Point, Kauai Kekaha Roads, Kauai	<p>0000 Anchored in anchorage B-19, Kekaha, Kauai, Hawaii. 1015 Commenced preparations for getting underway. 1055 Underway per direction of CTG 53.6 to shift anchorages; maneuvering to clear anchorage. 1122 Anchored in Kekaha Roads, Kauai. 1508 Commenced backloading of vehicles and Marine personnel. 1712 Engine ahead 1/3, rudder right full to hold position. 2015 Observed dragging of the anchor. 2015 Center of anchorage bears 110, distance 400 yards. 2015 Veered starboard chain to 150 fathoms at the water's edge. 2311 Collision/Damage While coming alongside, LCU-1614 stove a hole 7 inches in diameter in the skin of the ship. 2311 Damage Location Frame 38, starboard side, 32 feet above the keel and 10 feet above the waterline..</p>	Deck Log, USS Calvert, September 1959
1959	September	24	Kekaha Roads, Kauai Underway for Pearl Harbor Pearl Harbor	<p>0000 Anchored in administrative anchorage, Kekaha, Kauai. Using main and steering engines to hold anchorage. Backloading troops and cargo; completing Operation CLEAR RIDGE. 0120 Completed backloading of troops and cargo. 0718 Commenced preparations for getting underway. 0750 Completed preparations for getting underway. 0753 Underway for Pearl Harbor, Oahu. 1515 Sighted unidentified submerged submarine. Bearing 042.5, distance 3600 yards; Target angle about 070. 1517 Captain notified of unidentified submarine. 1520 Submarine passed abeam to port, distant 2300 yards. Believed speed less than 2 knots. 1530 Submarine position established dead in the water at 21° 16.4' N, 158° 03.1' W. 1530 Position is bearing 215, 5000 yards from Barber's Point Lighthouse. 1531 Submarine determined to be 2.9 miles north of operating area S-2. 1533 Initial contact report sent to OCA. 1557 Commenced investigation of unidentified submarine. 1615 Unidentified contact surfaced; identified as USS HEDGEHOG (SS-460). 1751 Moored port side to Berths M-1 and M-2, U.S. Naval Base, Pearl Harbor. 1830 Commenced off loading troops and combat cargo. 2144 Secured from discharging vehicles from No. 3 Hold. 2245 Secured from discharging vehicles from No. 2 Hold.</p>	Deck Log, USS Calvert, September 1959

1959	September	25 - 27	Pearl Harbor	<p>1) A recreational visit to Pearl Harbor will follow completion of the exercise.</p> <p>2) Sept 25th Received 16,220 gallons fresh water and 71,770 gallons, NSFO.</p> <p>2) Sept 27th 0220 Fire Incident Reported Class "A" fire in compartment B-201-L, Isolation Ward, lower bunk forward. Details Mattress smoldering; fire extinguished. Casualties No personnel casualties. 1315 Commenced loading ship's vehicles. 1500 Secured from loading ship's vehicles.</p>	<p>1) <u>Seaman Joe H. Fountain To Participate In Hawaiian Amphibious Exercises</u>. The Florala News, Florala, Alabama. Sept 9, 1959. P9.</p> <p>2) Deck Log, USS Calvert, September 1959</p>
1959	September	28	Underway for San Diego.	<p>Moored as before.</p> <p>0855 Underway for San Diego, California.</p> <p>1020 Formed column formation; CALVERT (Guide) in Station 1, USS FORT MARION (LSD-22) in Station 2, USS SKAGIT (AKA-105) in Station 3, USS CATAMOUNT (LSD-17) in Station 4, and USS OAK HILL (LSD-7) in Station 5. Formation Data Distance 1000 yards; formation course 144; formation speed 12 knots.</p> <p>1315 Formed Formation 53C; CALVERT is guide in Station 0. Stationing SKAGIT in A-1, FORT MARION in A-2, OAK HILL in A-3, CATAMOUNT in A-4.</p>	Deck Log, USS Calvert, September 1959
1959	September	29 - 30	Underway for San Diego.	Steaming as before, underway for San Diego, column formation. Speed 12 knots.	Deck Log, USS Calvert, September 1959
1959	October	1 - 4	Underway for San Diego.	<p>Oct 1 Mid-day highline exercises and transfer of supplies to the USS Catamount.</p> <p>Oct 2 Early morning highline transfer of supplies with the USS Catamount. Mid-day highline transfer of supplies with the USS Fort Marion. The Calvert experienced a series of steering casualties during the day.</p> <p>Oct 3: 1133 All engines ahead flank (102 RPM). Commenced engineering tests. 1530 Slowed to 16 knots. Engineering tests completed. 2315 Four inches of water reported in compartment C-403-AE. Evaluated as overflow from cofferdam. Commenced pumping.</p>	Deck Log, USS Calvert, October 1959
1959	October	5	Steaming to San Diego San Diego Naval Station	<p>Steaming as before.</p> <p>0210 Visibility decreased to 150 feet due to fog; commenced sounding fog signals and stationed lookouts in the eyes of the ship.</p> <p>0233 Visibility increased to five miles; ceased fog signals. 0801 Went to General Quarters. 0808 Set Material Condition ZEBRA; commenced general drills. 0840 Set Material Condition YOKE. 0847 Completed drills and secured from General Quarters. 2038 Moored port side to Pier "L", U.S. Naval Air Station, San Diego</p>	Deck Log, USS Calvert, October 1959

1959	October	6 - 11	San Diego Naval Station	8th Received 118,036 gallons of NSFO. 9th Changed mooring to Buoys 30 and 31, San Diego Harbor.	Deck Log, USS Calvert, October 1959
1959	October	12	San Diego Naval Station Underway for Long Beach, CA Long Beach, CA	1) 0000 Moored as before, Buoys 30 and 31, San Diego Harbor. 0002 Changed operational control from COMPHIBRON FIVE to COMPHIBRON SEVEN. 0858 Underway for Long Beach, California. 1729 Moored starboard side to Pier 1, Berth 12, U.S. Naval Shipyard, Long Beach. 2) The Calvert was temporarily assigned on 12 October to Commander, Amphibious Squadron Seven, Captain Rolin E. Westholm, USN, as flagship for Phiblex 2-60, Operation Eagle Eye. During the operation, Rear Admiral C.O. Triebel, USN, Commander, Amphibious Group One, flew his flag in the Calvert.	1) Deck Log, USS Calvert, October 1959 2) Cullen, Page 25, 26
1959	October	13	Long Beach, CA	0000 Moored as before. 0800 CAPT Rollin E. WESTHOLM, USN, COMPHIBRON SEVEN, broke his pennant in this vessel. Received 8,587 gallons of fresh water.	Deck Log, USS Calvert, October 1959
1959	October	14	Long Beach, CA Underway for San Diego San Diego Naval Station	0000 Moored as before. 0639 Underway for San Diego, California. 1622 Moored port side to Pier 1, Berth 14, U.S. Naval Station, San Diego.	Deck Log, USS Calvert, October 1959
1959	October	15 - 19	San Diego Naval Station	As before.	Deck Log, USS Calvert, October 1959
1959	October	20	San Diego Naval Station	Commanding Officer, Tactical Air Control Squadron Eleven, reported aboard with 10 officers and 19 enlisted men for duties in connection with Operation Eagle Eye.	Deck Log, USS Calvert, October 1959

				0000 Moored as before.	
				1015 COMPHIBGRU ONE broke his flag in CALVERT.	
1959	October	21	San Diego Naval Station Underway to Camp Pendleton	1110 Underway for Operation Eagle Eye. 1311 Formed Formation 51-G with CALVERT (Guide, Station S-12), USS FORT MARION (LSD-22) (Station S-7), and USS CATAMOUNT (LSD-17) (Station S-6). Formation speed 8 knots. OTC is CTG 53.8, COMPHIBRON SEVEN, in CALVERT. 1430 Exercised at general drills. 1515 Secured from drills. 1545 USS PRINCETON (LPH-5) rendezvoused and took Station S-1. 1645 Commenced steering sinuous course using Cam No. 4. 1717 Observed sunset; darkened ship except for a blue wake light. 1844 Turned on navigational running lights. 1905 Turned off navigational running lights.	Deck Log, USS Calvert, October 1959
1959	October	22	Underway to Camp Pendleton Camp Pendleton	0000 Steaming with TG 53.8 enroute from San Diego to Camp Pendleton for Operation EAGLE EYE. 0048 Detached to proceed independently to anchorage off Camp Pendleton. 0247 Anchored in L-3 off Camp Pendleton, 3200 yards off. 0824 Underway shifting berths 900 yards south to assigned anchorage L-3. 0858 Anchored in L-3 off Camp Pendleton.	Deck Log, USS Calvert, October 1959
1959	October	23	Camp Pendleton	Anchored as before.	Deck Log, USS Calvert, October 1959
1959	October	24	Camp Pendleton Underway off Camp Pendleton	Anchored as before. 1759 Underway. 1830 Formed column with USS Catamount, USS Princeton, and USS Fort Marion. USS Calvert as guide.	Deck Log, USS Calvert, October 1959
1959	October	25	Underway off Camp Pendleton Camp Pendleton	0000 Steaming with units of TG 53.8 in Western Sea Frontier, Southeast Sector, conducting Operation Eagle Eye. In Column Open Order Formation CALVERT (Guide, Station 1), USS CATAMOUNT (LSD-17) (Station 2), USS PRINCETON (LPH-5) (Station 3), and USS FORT MARION (LSD-22) (Station 4). Formation distance 2000 yards; course 090, speed 10 knots. 0331 Ordered to proceed independently. 0642 Anchored in L-3. Camp Pendleton. 0900 Commenced H-Hour, Operation EAGLE EYE.	Deck Log, USS Calvert, October 1959
1959	October	26 - 27	Camp Pendleton	Anchored as before. Engineering plant on 30 minute standby for getting underway.	Deck Log, USS Calvert, October 1959

1959	October	28	Camp Pendleton Underway to San Diego	0000 Anchored as before. 1225 Underway for Long Beach, California. 1623 Anchored in C-8, San Pedro Bay, Long Beach. 1635 COMPHIBRON SEVEN shifted his pennant from CALVERT to the U.S. Naval Base, Long Beach. 2155 Underway for San Diego.	Deck Log, USS Calvert, October 1959
1959	October	29	Underway to San Diego San Diego Naval Station	0000 Steaming independently enroute from Long Beach, California to San Diego, California per COMPHIBPAC Employment Schedule. Speed 10 knots. Changed Operational Control from COMPHIBRON SEVEN to COMPHIBRON THREE. 0859 Moored starboard side to USS PAUL REVERE (APA-248) at Pier 4, U.S. Naval Station, San Diego. 0950 Tactical Air Control Squadron ELEVEN departed and transferred to NAS San Diego. 1100 RADM J. W. COOPER, USN, COMPHIBGRU THREE, shifted flag from PAUL REVERE to CALVERT.	Deck Log, USS Calvert, October 1959
1959	October	30 - 31	San Diego Naval Station	As before.	Deck Log, USS Calvert, October 1959

Temporary Flagship, Amphibious Group Three - October 29 to December 16 1959

- 1) "On 29 October, the Calvert changed operational control from Comphibron Seven to Commander, Amphibious Group Three and then served as the flagship of Rear Admiral Joshua W. Cooper, USN, until 16 December 1959." 1) Cullen, Page 26
- 2) Editor's note During this time as temporary flagship for Amphibious Group Three, the remaining units (minus Calvert) of Amphibious Squadron Five participated in cold weather training near Kodiak, Alaska along with Marines of the Marine Regiment, First Marine Division stationed at Camp Pendleton. 2) San Francisco Chronicle, December 4, 1959

1959	November	1 - 15	San Diego Naval Station	November 1 Pier 4, Berth 41 November 2 Changed berths to Pier 3, Berth 32. November 3 - 11 As before. Engineering plant is in a cold iron status. November 12 0754 Commenced taking on fuel from YO-131. November 13 As before 0833 Lighted fires under No. 1 Boiler. 1245 Commenced spinning main engines. 1255 Completed spinning main engines. November 14, 15 Pier 3, Berth 32	Deck Log, USS Calvert, November 1959
1959	November	16 - 19	San Diego Naval Station Coronado Roads San Diego Bay	For the period November 16 to 19 the Calvert's crew participated in amphibious training exercises along "the Silver Strand" located south of San Diego. Most mornings found the Calvert and crew anchored in San Diego Harbor, with departure for Coronado Roads by mid-morning. Amphibious training exercises took place during the late morning and early afternoon, with the ship returning to San Diego Harbor by late afternoon.	Deck Log, USS Calvert, November 1959

1959	November	16	San Diego Naval Station	0000 Moored, Pier 3, Berth 32. 0800 RADM J.W. Cooper, USN, COMPHBGRU THREE, hauled down his flag and departed on temporary additional duty. 0815 Commenced preparations for getting underway. 0859 Underway for Coronado Roads.	Deck Log, USS Calvert, November 1959
			Coronado Roads	1056 Anchored on right flank, Beach Lane 4, Line of Departure, Coronado Roads, California. 1204 Set Condition of Readiness 1-A.	
			San Diego Bay	1209 Commenced amphibious training exercises. 1449 Completed amphibious training exercises. Secured from Condition of Readiness 1-A. 1500 Commenced making preparations for getting underway. Underway for Anchorage 206, San Diego Harbor. 1651 Anchored, Anchorage 206, San Diego Harbor.	
<hr/>					
1959	November	17 - 19	San Diego Naval Station	November 17 Similar routine as previous day with amphibious exercises at Coronado Roads. The Calvert anchored in San Diego Harbor overnight. November 18 Similar routine as previous day with amphibious exercises at Coronado Roads. The Calvert remained anchored at Coronado Roads overnight.	Deck Log, USS Calvert, November 1959
			Coronado Roads	November 19 0000 Anchored in the right flank of Beach Lane Four, Line of Departure, Coronado Roads. The sea is calm, with visibility 6000 yards, and ground fog.	
			San Diego Bay	0937 Away all boats. 0958 All boats waterborne and running. 1115 Wave 1 crossed LOD. 1121 Wave 2 crossed LOD. 1125 Wave 3 crossed LOD. 1130 Wave 1 touchdown, 1135 Wave 2 touchdown. 1140 Wave 3 touchdown. 1153 Lighted fires under No. 2 boiler. 1300 Completed Amphibious Training Exercise. 1340 Underway for anchorage 204, San Diego Bay.	
<hr/>					
1959	November	20 - 29	San Diego Bay	November 20 San Diego Bay. 0729 Underway for Oparea MM-15. 1603 Fire discovered in the ships store soda fountain. Called away Repair 5 to the scene of the fire. 1607 Fire reported to be an electrical fire. Fire is out. 1627 Moored port side to pier 3, berth 32, US Naval Station, San Diego.	Deck Log, USS Calvert, November 1959
			U.S. Naval Station, San Diego	November 21 Moored port side to pier 3, berth 32, US Naval Station, San Diego. The engineering plant is in cold iron status. November 22 Moored port side to pier 3, berth 32, US Naval Station, San Diego. Ship is in a cold iron status. 0335 Fire reported in compartment B-201-L. Investigation revealed mattress fire. 0338 Fire extinguished.	
				November 23 to 29 Moored port side to pier 3, berth 32, US Naval Station, San Diego. The engineering plant is in cold iron status. November 26 Thanksgiving Day.	

1959	November	30	U.S. Naval Station, San Diego Coronado Roads, California	1030 Underway for Op-areas SS-2 and 5. 1600 Conducint Submarine Target Exercise. 1817 Anchored in Anchorage 147, Coronado Roads. 1835 Let fires die out under No. 1 boiler.	Deck Log, USS Calvert, November 1959
1959	December	1-3	San Diego area	<p>December 1 Anchored in Anchorage 147, Coronado Roads, California. 0330 Lighted fires under No. 1 Boiler. 0349 Paralleled No. 3 Generator.</p> <p>0430 Set the special sea and anchor detail. 0459 Underway for sea to conduct submarine target exercises. 0600 commenced zig-zagging, commenced scheduled submarine target vessel exercises. 0846 Stopped all engines due to loss of lube oil. 0848 Engineering casualty restored; Commenced maneuvering at various speeds. 1601 Secured from submarine target exercise. 1754 Anchored in anchorage 206, San Diego Bay, California. 1800 Set the regular in-port watch. Let fires die out under No. 1 boiler.</p> <p>December 2 0000 Anchored as before. 0445 Lighted fires under No. 1 boiler. 0617 Underway for sea.0810 Commenced exercises as submarine target vessel. 1535 Completed submarine target exercises, set speed 15 knots. 1657 Anchored in anchorage 206, San Diego Bay, San Diego.</p> <p>December 3 Anchored as before. 0600 Lighted fires under No. 2 Boiler. 0753 Underway for sea. 1131 Steaming into position with target sled for firing exercise. 1227 Commenced firing exercise; following ammunition expended 36 rounds 3"/50 caliber AA; 13 rounds 5"/38 caliber powder. 1335 Performing various engineering casualty drills. 1728 Anchored in anchorage 204, San Diego Bay, San Diego.</p>	Deck Log, USS Calvert, December 1959
1959	December	4-10	San Diego area	<p>December 4 Anchored in anchorage 204, San Diego, California. 0000 visibility decreased to 100 yards. Commenced sounding for signals on the ship's bell. 0240 Visibility increased to 3 miles. Secured from sounding fog signals. 0719 Underway for sea. 1640 Anchorage 206, San Diego Bay.</p> <p>December 5 - 6 Anchored as before.</p> <p>December 7 Anchored as before. 1001 Underway for OpArea MM18. 1655 Anchored in anchorag 300, San Diego Bay.</p> <p>December 8 Anchored as before. 0759 Underway for sea.1433 Anchored in anchorage 300, San Diego Bay.</p> <p>December 9 Anchored as before. 0936 Underway for sea. 1022 Anchored on Right Flank Beach Lane Two, LOD, in Coronado Roads, San Diego. 1206 Away all designated boats. 1224 All designated boats waterborne. 1430 Commenced hoisting all boats. 1530 All boats aboard. 1559 Underway for anchorage 300, San Diego Bay. 1633 Anchored in Anchorage 300.</p> <p>December 10 Anchored as before. 0749 Underway for sea. 1150 Made rendezvous with USS Tawasa (ATF-92) and took station to conduct surface firing exercises. Ammunition expended 30 rounds 3"/50 BL&T and 23 rounds 5"/38 BL&T. 1633 Moored port side to, Pier India, U.S. Naval Air Station.</p> <p>December 11 Anchored as before. 1337 Underway shifting berths. 1427 Moored port side to South Side, Navy Pier, San Diego.</p>	Deck Log, USS Calvert, December 1959

				Ship's Open House	
1959	December	12 - 13	Navy Pier, San Diego	<p>December 12 Moored as before. 1300 Commenced General Ship Visit for residents of San Diego. 1600 Secured from General Ship Visits. No incidents. Foggy morning, then clear/haze conditions remainder of the day and fog again in the evening.</p> <p>December 13 Moored as before. 0935 Set Gale Condition One, Measure Delta. Redoubled number six line, taking two additional parts to the pier. 1230 Doubled up the after mooring wire. 1300 Commenced Ship Visit. 1400 Wind velocity 32 knots. 1600 Completed Ship Viist. No Incidents. 1900 Winds abating, velocity 18 knots. 2200 Winds normal, 2 knots.</p>	Deck Log, USS Calvert, December 1959
				Dependents' Cruise	
1959	December	14	Navy Pier, San Diego Coronado Roads San Diego Naval Station	<p>0000 Moored as before.</p> <p>0924 Underway for dependents cruise. 85 embarked dependents embarked. 1106 Commenced amphibious demonstration. 1150 Completed amphibious demonstration. Commenced hoisting boats.</p> <p>1551 Moored port side to, outboard USS Estes (AGC-12) at Pier INDIA, U.S. Naval Air Statio, North Island, San Diego. 1620 Completed dependent cruise. Debarked all dependents.</p>	Deck Log, USS Calvert, December 1959
1959	December	15-31	San Diego Naval Station	<p>December 15 Moored as before. 0001 The Commanding Officer departed on five days annual leave.</p> <p>December 16-20 Moored as before.</p> <p>December 21 Moored as before. 0730 The Commanding Officer returned from 5 days leave.</p> <p>December 22-28 Moored as before.</p> <p>December 28 On 28 December, 1959, the Calvert was awarded the Amphibious Assault Insignia for excellence in competitive exercises conducted during the previous month. At the same time Mount 51 added a hashmark to its "E".</p> <p>December 29 Moored as before. 0953 Underway to change berths. 1027 Moored starboard side to North Navy Pier, San Diego.</p> <p>December 30 Moored as before.</p> <p>December 31 Moored as before. 1302 Underway to shift berths to head of pier. 1308 Moored starboard side to North Navy Pier, San Diego.</p>	Deck Log, USS Calvert, December 1959 2) Cullen, Page 26

End of research notes for the period January 1, 1959 to December 31, 1959.